

Histone H3K18ac (Acetyl Lys18) antibody

Cat. No. GTX128943

| | |
|--------------|--|
| Host | Rabbit |
| Clonality | Polyclonal |
| Isotype | IgG |
| Applications | WB, ICC/IF, IHC-P, IP, Dot, ChIP assay |
| Reactivity | Human, Mouse, Rat |

References (1)

Package

100 µl, 25 µl

Applications

Application Note

*Optimal dilutions/concentrations should be determined by the researcher.

| Suggested dilution | Recommended dilution |
|--------------------|----------------------|
| WB | 1:1000-1:10000 |
| ICC/IF | 1:100-1:1000 |
| IHC-P | 1:100-1:1000 |
| IP | 1:100-1:500 |
| Dot | Assay dependent |
| ChIP assay | Assay dependent |

Not tested in other applications.

Properties

| | |
|---------------|--|
| Form | Liquid |
| Buffer | PBS, 1% BSA, 20% Glycerol |
| Preservative | 0.025% ProClin 300 |
| Storage | Store as concentrated solution. Centrifuge briefly prior to opening vial. For short-term storage (1-2 weeks), store at 4°C. For long-term storage, aliquot and store at -20°C or below. Avoid multiple freeze-thaw cycles. |
| Concentration | 0.26 mg/ml (Please refer to the vial label for the specific concentration.) |
| Immunogen | Carrier-protein conjugated synthetic peptide surrounding acetyl Lys18 of human Histone H3. The exact sequence is proprietary. |
| Purification | Purified by antigen-affinity chromatography. |
| Conjugation | Unconjugated |



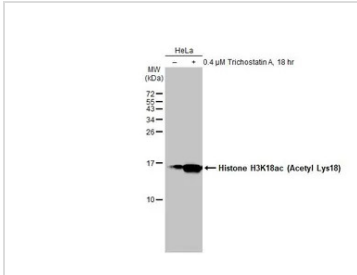
For full product information, images and publications, please visit our [website](#).

Date 2025 / 09 / 14 Page 1 of 2

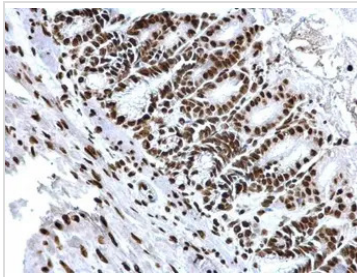
For laboratory research use only. Not for any clinical, therapeutic, or diagnostic use in humans or animals. Not for animal or human consumption.

Note

Purchasers shall not, and agree not to enable third parties to, analyze, copy, reverse engineer or otherwise attempt to determine the structure or sequence of the product.

DATA IMAGES

GTx128943 WB Image

Untreated (–) and treated (+) HeLa whole cell extracts (30 μg) were separated by 15% SDS-PAGE, and the membrane was blotted with Histone H3K18ac (Acetyl Lys18) antibody (GTx128943) diluted at 1:5000. The HRP-conjugated anti-rabbit IgG antibody (GTx213110-01) was used to detect the primary antibody.

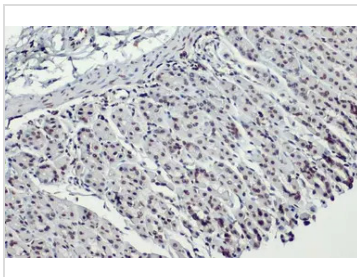

GTx128943 IHC-P Image

Histone H3K18ac (acetyl Lys18) antibody detects Histone H3K18ac (acetyl Lys18) protein at nucleus on mouse prostate by immunohistochemical analysis.

Sample: Paraffin-embedded mouse prostate.

Histone H3K18ac (acetyl Lys18) antibody (GTx128943) dilution: 1:500.

Antigen Retrieval: Trilogy™ (EDTA based, pH 8.0) buffer, 15min

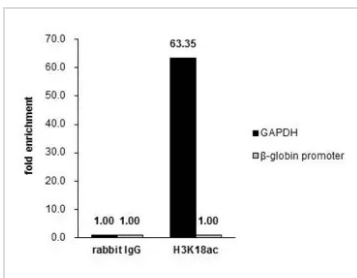

GTx128943 IHC-P Image

Histone H3K18ac (Acetyl Lys18) antibody detects Histone H3K18ac protein at nucleus by immunohistochemical analysis.

Sample: Paraffin-embedded mouse stomach.

Histone H3K18ac stained by Histone H3K18ac (Acetyl Lys18) antibody (GTx128943) diluted at 1:500.

Antigen Retrieval: Citrate buffer, pH 6.0, 15 min


GTx128943 ChIP assay Image

Cross-linked ChIP was performed with HeLa chromatin extract treated with Trichostatin A (0.4 μM for 18 h) and 5 μg of either control rabbit IgG or anti-Histone H3K18ac (acetyl Lys18) antibody. The precipitated DNA was detected by PCR with primer set targeting to GAPDH or β-globin promoter.



For full product information, images and publications, please visit our [website](https://www.genetex.com).