

## Histone H3K18ac (Acetyl Lys18) antibody

**Cat. No. GTX128943**

<b>Host</b>	Rabbit
<b>Clonality</b>	Polyclonal
<b>Isotype</b>	IgG
<b>Applications</b>	WB, ICC/IF, IHC-P, IP, Dot, ChIP assay
<b>Reactivity</b>	Human, Mouse, Rat

References ( 1 )

Package

100 µl, 25 µl

## Applications

**Application Note**

\*Optimal dilutions/concentrations should be determined by the researcher.

Suggested dilution	Recommended dilution
WB	1:1000-1:10000
ICC/IF	1:100-1:1000
IHC-P	1:100-1:1000
IP	1:100-1:500
Dot	Assay dependent
ChIP assay	Assay dependent

Not tested in other applications.

## Properties

<b>Form</b>	Liquid
<b>Buffer</b>	PBS, 1% BSA, 20% Glycerol
<b>Preservative</b>	0.025% ProClin 300
<b>Storage</b>	Store as concentrated solution. Centrifuge briefly prior to opening vial. For short-term storage (1-2 weeks), store at 4°C. For long-term storage, aliquot and store at -20°C or below. Avoid multiple freeze-thaw cycles.
<b>Concentration</b>	0.26 mg/ml (Please refer to the vial label for the specific concentration.)
<b>Immunogen</b>	Carrier-protein conjugated synthetic peptide surrounding acetyl Lys18 of human Histone H3. The exact sequence is proprietary.
<b>Purification</b>	Purified by antigen-affinity chromatography.
<b>Conjugation</b>	Unconjugated

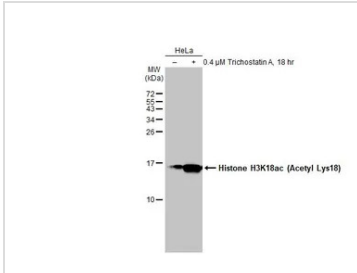


For full product information, images and publications, please visit our [website](#).

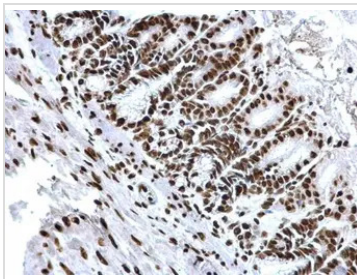
For laboratory research use only. Not for any clinical, therapeutic, or diagnostic use in humans or animals. Not for animal or human consumption.

**Note**

Purchasers shall not, and agree not to enable third parties to, analyze, copy, reverse engineer or otherwise attempt to determine the structure or sequence of the product.

**DATA IMAGES**

**GTx128943 WB Image**

Untreated (–) and treated (+) HeLa whole cell extracts (30 μg) were separated by 15% SDS-PAGE, and the membrane was blotted with Histone H3K18ac (Acetyl Lys18) antibody (GTx128943) diluted at 1:5000. The HRP-conjugated anti-rabbit IgG antibody (GTx213110-01) was used to detect the primary antibody.

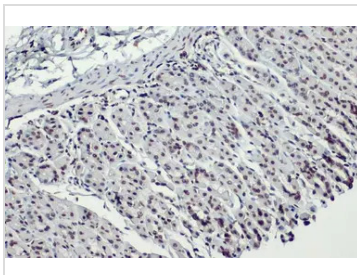

**GTx128943 IHC-P Image**

Histone H3K18ac (acetyl Lys18) antibody detects Histone H3K18ac (acetyl Lys18) protein at nucleus on mouse prostate by immunohistochemical analysis.

Sample: Paraffin-embedded mouse prostate.

Histone H3K18ac (acetyl Lys18) antibody (GTx128943) dilution: 1:500.

Antigen Retrieval: Trilogy™ (EDTA based, pH 8.0) buffer, 15min

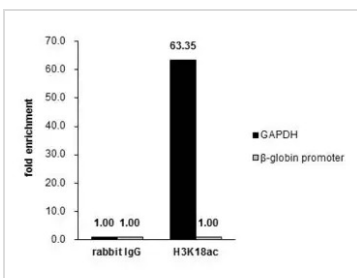

**GTx128943 IHC-P Image**

Histone H3K18ac (Acetyl Lys18) antibody detects Histone H3K18ac protein at nucleus by immunohistochemical analysis.

Sample: Paraffin-embedded mouse stomach.

Histone H3K18ac stained by Histone H3K18ac (Acetyl Lys18) antibody (GTx128943) diluted at 1:500.

Antigen Retrieval: Citrate buffer, pH 6.0, 15 min


**GTx128943 ChIP assay Image**

Cross-linked ChIP was performed with HeLa chromatin extract treated with Trichostatin A (0.4 μM for 18 h) and 5 μg of either control rabbit IgG or anti-Histone H3K18ac (acetyl Lys18) antibody. The precipitated DNA was detected by PCR with primer set targeting to GAPDH or β-globin promoter.



For full product information, images and publications, please visit our [website](https://www.genetex.com).