

## Histone H3K27ac (Acetyl Lys27) antibody

Cat. No. GTX128944

Host	Rabbit
Clonality	Polyclonal
Isotype	IgG
Applications	WB, ICC/IF, IHC-P, IP, Dot, ChIP assay, EM
Reactivity	Human, Mouse, Rat

References ( 13 )

★★★★☆ Review ( 1 )

Package

100 µl, 25 µl

## Applications

## Application Note

\*Optimal dilutions/concentrations should be determined by the researcher.

Suggested dilution	Recommended dilution
WB	1:1000-1:10000
ICC/IF	1:100-1:1000
IHC-P	1:100-1:1000
IP	1:100-1:5000
Dot	Assay dependent
ChIP assay	Assay dependent
EM	Assay dependent

Not tested in other applications.

## Properties

Form	Liquid
Buffer	PBS, 1% BSA, 20% Glycerol
Preservative	0.025% ProClin 300
Storage	Store as concentrated solution. Centrifuge briefly prior to opening vial. For short-term storage (1-2 weeks), store at 4°C. For long-term storage, aliquot and store at -20°C or below. Avoid multiple freeze-thaw cycles.
Concentration	0.53 mg/ml (Please refer to the vial label for the specific concentration.)
Immunogen	Carrier-protein conjugated synthetic peptide surrounding acetyl Lys27 of human Histone H3. The exact sequence is proprietary.
Purification	Purified by antigen-affinity chromatography.
Conjugation	Unconjugated

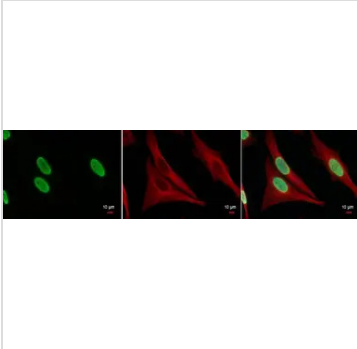
For full product information, images and publications, please visit our [website](#).

For laboratory research use only. Not for any clinical, therapeutic, or diagnostic use in humans or animals. Not for animal or human consumption.

## Note

Purchasers shall not, and agree not to enable third parties to, analyze, copy, reverse engineer or otherwise attempt to determine the structure or sequence of the product.

## DATA IMAGES



### GTX128944 ICC/IF Image

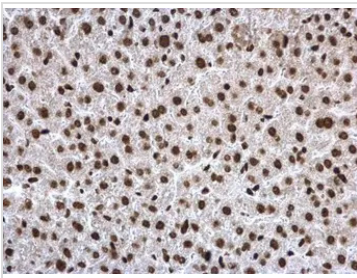
Histone H3 (acetyl Lys27) antibody detects Histone H3 (acetyl Lys27) protein at nucleus by immunofluorescent analysis.

Sample: HeLa cells were fixed in 4% paraformaldehyde at RT for 15 min.

Green: Histone H3 (acetyl Lys27) protein stained by Histone H3 (acetyl Lys27) antibody (GTX128944) diluted at 1:500.

Red: alpha Tubulin antibody [GT114], a cytoskeleton marker, stained by GTX628802 diluted at 1:500.

Blue: Hoechst 33342 staining.



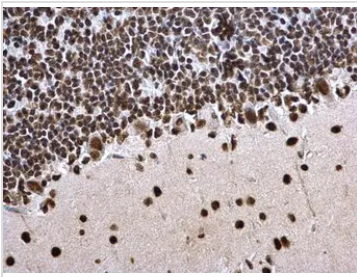
### GTX128944 IHC-P Image

Histone H3K27ac (acetyl Lys27) antibody detects Histone H3K27ac (acetyl Lys27) protein at nucleus on mouse liver by immunohistochemical analysis.

Sample: Paraffin-embedded mouse liver.

Histone H3K27ac (acetyl Lys27) antibody (GTX128944) dilution: 1:500.

Antigen Retrieval: Trilogy™ (EDTA based, pH 8.0) buffer, 15min



### GTX128944 IHC-P Image

Histone H3K27ac (acetyl Lys27) antibody detects Histone H3K27ac (acetyl Lys27) protein at nucleus on rat hind brain by immunohistochemical analysis.

Sample: Paraffin-embedded rat hind brain.

Histone H3K27ac (acetyl Lys27) antibody (GTX128944) dilution: 1:500.

Antigen Retrieval: Trilogy™ (EDTA based, pH 8.0) buffer, 15min



For full product information, images and publications, please visit our [website](https://www.genetex.com).