

Histone H3S28ph (phospho Ser28) antibody

Cat. No. GTX128953

Host	Rabbit
Clonality	Polyclonal
Isotype	IgG
Application	WB, ICC/IF, IHC-P, Dot
Reactivity	Human

Reference (1)
 Package
 100 µl, 25 µl

APPLICATION

Application Note

*Optimal dilutions/concentrations should be determined by the researcher.

Suggested dilution	Recommended dilution
WB	1:500-1:3000
ICC/IF	1:100-1:1000
IHC-P	1:100-1:1000
Dot	Assay dependent

Not tested in other applications.

PROPERTIES

Form	Liquid
Buffer	PBS, 1% BSA, 20% Glycerol
Preservative	0.01% Thimerosal
Storage	Store as concentrated solution. Centrifuge briefly prior to opening vial. For short-term storage (1-2 weeks), store at 4°C. For long-term storage, aliquot and store at -20°C or below. Avoid multiple freeze-thaw cycles.
Concentration	1 mg/ml (Please refer to the vial label for the specific concentration.)
Immunogen	Carrier-protein conjugated synthetic peptide surrounding phospho Ser28 of human Histone H3. The exact sequence is proprietary.
Purification	Purified by antigen-affinity chromatography.
Conjugation	Unconjugated

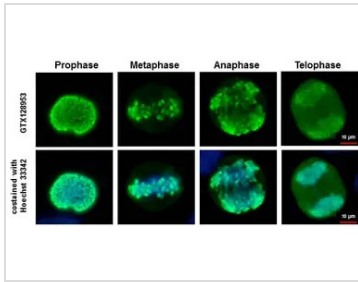
Note

For laboratory research use only. Not for any clinical, therapeutic, or diagnostic use in humans or animals. Not for animal or human consumption.

Purchasers shall not, and agree not to enable third parties to, analyze, copy, reverse engineer or otherwise attempt to determine the structure or sequence of the product.



For full product information, images and publications, please visit our [website](#).

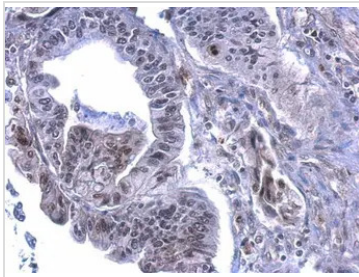
DATA IMAGES

GTX128953 ICC/IF Image

Histone H3 (phospho Ser28) antibody detects Histone H3 (phospho Ser28) protein at chromosome in asynchronous HeLa cells.

Sample: HeLa cells were fixed in 2% paraformaldehyde for 30 min.

Green: Histone H3 (phospho Ser28) protein stained by Histone H3 (phospho Ser28) antibody (GTX128953) diluted at 1:500.

Blue: Hoechst 33342 staining.

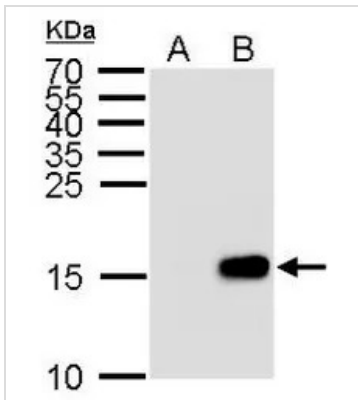

GTX128953 IHC-P Image

Histone H3 (phospho Ser28) antibody detects Histone H3 (phospho Ser28) protein at nucleus on human gastric cancer by immunohistochemical analysis.

Sample: Paraffin-embedded gastric cancer.

Histone H3 (phospho Ser28) antibody (GTX128953) dilution: 1:500.

Antigen Retrieval: Trilogy™ (EDTA based, pH 8.0) buffer, 15min


GTX128953 WB Image

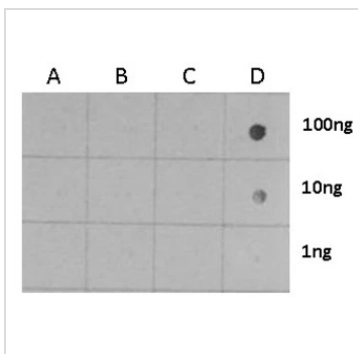
Histone H3 (phospho S28) antibody detects Histone H3 (phospho S28) protein by Western blot analysis.

A. 30 µg HeLa whole cell lysate/extract (untreated)

B. 30 µg HeLa whole cell lysate/extract (100 ng/ml Nocodazole treatment for 24 hr)

15 % SDS-PAGE

Histone H3 (phospho S28) antibody (GTX128953) dilution: 1:1000


GTX128953 Dot Image

Dotblot analysis of anti-Histone H3 (phospho Ser28) antibody with peptide samples.

Varied amount of peptide samples were spotted onto positively charged nylon membrane and blotted with Histone H3 (phospho Ser28) antibody (GTX128953) 1:5000 dilution.

A: Peptide samples of H3S10 un

B: Peptide samples of H3S10ph

C: Peptide samples of H3S28 un

D: Peptide samples of H3S28ph



For full product information, images and publications, please visit our [website](https://www.genetex.com).