

# Histone H3K4me3 (Tri-methyl Lys4) antibody

**Cat. No. GTX128954**

<b>Host</b>	Rabbit
<b>Clonality</b>	Polyclonal
<b>Isotype</b>	IgG
<b>Applications</b>	WB, ICC/IF, IHC-P, IHC-Fr, IHC-Wm, Dot, ChIP assay, EM
<b>Reactivity</b>	Human, Mouse, Rat, Zebrafish, Drosophila

References ( 10 )

★★★★☆ Review ( 2 )

Package

100 µl, 25 µl

## Applications

### Application Note

\*Optimal dilutions/concentrations should be determined by the researcher.

Suggested dilution	Recommended dilution
WB	1:500-1:3000
ICC/IF	1:100-1:1000
IHC-P	1:100-1:1000
IHC-Fr	Assay dependent
IHC-Wm	1:100-1:500
Dot	Assay dependent
ChIP assay	Assay dependent
EM	Assay dependent

Not tested in other applications.

## Properties

<b>Form</b>	Liquid
<b>Buffer</b>	PBS, 1% BSA, 20% Glycerol
<b>Preservative</b>	0.025% ProClin 300
<b>Storage</b>	Store as concentrated solution. Centrifuge briefly prior to opening vial. For short-term storage (1-2 weeks), store at 4°C. For long-term storage, aliquot and store at -20°C or below. Avoid multiple freeze-thaw cycles.
<b>Concentration</b>	0.12 mg/ml (Please refer to the vial label for the specific concentration.)
<b>Immunogen</b>	Carrier-protein conjugated synthetic peptide surrounding tri-methyl Lys4 of human Histone H3. The exact sequence is proprietary.
<b>Purification</b>	Purified by antigen-affinity chromatography.
<b>Conjugation</b>	Unconjugated



For full product information, images and publications, please visit our [website](#).

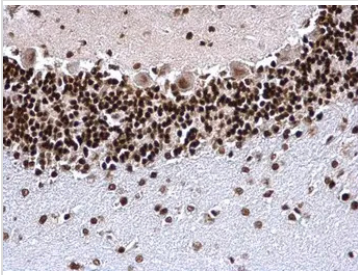
Date 2025 / 06 / 30 Page 1 of 2

For laboratory research use only. Not for any clinical, therapeutic, or diagnostic use in humans or animals. Not for animal or human consumption.

## Note

Purchasers shall not, and agree not to enable third parties to, analyze, copy, reverse engineer or otherwise attempt to determine the structure or sequence of the product.

## DATA IMAGES



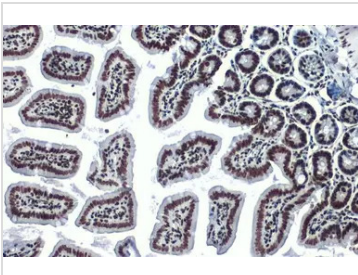
### GTx128954 IHC-P Image

Histone H3K4me3 (trimethyl Lys4) antibody detects Histone H3K4me3 (trimethyl Lys4) protein at nucleus on rat fore brain by immunohistochemical analysis.

Sample: Paraffin-embedded rat fore brain.

Histone H3K4me3 (trimethyl Lys4) antibody (GTx128954) dilution: 1:500.

Antigen Retrieval: Trilogy™ (EDTA based, pH 8.0) buffer, 15min



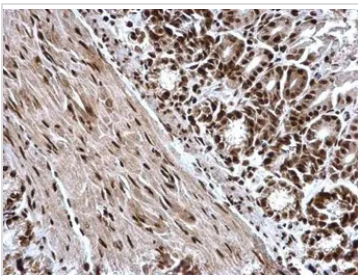
### GTx128954 IHC-P Image

Histone H3K4me3 (Tri-methyl Lys4) antibody detects Histone H3K4me3 (Tri-methyl Lys4) protein at nucleus by immunohistochemical analysis.

Sample: Paraffin-embedded mouse intestine.

Histone H3K4me3 (Tri-methyl Lys4) stained by Histone H3K4me3 (Tri-methyl Lys4) antibody (GTx128954) diluted at 1:500.

Antigen Retrieval: Citrate buffer, pH 6.0, 15 min



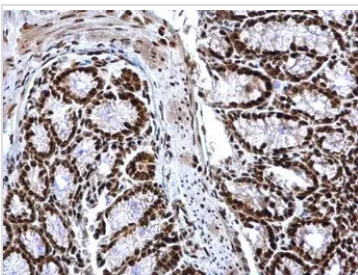
### GTx128954 IHC-P Image

Histone H3K4me3 (trimethyl Lys4) antibody detects Histone H3K4me3 (trimethyl Lys4) protein at nucleus on mouse duodenum by immunohistochemical analysis.

Sample: Paraffin-embedded mouse duodenum.

Histone H3K4me3 (trimethyl Lys4) antibody (GTx128954) dilution: 1:500.

Antigen Retrieval: Trilogy™ (EDTA based, pH 8.0) buffer, 15min



### GTx128954 IHC-P Image

Histone H3K4me3 (trimethyl Lys4) antibody detects Histone H3K4me3 (trimethyl Lys4) protein at nucleus on mouse colon by immunohistochemical analysis.

Sample: Paraffin-embedded mouse colon.

Histone H3K4me3 (trimethyl Lys4) antibody (GTx128954) dilution: 1:500.

Antigen Retrieval: Trilogy™ (EDTA based, pH 8.0) buffer, 15min



For full product information, images and publications, please visit our [website](https://www.genetex.com).