

Histone H3K4me3 (Tri-methyl Lys4) antibody

Cat. No. GTX128954

Host	Rabbit
Clonality	Polyclonal
Isotype	IgG
Applications	WB, ICC/IF, IHC-P, IHC-Fr, IHC-Wm, Dot, ChIP assay, EM
Reactivity	Human, Mouse, Rat, Zebrafish, Drosophila

References (10)

★★★★☆ Review (2)

Package

100 µl, 25 µl

Applications

Application Note

*Optimal dilutions/concentrations should be determined by the researcher.

Suggested dilution	Recommended dilution
WB	1:500-1:3000
ICC/IF	1:100-1:1000
IHC-P	1:100-1:1000
IHC-Fr	Assay dependent
IHC-Wm	1:100-1:500
Dot	Assay dependent
ChIP assay	Assay dependent
EM	Assay dependent

Not tested in other applications.

Properties

Form	Liquid
Buffer	PBS, 1% BSA, 20% Glycerol
Preservative	0.025% ProClin 300
Storage	Store as concentrated solution. Centrifuge briefly prior to opening vial. For short-term storage (1-2 weeks), store at 4°C. For long-term storage, aliquot and store at -20°C or below. Avoid multiple freeze-thaw cycles.
Concentration	0.12 mg/ml (Please refer to the vial label for the specific concentration.)
Immunogen	Carrier-protein conjugated synthetic peptide surrounding tri-methyl Lys4 of human Histone H3. The exact sequence is proprietary.
Purification	Purified by antigen-affinity chromatography.
Conjugation	Unconjugated



For full product information, images and publications, please visit our [website](#).

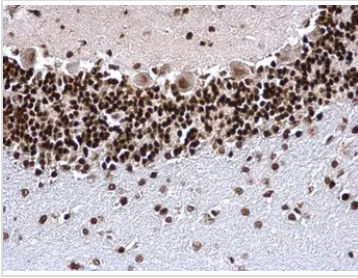
Date 2025 / 07 / 17 Page 1 of 2

For laboratory research use only. Not for any clinical, therapeutic, or diagnostic use in humans or animals. Not for animal or human consumption.

Note

Purchasers shall not, and agree not to enable third parties to, analyze, copy, reverse engineer or otherwise attempt to determine the structure or sequence of the product.

DATA IMAGES



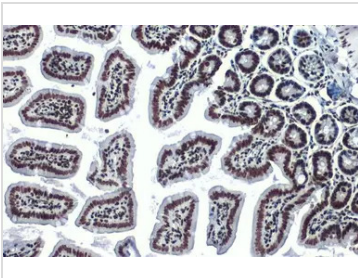
GTX128954 IHC-P Image

Histone H3K4me3 (trimethyl Lys4) antibody detects Histone H3K4me3 (trimethyl Lys4) protein at nucleus on rat fore brain by immunohistochemical analysis.

Sample: Paraffin-embedded rat fore brain.

Histone H3K4me3 (trimethyl Lys4) antibody (GTX128954) dilution: 1:500.

Antigen Retrieval: Trilogy™ (EDTA based, pH 8.0) buffer, 15min



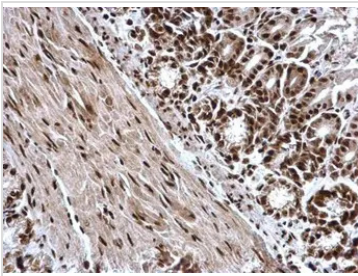
GTX128954 IHC-P Image

Histone H3K4me3 (Tri-methyl Lys4) antibody detects Histone H3K4me3 (Tri-methyl Lys4) protein at nucleus by immunohistochemical analysis.

Sample: Paraffin-embedded mouse intestine.

Histone H3K4me3 (Tri-methyl Lys4) stained by Histone H3K4me3 (Tri-methyl Lys4) antibody (GTX128954) diluted at 1:500.

Antigen Retrieval: Citrate buffer, pH 6.0, 15 min



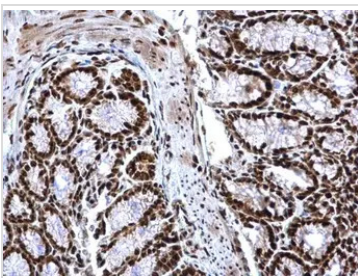
GTX128954 IHC-P Image

Histone H3K4me3 (trimethyl Lys4) antibody detects Histone H3K4me3 (trimethyl Lys4) protein at nucleus on mouse duodenum by immunohistochemical analysis.

Sample: Paraffin-embedded mouse duodenum.

Histone H3K4me3 (trimethyl Lys4) antibody (GTX128954) dilution: 1:500.

Antigen Retrieval: Trilogy™ (EDTA based, pH 8.0) buffer, 15min



GTX128954 IHC-P Image

Histone H3K4me3 (trimethyl Lys4) antibody detects Histone H3K4me3 (trimethyl Lys4) protein at nucleus on mouse colon by immunohistochemical analysis.

Sample: Paraffin-embedded mouse colon.

Histone H3K4me3 (trimethyl Lys4) antibody (GTX128954) dilution: 1:500.

Antigen Retrieval: Trilogy™ (EDTA based, pH 8.0) buffer, 15min



For full product information, images and publications, please visit our [website](https://www.genetex.com).