

Histone H4K8ac (acetyl Lys8) antibody

Cat. No. GTX128957

Host	Rabbit
Clonality	Polyclonal
Isotype	IgG
Applications	WB, ICC/IF, IHC-P, IP, Dot, ChIP assay, IHC (Free Floating)
Reactivity	Human, Mouse, Rat

References (1)

★★★★★ Review (1)

Package

100 µl, 25 µl

Applications

Application Note

*Optimal dilutions/concentrations should be determined by the researcher.

Suggested dilution	Recommended dilution
WB	1:1000-1:10000
ICC/IF	1:100-1:1000
IHC-P	1:100-1:1000
IP	1:100-1:5000
Dot	Assay dependent
ChIP assay	Assay dependent
IHC (Free Floating)	Assay dependent

Not tested in other applications.

Properties

Form	Liquid
Buffer	PBS, 1% BSA, 20% Glycerol
Preservative	0.01% Thimerosal
Storage	Store as concentrated solution. Centrifuge briefly prior to opening vial. For short-term storage (1-2 weeks), store at 4°C. For long-term storage, aliquot and store at -20°C or below. Avoid multiple freeze-thaw cycles.
Concentration	1 mg/ml (Please refer to the vial label for the specific concentration.)
Immunogen	Carrier-protein conjugated synthetic peptide surrounding acetyl Lys8 of human Histone H4. The exact sequence is proprietary.
Purification	Purified by antigen-affinity chromatography.
Conjugation	Unconjugated

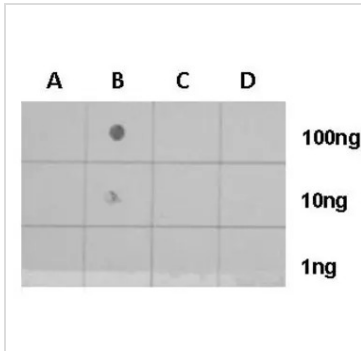


For full product information, images and publications, please visit our [website](#).

For laboratory research use only. Not for any clinical, therapeutic, or diagnostic use in humans or animals. Not for animal or human consumption.

Note

Purchasers shall not, and agree not to enable third parties to, analyze, copy, reverse engineer or otherwise attempt to determine the structure or sequence of the product.

DATA IMAGES

GTX128957 Dot Image

Dotblot analysis of anti-Histone H4 (acetyl Lys9) antibody with peptide samples.

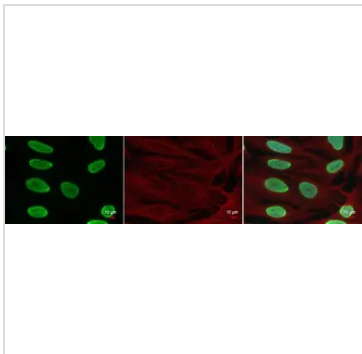
Varied amount of peptide samples were spotted onto positively charged nylon membrane and blotted with Histone H4 (acetyl Lys9) antibody (GTX128957) 1:5000 dilution.

A: Peptide samples of H4K8 un

B: Peptide samples of H4K8ac

C: Peptide samples of H4K16un

D: Peptide samples of H4K16ac


GTX128957 ICC/IF Image

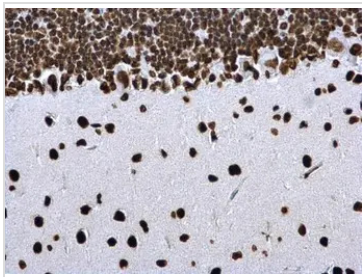
Histone H4 (acetyl Lys8) antibody detects Histone H4 (acetyl Lys8) protein at nucleus by immunofluorescent analysis.

Sample: HeLa cells were fixed in 4% paraformaldehyde at RT for 15 min.

Green: Histone H4 (acetyl Lys8) protein stained by Histone H4 (acetyl Lys8) antibody (GTX128957) diluted at 1:500.

Red: alpha Tubulin antibody [GT114], a cytoskeleton marker, stained by GTX628802 diluted at 1:500.

Blue: Hoechst 33342 staining.

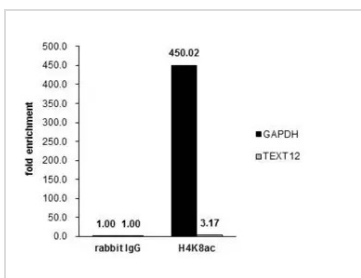

GTX128957 IHC-P Image

Histone H4K8ac (acetyl Lys8) antibody detects Histone H4K8ac (acetyl Lys8) protein at nucleus on rat hind brain by immunohistochemical analysis.

Sample: Paraffin-embedded rat hind brain.

Histone H4K8ac (acetyl Lys8) antibody (GTX128957) dilution: 1:500.

Antigen Retrieval: Trilogy™ (EDTA based, pH 8.0) buffer, 15min


GTX128957 ChIP assay Image

Cross-linked ChIP was performed with HeLa chromatin extract treated with Trichostatin A (0.4 μ M for 18 h) and 5 μ g of either control rabbit IgG or anti-Histone H4K8ac (acetyl Lys8) antibody. The precipitated DNA was detected by PCR with primer set targeting to GAPDH or TEXT12.



For full product information, images and publications, please visit our [website](https://www.genetex.com).