

## Histone H4K20me1 (monomethyl Lys20) antibody

**Cat. No. GTX128959**

<b>Host</b>	Rabbit
<b>Clonality</b>	Polyclonal
<b>Isotype</b>	IgG
<b>Applications</b>	WB, ICC/IF, Dot
<b>Reactivity</b>	Human, Mouse

References ( 1 )

Package

100 µl, 25 µl

## Applications

**Application Note**

\*Optimal dilutions/concentrations should be determined by the researcher.

Suggested dilution	Recommended dilution
WB	1:500-1:3000
ICC/IF	1:100-1:1000
Dot	1:500

Not tested in other applications.

## Properties

<b>Form</b>	Liquid
<b>Buffer</b>	PBS, 1% BSA, 20% Glycerol
<b>Preservative</b>	0.01% Thimerosal
<b>Storage</b>	Store as concentrated solution. Centrifuge briefly prior to opening vial. For short-term storage (1-2 weeks), store at 4°C. For long-term storage, aliquot and store at -20°C or below. Avoid multiple freeze-thaw cycles.
<b>Concentration</b>	1 mg/ml (Please refer to the vial label for the specific concentration.)
<b>Immunogen</b>	Carrier-protein conjugated synthetic peptide surrounding mono-methyl Lys20 of human Histone H4. The exact sequence is proprietary.
<b>Purification</b>	Purified by antigen-affinity chromatography.
<b>Conjugation</b>	Unconjugated

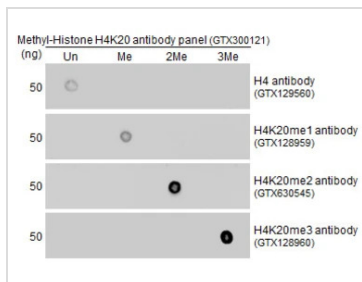
**Note**

For laboratory research use only. Not for any clinical, therapeutic, or diagnostic use in humans or animals. Not for animal or human consumption.

Purchasers shall not, and agree not to enable third parties to, analyze, copy, reverse engineer or otherwise attempt to determine the structure or sequence of the product.

For full product information, images and publications, please visit our [website](#).

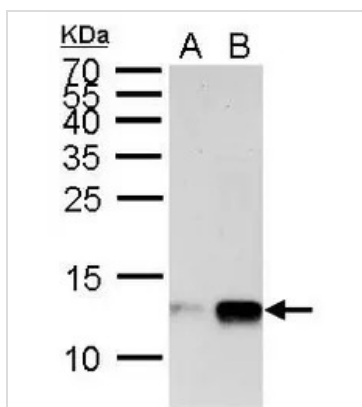
DATA IMAGES



**GTX128959 Dot Image**

Dot blot analysis of various of H4K20 methylation peptides using Histone H4K20me1 (monomethyl Lys20) antibody (GTX128959) at antibody dilution of 1:500.

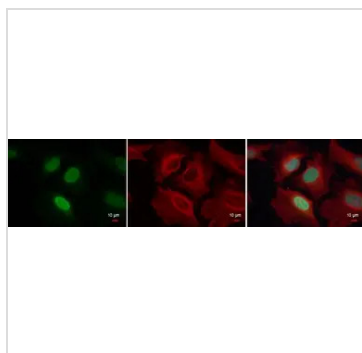
Un : H4 protein peptide  
Me : H4K20 mono-methyl peptide  
2Me : H4K20 di-methyl peptide  
3Me : H4K20 Tri-methyl peptide



**GTX128959 WB Image**

Histone H4 (mono methyl Lys20) antibody detects Histone H4 (mono methyl Lys20) protein by Western blot analysis.

A. 30 µg HeLa whole cell lysate/extract  
B. 30 µg HeLa nuclear lysate/extract  
15 % SDS-PAGE  
Histone H4 (mono methyl Lys20) antibody (GTX128959) dilution: 1:1000



**GTX128959 ICC/IF Image**

Histone H4 (mono methyl Lys20) antibody detects Histone H4 (mono methyl Lys20) protein at nucleus by immunofluorescent analysis.

Sample: HeLa cells were fixed in 4% paraformaldehyde at RT for 15 min.  
Green: Histone H4 (mono methyl Lys20) protein stained by Histone H4 (mono methyl Lys20) antibody (GTX128959) diluted at 1:500.  
Red: alpha Tubulin antibody [GT114], a cytoskeleton marker, stained by GTX628802 diluted at 1:500.  
Blue: Hoechst 33342 staining.



For full product information, images and publications, please visit our [website](#).