

Histone H4K20me3 (trimethyl Lys20) antibody

Cat. No. GTX128960

| | |
|---------------------|------------------------|
| Host | Rabbit |
| Clonality | Polyclonal |
| Isotype | IgG |
| Applications | WB, ICC/IF, IHC-P, Dot |
| Reactivity | Human, Mouse, Rat |

★★★★★ Review (1)

Package
100 µl, 25 µl

Applications

Application Note

*Optimal dilutions/concentrations should be determined by the researcher.

| Suggested dilution | Recommended dilution |
|--------------------|----------------------|
| WB | 1:500-1:3000 |
| ICC/IF | 1:100-1:1000 |
| IHC-P | 1:100-1:1000 |
| Dot | 1:500 |

Not tested in other applications.

Properties

| | |
|----------------------|--|
| Form | Liquid |
| Buffer | PBS, 1% BSA, 20% Glycerol |
| Preservative | 0.01% Thimerosal |
| Storage | Store as concentrated solution. Centrifuge briefly prior to opening vial. For short-term storage (1-2 weeks), store at 4°C. For long-term storage, aliquot and store at -20°C or below. Avoid multiple freeze-thaw cycles. |
| Concentration | 1 mg/ml (Please refer to the vial label for the specific concentration.) |
| Immunogen | Carrier-protein conjugated synthetic peptide surrounding tri-methyl Lys20 of human Histone H4. The exact sequence is proprietary. |
| Purification | Purified by antigen-affinity chromatography. |
| Conjugation | Unconjugated |

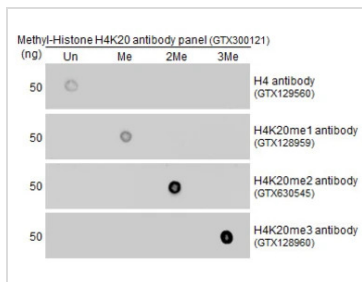
Note

For laboratory research use only. Not for any clinical, therapeutic, or diagnostic use in humans or animals. Not for animal or human consumption.

Purchasers shall not, and agree not to enable third parties to, analyze, copy, reverse engineer or otherwise attempt to determine the structure or sequence of the product.



For full product information, images and publications, please visit our [website](#).

DATA IMAGES

GTx128960 Dot Image

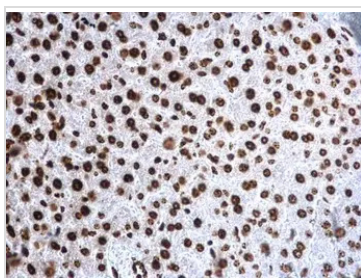
Dot blot analysis of various of H4K20 methylation peptides using Histone H4K20me3 (trimethyl Lys20) antibody (GTx128960) at antibody dilution of 1:500.

Un : H4 protein peptide

Me : H4K20 mono-methyl peptide

2Me : H4K20 di-methyl peptide

3Me : H4K20 Tri-methyl peptide

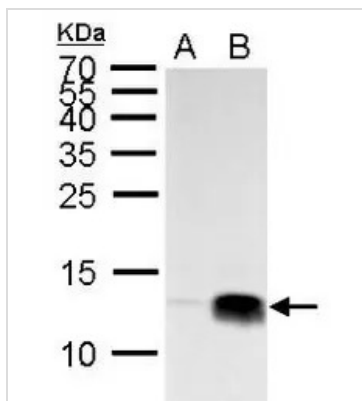

GTx128960 IHC-P Image

Histone H4K20me3 (trimethyl Lys20) antibody detects Histone H4K20me3 (trimethyl Lys20) protein at nucleus on mouse liver by immunohistochemical analysis.

Sample: Paraffin-embedded mouse liver.

Histone H4K20me3 (trimethyl Lys20) antibody (GTx128960) dilution: 1:500.

Antigen Retrieval: Trilogy™ (EDTA based, pH 8.0) buffer, 15min


GTx128960 WB Image

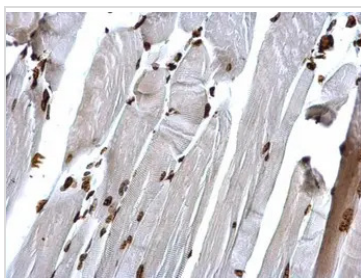
Histone H4 (tri methyl Lys20) antibody detects Histone H4 (tri methyl Lys20) protein by Western blot analysis.

A. 30 µg HeLa whole cell lysate/extract

B. 30 µg HeLa nuclear lysate/extract

15 % SDS-PAGE

Histone H4 (tri methyl Lys20) antibody (GTx128960) dilution: 1:2000


GTx128960 IHC-P Image

Histone H4K20me3 (trimethyl Lys20) antibody detects Histone H4K20me3 (trimethyl Lys20) protein at nucleus on mouse muscle by immunohistochemical analysis.

Sample: Paraffin-embedded mouse muscle.

Histone H4K20me3 (trimethyl Lys20) antibody (GTx128960) dilution: 1:500.

Antigen Retrieval: Trilogy™ (EDTA based, pH 8.0) buffer, 15min



For full product information, images and publications, please visit our [website](https://www.genetex.com).