

## Histone H4K20me3 (trimethyl Lys20) antibody

**Cat. No. GTX128960**

<b>Host</b>	Rabbit
<b>Clonality</b>	Polyclonal
<b>Isotype</b>	IgG
<b>Applications</b>	WB, ICC/IF, IHC-P, Dot
<b>Reactivity</b>	Human, Mouse, Rat

★★★★★ Review ( 1 )

**Package**  
100 µl, 25 µl

## Applications

**Application Note**

\*Optimal dilutions/concentrations should be determined by the researcher.

Suggested dilution	Recommended dilution
WB	1:500-1:3000
ICC/IF	1:100-1:1000
IHC-P	1:100-1:1000
Dot	1:500

Not tested in other applications.

## Properties

<b>Form</b>	Liquid
<b>Buffer</b>	PBS, 1% BSA, 20% Glycerol
<b>Preservative</b>	0.01% Thimerosal
<b>Storage</b>	Store as concentrated solution. Centrifuge briefly prior to opening vial. For short-term storage (1-2 weeks), store at 4°C. For long-term storage, aliquot and store at -20°C or below. Avoid multiple freeze-thaw cycles.
<b>Concentration</b>	1 mg/ml (Please refer to the vial label for the specific concentration.)
<b>Immunogen</b>	Carrier-protein conjugated synthetic peptide surrounding tri-methyl Lys20 of human Histone H4. The exact sequence is proprietary.
<b>Purification</b>	Purified by antigen-affinity chromatography.
<b>Conjugation</b>	Unconjugated

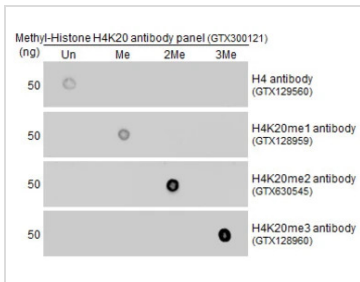
**Note**

For laboratory research use only. Not for any clinical, therapeutic, or diagnostic use in humans or animals. Not for animal or human consumption.

Purchasers shall not, and agree not to enable third parties to, analyze, copy, reverse engineer or otherwise attempt to determine the structure or sequence of the product.



For full product information, images and publications, please visit our [website](#).

**DATA IMAGES**

**GTX128960 Dot Image**

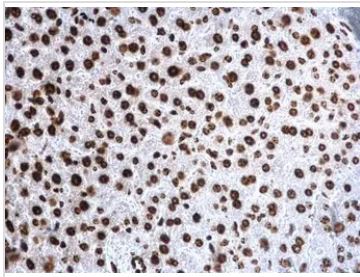
Dot blot analysis of various of H4K20 methylation peptides using Histone H4K20me3 (trimethyl Lys20) antibody (GTX128960) at antibody dilution of 1:500.

Un : H4 protein peptide

Me : H4K20 mono-methyl peptide

2Me : H4K20 di-methyl peptide

3Me : H4K20 Tri-methyl peptide

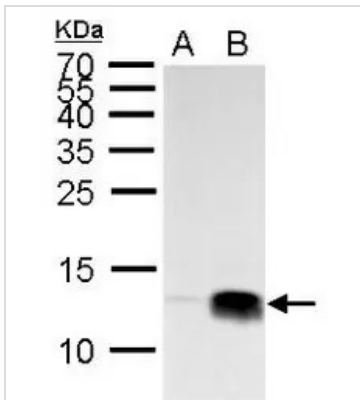

**GTX128960 IHC-P Image**

Histone H4K20me3 (trimethyl Lys20) antibody detects Histone H4K20me3 (trimethyl Lys20) protein at nucleus on mouse liver by immunohistochemical analysis.

Sample: Paraffin-embedded mouse liver.

Histone H4K20me3 (trimethyl Lys20) antibody (GTX128960) dilution: 1:500.

Antigen Retrieval: Trilogy™ (EDTA based, pH 8.0) buffer, 15min


**GTX128960 WB Image**

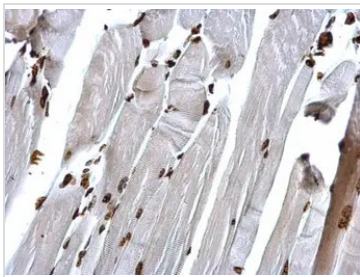
Histone H4 (tri methyl Lys20) antibody detects Histone H4 (tri methyl Lys20) protein by Western blot analysis.

A. 30 µg HeLa whole cell lysate/extract

B. 30 µg HeLa nuclear lysate/extract

15 % SDS-PAGE

Histone H4 (tri methyl Lys20) antibody (GTX128960) dilution: 1:2000


**GTX128960 IHC-P Image**

Histone H4K20me3 (trimethyl Lys20) antibody detects Histone H4K20me3 (trimethyl Lys20) protein at nucleus on mouse muscle by immunohistochemical analysis.

Sample: Paraffin-embedded mouse muscle.

Histone H4K20me3 (trimethyl Lys20) antibody (GTX128960) dilution: 1:500.

Antigen Retrieval: Trilogy™ (EDTA based, pH 8.0) buffer, 15min



For full product information, images and publications, please visit our [website](http://www.genetex.com).