

Histone H2AK5ac (acetyl Lys5) antibody

Cat. No. GTX128961

Host	Rabbit
Clonality	Polyclonal
Isotype	IgG
Applications	WB, ICC/IF, IP, Dot
Reactivity	Human

Package
100 µl, 25 µl

Applications

Application Note

*Optimal dilutions/concentrations should be determined by the researcher.

Suggested dilution	Recommended dilution
WB	1:1000-1:20000
ICC/IF	1:100-1:1000
IP	1:100-1:10000
Dot	Assay dependent

Not tested in other applications.

Properties

Form	Liquid
Buffer	PBS, 1% BSA, 20% Glycerol
Preservative	0.01% Thimerosal
Storage	Store as concentrated solution. Centrifuge briefly prior to opening vial. For short-term storage (1-2 weeks), store at 4°C. For long-term storage, aliquot and store at -20°C or below. Avoid multiple freeze-thaw cycles.
Concentration	1 mg/ml (Please refer to the vial label for the specific concentration.)
Immunogen	Carrier-protein conjugated synthetic peptide surrounding acetyl Lys5 of human Histone H2A. The exact sequence is proprietary.
Purification	Purified by antigen-affinity chromatography.
Conjugation	Unconjugated

Note

For laboratory research use only. Not for any clinical, therapeutic, or diagnostic use in humans or animals. Not for animal or human consumption.

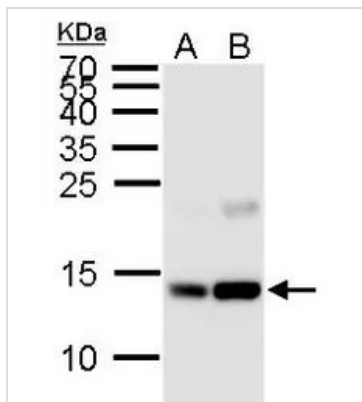
Purchasers shall not, and agree not to enable third parties to, analyze, copy, reverse engineer or otherwise attempt to determine the structure or sequence of the product.



For full product information, images and publications, please visit our [website](#).

Date 2026 / 02 / 01 Page 1 of 2

DATA IMAGES



GTX128961 WB Image

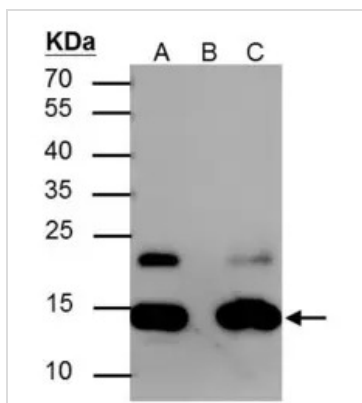
Histone H2AK5ac (acetyl Lys5) antibody detects Histone H2AK5ac (acetyl Lys5) protein by Western blot analysis.

A. 30 μ g HeLa whole cell lysate/extract (0.012% DMSO treatment for 18 hr)

B. 30 μ g HeLa whole cell lysate/extract (0.4 μ M Trichostatin A treatment for 18 hr)

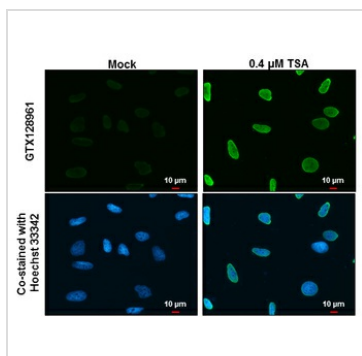
15 % SDS-PAGE

Histone H2AK5ac (acetyl Lys5) antibody (GTX128961) dilution: 1:10000



GTX128961 IP Image

Histone H2AK5ac (acetyl Lys5) antibody immunoprecipitates Histone H2AK5ac (acetyl Lys5) protein in IP experiments. IP Sample: HeLa whole cell lysate/extract A : 30 μ g whole cell lysate/extract of Histone H2AK5ac (acetyl Lys5) protein expressing HeLa cells (0.4 μ M TSA treatment for 18hr) B : Control with 2.5 μ g of pre-immune rabbit IgG C : Immunoprecipitation of Histone H2AK5ac (acetyl Lys5) protein by 2.5 μ g of Histone H2AK5ac (acetyl Lys5) antibody (GTX128961) 12% SDS-PAGE The immunoprecipitated Histone H2AK5ac (acetyl Lys5) protein was detected by Histone H2AK5ac (acetyl Lys5) antibody (GTX128961) diluted at 1 : 10000. EasyBlot anti-rabbit IgG (HRP) (GTX221666-01) was used as a secondary reagent.



GTX128961 ICC/IF Image

Histone H2AK5ac (acetyl Lys5) antibody detects Histone H2AK5ac (acetyl Lys5) protein at nucleus by immunofluorescent analysis.

Samples: HeLa cells mock (left) and treated with 0.4 μ M TSA for 18 hrs (right) were fixed in 4% paraformaldehyde at RT for 15 min.

Green: Histone H2AK5ac (acetyl Lys5) protein stained by Histone H2AK5ac (acetyl Lys5) antibody (GTX128961) diluted at 1:500.

Blue: Hoechst 33342 staining.

Scale bar = 10 μ m.



For full product information, images and publications, please visit our [website](https://www.genetex.com).