

Histone H2BK20ac (acetyl Lys20) antibody

Cat. No. GTX128962

Host	Rabbit
Clonality	Polyclonal
Isotype	IgG
Applications	WB, ICC/IF, IP, Dot
Reactivity	Human

Package
100 µl, 25 µl

Applications

Application Note

*Optimal dilutions/concentrations should be determined by the researcher.

Suggested dilution	Recommended dilution
WB	1:1000-1:10000
ICC/IF	1:100-1:1000
IP	1:100-1:5000
Dot	Assay dependent

Not tested in other applications.

Properties

Form	Liquid
Buffer	PBS, 1% BSA, 20% Glycerol
Preservative	0.01% Thimerosal
Storage	Store as concentrated solution. Centrifuge briefly prior to opening vial. For short-term storage (1-2 weeks), store at 4°C. For long-term storage, aliquot and store at -20°C or below. Avoid multiple freeze-thaw cycles.
Concentration	1 mg/ml (Please refer to the vial label for the specific concentration.)
Immunogen	Carrier-protein conjugated synthetic peptide surrounding acetyl Lys20 of human Histone H2B. The exact sequence is proprietary.
Purification	Purified by antigen-affinity chromatography.
Conjugation	Unconjugated

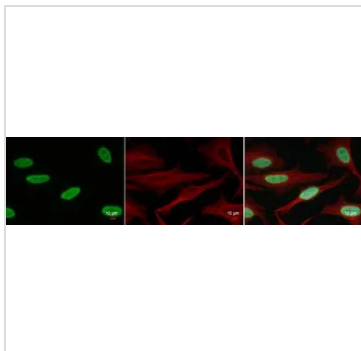
Note

For laboratory research use only. Not for any clinical, therapeutic, or diagnostic use in humans or animals. Not for animal or human consumption.

Purchasers shall not, and agree not to enable third parties to, analyze, copy, reverse engineer or otherwise attempt to determine the structure or sequence of the product.



For full product information, images and publications, please visit our [website](#).

DATA IMAGES

GTx128962 ICC/IF Image

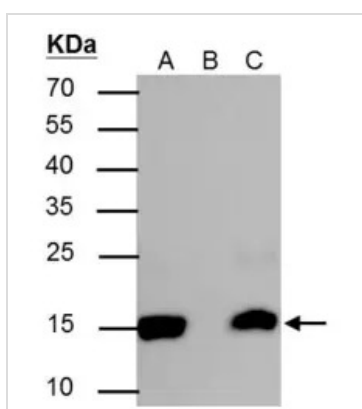
Histone H2BK20ac (acetyl Lys20) antibody detects Histone H2BK20ac (acetyl Lys20) protein at nucleus by immunofluorescent analysis.

Sample: 0.4M TSA-treated for 18hr HeLa cells were fixed in 4% paraformaldehyde at RT for 15 min.

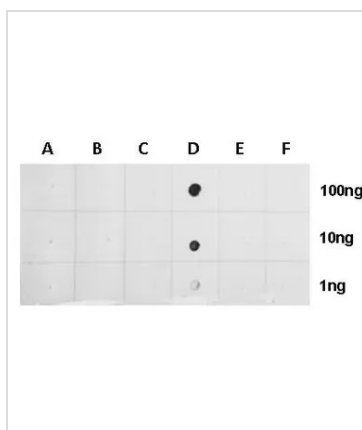
Green: Histone H2BK20ac (acetyl Lys20) protein stained by Histone H2BK20ac (acetyl Lys20) antibody (GTx128962) diluted at 1:500.

Red: alpha Tubulin antibody [GT114], a cytoskeleton marker, stained by GTx628802 diluted at 1:500.

Blue: Hoechst 33342 staining.


GTx128962 IP Image

Histone H2BK20ac (acetyl Lys20) antibody immunoprecipitates Histone H2BK20ac (acetyl Lys20) protein in IP experiments. IP Sample: HeLa whole cell lysate/extract A : 30 μ g whole cell lysate/extract of Histone H2BK20ac (acetyl Lys20) protein expressing HeLa cells (0.4uM TSA treatment for 18hr) B : Control with 2.5 μ g of pre-immune rabbit IgG C : Immunoprecipitation of Histone H2BK20ac (acetyl Lys20) protein by 2.5 μ g of Histone H2BK20ac (acetyl Lys20) antibody (GTx128962) 12% SDS-PAGE The immunoprecipitated Histone H2BK20ac (acetyl Lys20) protein was detected by Histone H2BK20ac (acetyl Lys20) antibody (GTx128962) diluted at 1 : 5000. EasyBlot anti-rabbit IgG (HRP) (GTx221666-01) was used as a secondary reagent.


GTx128962 Dot Image

Dotblot analysis of anti-Histone H2BK20ac (acetyl Lys20) antibody with peptide samples.

Varied amount of peptide samples were spotted onto positively charged nylon membrane and blotted with Histone H2BK20ac (acetyl Lys20) antibody (GTx128962) 1:5000 dilution.

A: Peptide samples of H2A.2K5 un

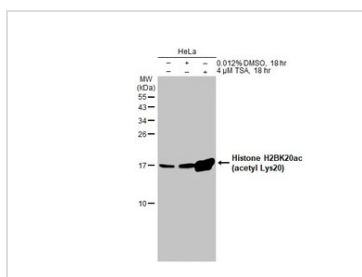
B: Peptide samples of H2A.2K5ac

C: Peptide samples of H2BK20 un

D: Peptide samples of H2BK20ac

E: Peptide samples of H2BK5 un

F: Peptide samples of H2BK5ac


GTx128962 WB Image

Untreated (-) and treated (+) HeLa whole cell extract (30 μ g) were separated by 15% SDS-PAGE, and the membrane was blotted with Histone H2BK20ac (acetyl Lys20) antibody (GTx128962) diluted at 1:5000. The HRP-conjugated anti-rabbit IgG antibody (GTx213110-01) was used to detect the primary antibody.



For full product information, images and publications, please visit our [website](http://www.genetex.com).