

Histone H2BK5ac (acetyl Lys5) antibody

Cat. No. GTX128963

Host	Rabbit
Clonality	Polyclonal
Isotype	IgG
Applications	WB, ICC/IF, Dot
Reactivity	Human

References (1)

Package

100 µl, 25 µl

Applications

Application Note

*Optimal dilutions/concentrations should be determined by the researcher.

Suggested dilution	Recommended dilution
WB	1:500-1:3000
ICC/IF	1:100-1:1000
Dot	Assay dependent

Not tested in other applications.

Properties

Form	Liquid
Buffer	PBS, 1% BSA, 20% Glycerol
Preservative	0.01% Thimerosal
Storage	Store as concentrated solution. Centrifuge briefly prior to opening vial. For short-term storage (1-2 weeks), store at 4°C. For long-term storage, aliquot and store at -20°C or below. Avoid multiple freeze-thaw cycles.
Concentration	1 mg/ml (Please refer to the vial label for the specific concentration.)
Immunogen	Carrier-protein conjugated synthetic peptide surrounding acetyl Lys5 of human Histone H2B. The exact sequence is proprietary.
Purification	Purified by antigen-affinity chromatography.
Conjugation	Unconjugated

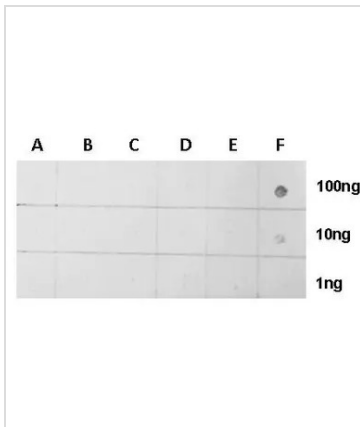
Note

For laboratory research use only. Not for any clinical, therapeutic, or diagnostic use in humans or animals. Not for animal or human consumption.

Purchasers shall not, and agree not to enable third parties to, analyze, copy, reverse engineer or otherwise attempt to determine the structure or sequence of the product.

For full product information, images and publications, please visit our [website](#).

DATA IMAGES

**GTX128963 Dot Image**

Dotblot analysis of anti-Histone H2BK5ac (acetyl Lys5) antibody with peptide samples.

Varied amount of peptide samples were spotted onto positively charged nylon membrane and blotted with Histone H2BK5ac (acetyl Lys5) antibody (GTX128963) 1:5000 dilution.

A: Peptide samples of H2A.2K5 un

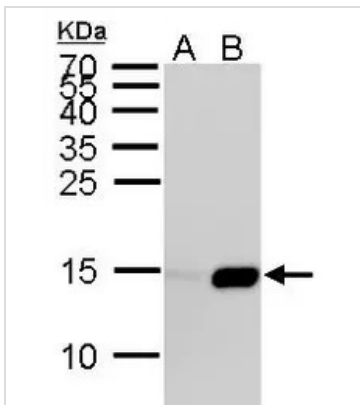
B: Peptide samples of H2A.2K5ac

C: Peptide samples of H2BK20 un

D: Peptide samples of H2BK20ac

E: Peptide samples of H2BK5 un

F: Peptide samples of H2BK5ac

**GTX128963 WB Image**

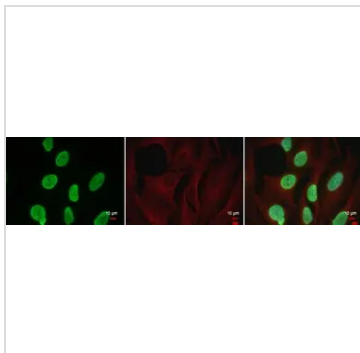
Histone H2BK5ac (acetyl Lys5) antibody detects Histone H2BK5ac (acetyl Lys5) protein by Western blot analysis.

A. 30 μ g HeLa whole cell lysate/extract (0.012% DMSO treatment for 18 hr)

B. 30 μ g HeLa whole cell lysate/extract (0.4 μ M Trichostatin A treatment for 18 hr)

15 % SDS-PAGE

Histone H2BK5ac (acetyl Lys5) antibody (GTX128963) dilution: 1:1000

**GTX128963 ICC/IF Image**

Histone H2BK5ac (acetyl Lys5) antibody detects Histone H2BK5ac (acetyl Lys5) protein at nucleus by immunofluorescent analysis.

Sample: 0.4M TSA-treated for 18hr HeLa cells were fixed in 4% paraformaldehyde at RT for 15 min.

Green: Histone H2BK5ac (acetyl Lys5) protein stained by Histone H2BK5ac (acetyl Lys5) antibody (GTX128963) diluted at 1:500.

Red: alpha Tubulin antibody [GT114], a cytoskeleton marker, stained by GTX628802 diluted at 1:500.

Blue: Hoechst 33342 staining.



For full product information, images and publications, please visit our [website](#).