

IGFBP1 antibody

Cat. No. GTX129006

Host	Rabbit
Clonality	Polyclonal
Isotype	IgG
Applications	WB, ICC/IF, IP
Reactivity	Human

References (2)

Package

100 µl, 25 µl

Applications

Application Note

*Optimal dilutions/concentrations should be determined by the researcher.

Suggested dilution	Recommended dilution
WB	1:500-1:3000
ICC/IF	1:100-1:1000
IP	1:100-1:500

Not tested in other applications.

Calculated MW 28 kDa. ([Note](#))

Properties

Form	Liquid
Buffer	PBS, 20% Glycerol
Preservative	0.025% ProClin 300
Storage	Store as concentrated solution. Centrifuge briefly prior to opening vial. For short-term storage (1-2 weeks), store at 4°C. For long-term storage, aliquot and store at -20°C or below. Avoid multiple freeze-thaw cycles.
Concentration	1 mg/ml (Please refer to the vial label for the specific concentration.)
Immunogen	Recombinant protein encompassing a sequence within the center region of human IGFBP1. The exact sequence is proprietary.
Purification	Purified by antigen-affinity chromatography.
Conjugation	Unconjugated

Note

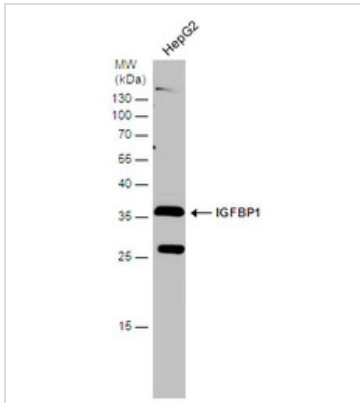
For laboratory research use only. Not for any clinical, therapeutic, or diagnostic use in humans or animals. Not for animal or human consumption.

Purchasers shall not, and agree not to enable third parties to, analyze, copy, reverse engineer or otherwise attempt to determine the structure or sequence of the product.



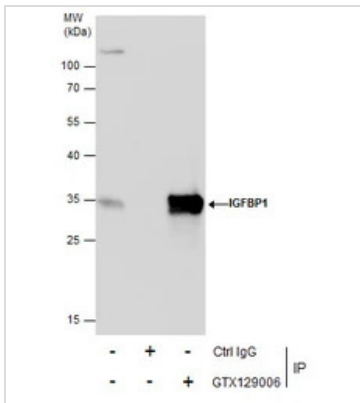
For full product information, images and publications, please visit our [website](#).

DATA IMAGES



GTX129006 WB Image

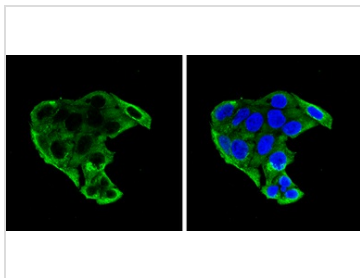
Whole cell extract (30 µg) was separated by 12% SDS-PAGE, and the membrane was blotted with IGFBP1 antibody (GTX129006) diluted at 1:1000.



GTX129006 IP Image

Immunoprecipitation of IGFBP1 protein from HepG2 whole cell extracts using 5 µg of IGFBP1 antibody (GTX129006).

Western blot analysis was performed using IGFBP1 antibody (GTX129006). EasyBlot anti-Rabbit IgG (GTX221666-01) was used as a secondary reagent.



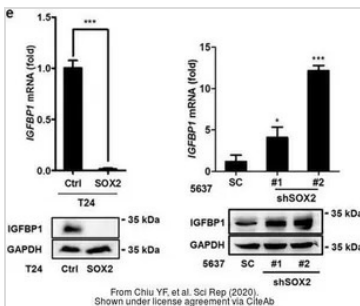
GTX129006 ICC/IF Image

IGFBP1 antibody detects IGFBP1 protein at cytoplasm and Golgi apparatus by immunofluorescent analysis.

Sample: HepG2 cells were fixed in 4% paraformaldehyde at RT for 15 min.

Green: IGFBP1 stained by IGFBP1 antibody (GTX129006) diluted at 1:500.

Blue: Hoechst 33342 staining.



GTX129006 WB Image

The data was published in the journal Sci Rep in 2020. [PMID: 32427884](https://pubmed.ncbi.nlm.nih.gov/32427884/)



For full product information, images and publications, please visit our [website](https://www.genetex.com).