

JARID2 antibody

Cat. No. GTX129019

Host	Rabbit
Clonality	Polyclonal
Isotype	IgG
Application	WB, IHC-P
Reactivity	Human, Mouse

Reference (1)
 Package
 100 µl, 25 µl

APPLICATION

Application Note

*Optimal dilutions/concentrations should be determined by the researcher.

Suggested dilution	Recommended dilution
WB	1:500-1:20000
IHC-P	1:100-1:1000

Not tested in other applications.

Calculated MW 139 kDa. ([Note](#))

PROPERTIES

Form	Liquid
Buffer	PBS, 20% Glycerol
Preservative	0.01% Thimerosal
Storage	Store as concentrated solution. Centrifuge briefly prior to opening vial. For short-term storage (1-2 weeks), store at 4°C. For long-term storage, aliquot and store at -20°C or below. Avoid multiple freeze-thaw cycles.
Concentration	1 mg/ml (Please refer to the vial label for the specific concentration.)
Immunogen	Recombinant protein encompassing a sequence within the N-terminus region of human JARID2. The exact sequence is proprietary.
Purification	Purified by antigen-affinity chromatography.
Conjugation	Unconjugated

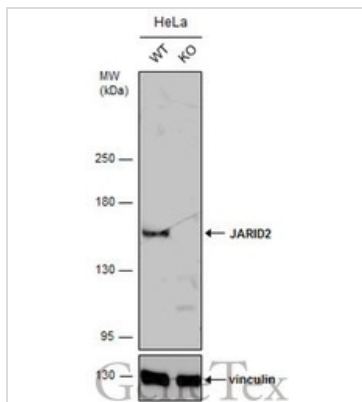
Note

For laboratory research use only. Not for any clinical, therapeutic, or diagnostic use in humans or animals. Not for animal or human consumption.

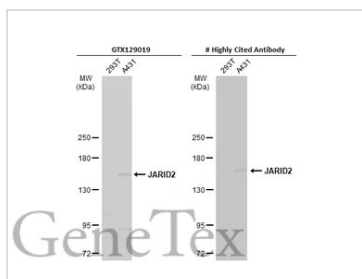
Purchasers shall not, and agree not to enable third parties to, analyze, copy, reverse engineer or otherwise attempt to determine the structure or sequence of the product.



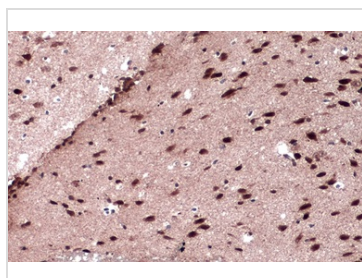
For full product information, images and publications, please visit our [website](#).

DATA IMAGES

GTX129019 WB Image

Wild-type (WT) and JARID2 knockout (KO) HeLa cell extracts (30 μ g) were separated by 5% SDS-PAGE, and the membrane was blotted with JARID2 antibody (GTX129019) diluted at 1:500. The HRP-conjugated anti-rabbit IgG antibody (GTX213110-01) was used to detect the primary antibody, and the signal was developed with Trident ECL plus-Enhanced.


GTX129019 WB Image

Various whole cell extracts (30 μ g) were separated by 5% SDS-PAGE, and the membrane was blotted with JARID2 antibody (GTX129019) diluted at 1:500. The HRP-conjugated anti-rabbit IgG antibody (GTX213110-01) was used to detect the primary antibody.

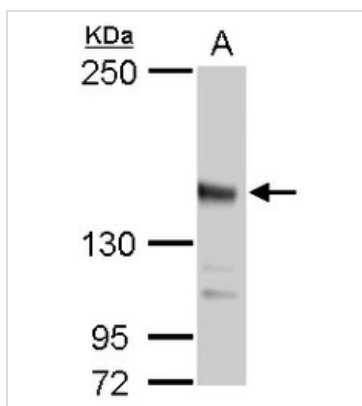

GTX129019 IHC-P Image

JARID2 antibody detects JARID2 protein at nucleus by immunohistochemical analysis.

Sample: Paraffin-embedded mouse brain.

JARID2 stained by JARID2 antibody (GTX129019) diluted at 1:500.

Antigen Retrieval: Citrate buffer, pH 6.0, 15 min


GTX129019 WB Image

JARID2 antibody detects JARID2 protein by western blot analysis.

A. 50 μ g fetal mouse forebrain lysate/extract

5 % SDS-PAGE

JARID2 antibody (GTX129019) dilution: 1:1000



For full product information, images and publications, please visit our [website](https://www.genetex.com).