

## eNOS (phospho Ser1177) antibody

**Cat. No. GTX129058**

<b>Host</b>	Rabbit
<b>Clonality</b>	Polyclonal
<b>Isotype</b>	IgG
<b>Applications</b>	WB, ICC/IF
<b>Reactivity</b>	Human, Mouse, Rat

References ( 7 )

Package

100 µl, 25 µl

## Applications

**Application Note**

\*Optimal dilutions/concentrations should be determined by the researcher.

Suggested dilution	Recommended dilution
WB	1:500-1:3000
ICC/IF	1:100-1:1000

Not tested in other applications.

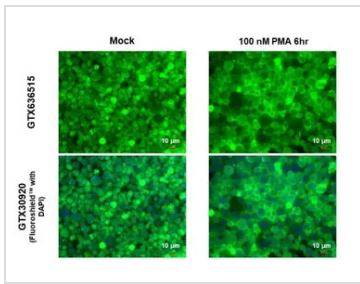
**Calculated MW** 133 kDa. ( [Note](#) )

## Properties

<b>Form</b>	Liquid
<b>Buffer</b>	PBS, 1% BSA, 20% Glycerol
<b>Preservative</b>	0.025% ProClin 300
<b>Storage</b>	Store as concentrated solution. Centrifuge briefly prior to opening vial. For short-term storage (1-2 weeks), store at 4°C. For long-term storage, aliquot and store at -20°C or below. Avoid multiple freeze-thaw cycles.
<b>Concentration</b>	1.05 mg/ml (Please refer to the vial label for the specific concentration.)
<b>Immunogen</b>	Carrier-protein conjugated synthetic peptide surrounding phospho Ser1177 of human eNOS. The exact sequence is proprietary.
<b>Purification</b>	Purified by antigen-affinity chromatography.
<b>Conjugation</b>	Unconjugated
<b>Note</b>	For laboratory research use only. Not for any clinical, therapeutic, or diagnostic use in humans or animals. Not for animal or human consumption.  Purchasers shall not, and agree not to enable third parties to, analyze, copy, reverse engineer or otherwise attempt to determine the structure or sequence of the product.

For full product information, images and publications, please visit our [website](#).

DATA IMAGES



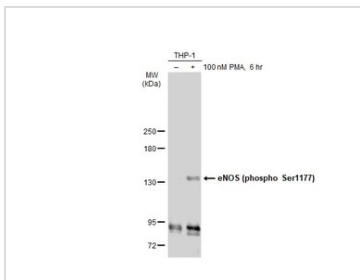
**GTX129058 ICC/IF Image**

eNOS (phospho Ser1177) antibody detects eNOS (phospho Ser1177) protein at cell membrane by immunofluorescent analysis.

Sample: THP-1 cells were fixed in 4% paraformaldehyde at RT for 15 min.

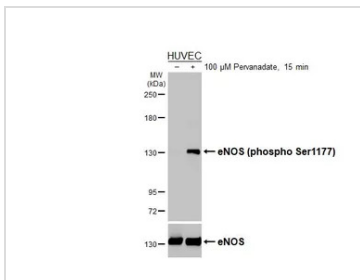
Green: eNOS (phospho Ser1177) stained by eNOS (phospho Ser1177) antibody (GTX129058) diluted at 1:500.

Blue: Fluoroshield with DAPI (GTX30920).



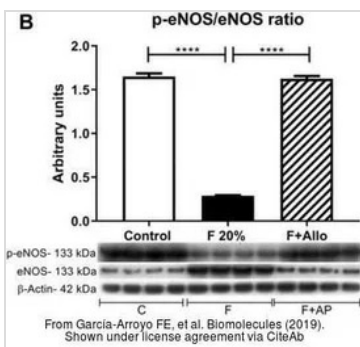
**GTX129058 WB Image**

Untreated (-) and treated (+) THP-1 whole cell extracts (30 μg) were separated by 5% SDS-PAGE, and the membrane was blotted with eNOS (phospho Ser1177) antibody (GTX129058) diluted at 1:1000. The HRP-conjugated anti-rabbit IgG antibody (GTX213110-01) was used to detect the primary antibody.



**GTX129058 WB Image**

Untreated (-) and treated (+) HUVEC whole cell extracts (30 μg) were separated by 5% SDS-PAGE, and the membranes were blotted with eNOS (phospho Ser1177) antibody (GTX129058) diluted at 1:500 and eNOS antibody (GTX133404) diluted at 1:500. The HRP-conjugated anti-rabbit IgG antibody (GTX213110-01) was used to detect the primary antibody.



**GTX129058 WB Image**

The data was published in the journal Biomolecules in 2019. [PMID: 31614639](https://pubmed.ncbi.nlm.nih.gov/31614639/)



For full product information, images and publications, please visit our [website](https://www.genetex.com).