

FIP200 antibody

Cat. No. GTX129093

Host	Rabbit
Clonality	Polyclonal
Isotype	IgG
Applications	WB, ICC/IF, IHC-P
Reactivity	Human

References (2)

Package

100 µl, 25 µl

Applications

Application Note

*Optimal dilutions/concentrations should be determined by the researcher.

Suggested dilution	Recommended dilution
WB	1:1000-1:10000
ICC/IF	1:100-1:1000
IHC-P	Assay dependent

Not tested in other applications.

Calculated MW 183 kDa. ([Note](#))

Product Note KO/KD validation is based on published data (PMID: 36280710).

Properties

Form	Liquid
Buffer	PBS, 20% Glycerol
Preservative	0.025% ProClin 300
Storage	Store as concentrated solution. Centrifuge briefly prior to opening vial. For short-term storage (1-2 weeks), store at 4°C. For long-term storage, aliquot and store at -20°C or below. Avoid multiple freeze-thaw cycles.
Concentration	1 mg/ml (Please refer to the vial label for the specific concentration.)
Immunogen	Recombinant protein encompassing a sequence within the N-terminus region of human FIP200. The exact sequence is proprietary.
Purification	Purified by antigen-affinity chromatography.
Conjugation	Unconjugated



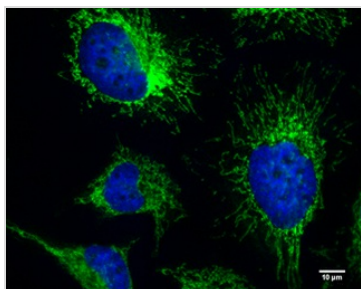
For full product information, images and publications, please visit our [website](#).

For laboratory research use only. Not for any clinical, therapeutic, or diagnostic use in humans or animals. Not for animal or human consumption.

Note

Purchasers shall not, and agree not to enable third parties to, analyze, copy, reverse engineer or otherwise attempt to determine the structure or sequence of the product.

DATA IMAGES



GTX129093 ICC/IF Image

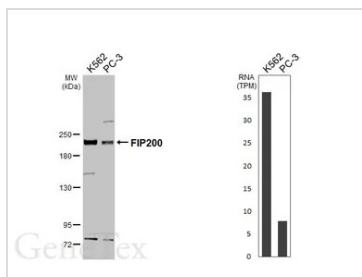
FIP200 antibody detects FIP200 protein at cytoplasm by immunofluorescent analysis.

Sample: HeLa cells were fixed in 4% paraformaldehyde at RT for 10 min.

Green: FIP200 protein stained by FIP200 antibody (GTX129093) diluted at 1:200.

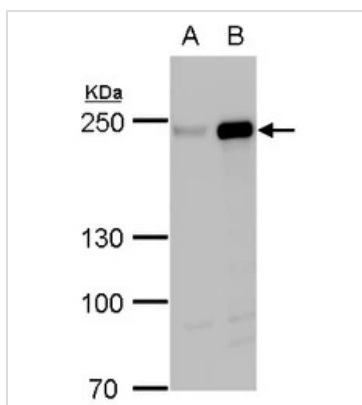
Blue: Hoechst 33342 staining.

Scale bar = 10 μ m.



GTX129093 WB Image

Various whole cell extracts (30 μ g) were separated by 5% SDS-PAGE, and the membrane was blotted with FIP200 antibody (GTX129093) diluted at 1:1000. The HRP-conjugated anti-rabbit IgG antibody (GTX213110-01) was used to detect the primary antibody. Corresponding RNA expression data for the same cell lines are based on Human Protein Atlas program.



GTX129093 WB Image

FIP200 antibody detects FIP200 protein by western blot analysis.

A. 30 μ g 293T whole cell lysate/extract

B. 30 μ g whole cell lysate/extract of human FIP200-transfected 293T cells

5 % SDS-PAGE

FIP200 antibody (GTX129093) dilution: 1:5000



For full product information, images and publications, please visit our [website](https://www.genetex.com).