

Rubicon antibody

Cat. No. GTX129096

Host	Rabbit
Clonality	Polyclonal
Isotype	IgG
Applications	WB, IP
Reactivity	Human, Mouse

References (2)

Package

100 µl, 25 µl

Applications

Application Note

*Optimal dilutions/concentrations should be determined by the researcher.

Suggested dilution	Recommended dilution
WB	1:500-1:20000
IP	1:100-1:500

Not tested in other applications.

Calculated MW 109 kDa. ([Note](#))

Properties

Form	Liquid
Buffer	PBS, 1% BSA, 20% Glycerol
Preservative	0.025% ProClin 300
Storage	Store as concentrated solution. Centrifuge briefly prior to opening vial. For short-term storage (1-2 weeks), store at 4°C. For long-term storage, aliquot and store at -20°C or below. Avoid multiple freeze-thaw cycles.
Concentration	0.48 mg/ml (Please refer to the vial label for the specific concentration.)
Immunogen	Recombinant protein encompassing a sequence within the C-terminus region of human Rubicon. The exact sequence is proprietary.
Purification	Purified by antigen-affinity chromatography.
Conjugation	Unconjugated

Note

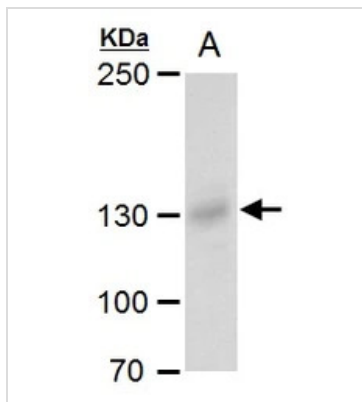
For laboratory research use only. Not for any clinical, therapeutic, or diagnostic use in humans or animals. Not for animal or human consumption.

Purchasers shall not, and agree not to enable third parties to, analyze, copy, reverse engineer or otherwise attempt to determine the structure or sequence of the product.



For full product information, images and publications, please visit our [website](#).

DATA IMAGES



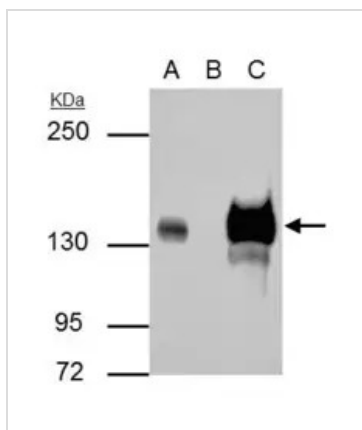
GTX129096 WB Image

Rubicon antibody detects Rubicon protein by western blot analysis.

A. 30 μ g MDA-MB-231 whole cell extract

5 % SDS-PAGE

Rubicon antibody (GTX129096) dilution: 1:1000



GTX129096 IP Image

Rubicon antibody immunoprecipitates Rubicon protein in IP experiments.

IP samples: whole cell extract of Rubicon-transfected 293T cells

A. 30 μ g 293T whole cell extract of Rubicon-protein expressing cell

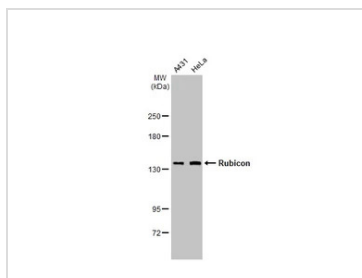
B. Control with 4 μ g of preimmune Rabbit IgG

C. Immunoprecipitation of Rubicon protein by 4 μ g Rubicon antibody (GTX129096)

5 % SDS-PAGE

The immunoprecipitated Rubicon protein was detected by Rubicon antibody (GTX129096) diluted at 1:1000.

[EasyBlot anti-rabbit IgG (GTX221666-01) was used as a secondary reagent]



GTX129096 WB Image

Various whole cell extracts (30 μ g) were separated by 5% SDS-PAGE, and the membrane was blotted with Rubicon antibody (GTX129096) diluted at 1:1000. The HRP-conjugated anti-rabbit IgG antibody (GTX213110-01) was used to detect the primary antibody.



For full product information, images and publications, please visit our [website](https://www.genetex.com).