

SIN3A antibody

Cat. No. GTX129156

Host	Rabbit
Clonality	Polyclonal
Isotype	IgG
Applications	WB, ICC/IF, IHC-P, IP, ChIP assay
Reactivity	Human, Mouse, Rat

References (2)

Package

100 µl, 25 µl

Applications

Application Note

*Optimal dilutions/concentrations should be determined by the researcher.

Suggested dilution	Recommended dilution
WB	1:500-1:3000
ICC/IF	1:100-1:1000
IHC-P	1:100-1:1000
IP	1:100-1:500
ChIP assay	Assay dependent

Not tested in other applications.

Calculated MW 145 kDa. ([Note](#))

Product Note KO/KD validation is based on published data (PMID: 28805661).

Properties

Form	Liquid
Buffer	PBS, 20% Glycerol
Preservative	0.025% ProClin 300
Storage	Store as concentrated solution. Centrifuge briefly prior to opening vial. For short-term storage (1-2 weeks), store at 4°C. For long-term storage, aliquot and store at -20°C or below. Avoid multiple freeze-thaw cycles.
Concentration	1.38 mg/ml (Please refer to the vial label for the specific concentration.)
Immunogen	Recombinant protein encompassing a sequence within the N-terminus region of human SIN3A. The exact sequence is proprietary.
Purification	Purified by antigen-affinity chromatography.
Conjugation	Unconjugated

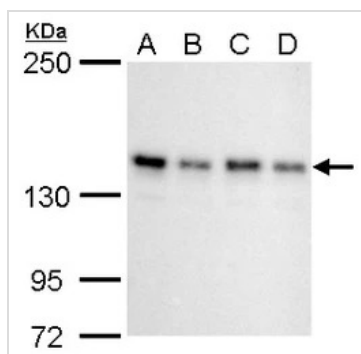


For full product information, images and publications, please visit our [website](#).

For laboratory research use only. Not for any clinical, therapeutic, or diagnostic use in humans or animals. Not for animal or human consumption.

Note

Purchasers shall not, and agree not to enable third parties to, analyze, copy, reverse engineer or otherwise attempt to determine the structure or sequence of the product.

DATA IMAGES

GTX129156 WB Image

SIN3A antibody detects SIN3A protein by western blot analysis.

A 293T whole cell lysate/extract

B A431 whole cell lysate/extract

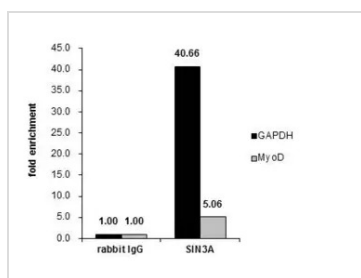
C HeLa whole cell lysate/extract

D HepG2 whole cell lysate/extract

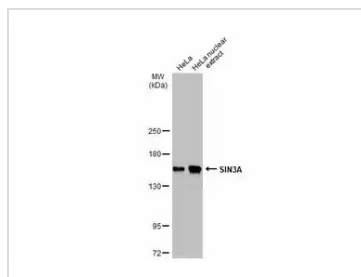
5% SDS-PAGE

SIN3A antibody (GTX129156) dilution: 1:1000

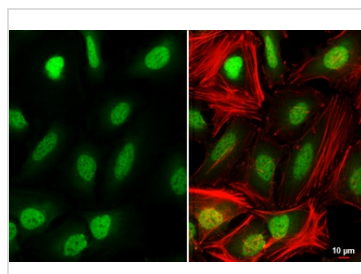
The HRP-conjugated anti-rabbit IgG antibody (GTX213110-01) was used to detect the primary antibody.


GTX129156 ChIP assay Image

Cross-linked ChIP was performed with MCF-7 chromatin extract treated with B-estradiol (10 nM for 45 min) and 5 µg of either control rabbit IgG or anti-SIN3A antibody. The precipitated DNA was detected by PCR with primer set targeting to GAPDH or MyoD.


GTX129156 WB Image

HeLa whole cell and nuclear extracts (30 µg) were separated by 5% SDS-PAGE, and the membrane was blotted with SIN3A antibody (GTX129156) diluted at 1:1000. The HRP-conjugated anti-rabbit IgG antibody (GTX213110-01) was used to detect the primary antibody.


GTX129156 ICC/IF Image

SIN3A antibody detects SIN3A protein at nucleus by immunofluorescent analysis.

Sample: HeLa cells were fixed in 4% paraformaldehyde at RT for 15 min.

Green: SIN3A stained by SIN3A antibody (GTX129156) diluted at 1:1000.

Red: phalloidin, a cytoskeleton marker, diluted at 1:200.

Scale bar= 10 µm.



For full product information, images and publications, please visit our [website](https://www.genetex.com).