

LEF1 antibody

Cat. No. GTX129186

Host	Rabbit
Clonality	Polyclonal
Isotype	IgG
Applications	WB, IHC-P
Reactivity	Human, Rat

References (6)

Package

100 µl, 25 µl

Applications

Application Note

*Optimal dilutions/concentrations should be determined by the researcher.

Suggested dilution	Recommended dilution
WB	1:500-1:3000
IHC-P	Assay dependent

Not tested in other applications.

Calculated MW 44 kDa. ([Note](#))

Product Note Knockdown/Knockout validation was supported by references (PMID:35801925)

Properties

Form	Liquid
Buffer	PBS, 20% Glycerol
Preservative	0.025% ProClin 300
Storage	Store as concentrated solution. Centrifuge briefly prior to opening vial. For short-term storage (1-2 weeks), store at 4°C. For long-term storage, aliquot and store at -20°C or below. Avoid multiple freeze-thaw cycles.
Concentration	1 mg/ml (Please refer to the vial label for the specific concentration.)
Immunogen	Recombinant protein encompassing a sequence within the N-terminus region of human LEF1. The exact sequence is proprietary.
Purification	Purified by antigen-affinity chromatography.
Conjugation	Unconjugated

Note

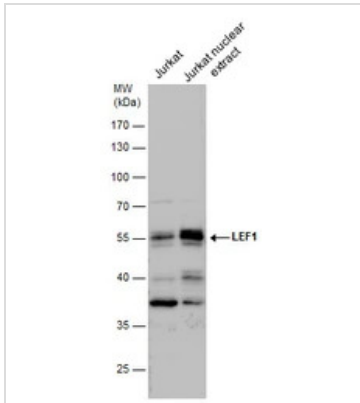
For laboratory research use only. Not for any clinical, therapeutic, or diagnostic use in humans or animals. Not for animal or human consumption.

Purchasers shall not, and agree not to enable third parties to, analyze, copy, reverse engineer or otherwise attempt to determine the structure or sequence of the product.



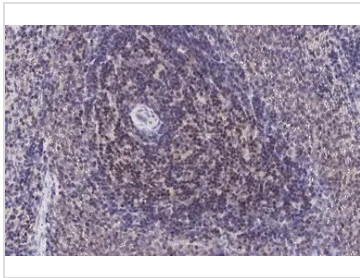
For full product information, images and publications, please visit our [website](#).

DATA IMAGES



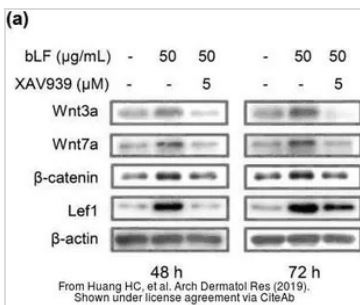
GTx129186 WB Image

LEF1 antibody detects LEF1 protein by western blot analysis. Jurkat whole cell extracts and nuclear extracts (30 µg) were separated by 10% SDS-PAGE, and the membrane was blotted with LEF1 antibody (GTx129186) diluted by 1:1000.



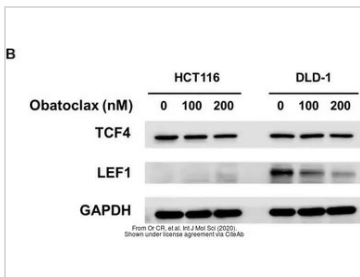
GTx129186 IHC-P Image

LEF1 antibody detects LEF1 protein at nucleus by immunohistochemical analysis.
Sample: Paraffin-embedded rat spleen.
LEF1 stained by LEF1 antibody (GTx129186) diluted at 1:500.
Antigen Retrieval: Citrate buffer, pH 6.0, 15 min



GTx129186 WB Image

The data was published in the journal Arch Dermatol Res in 2019.[PMID: 31006055](https://pubmed.ncbi.nlm.nih.gov/31006055/)



GTx129186 WB Image

The data was published in the journal Int J Mol Sci in 2020.[PMID: 32150830](https://pubmed.ncbi.nlm.nih.gov/32150830/)



For full product information, images and publications, please visit our [website](https://www.genetex.com).