

ASCL1 antibody

Cat. No. GTX129189

Host	Rabbit
Clonality	Polyclonal
Isotype	IgG
Applications	WB, ICC/IF, IHC-P
Reactivity	Human, Rat, Dog

References (4)

Package

100 µl, 25 µl

Applications

Application Note

*Optimal dilutions/concentrations should be determined by the researcher.

Suggested dilution	Recommended dilution
WB	1:500-1:3000
ICC/IF	1:100-1:1000
IHC-P	1:100-1:1000

Not tested in other applications.

Calculated MW 25 kDa. ([Note](#))

Properties

Form	Liquid
Buffer	PBS, 20% Glycerol
Preservative	0.025% ProClin 300
Storage	Store as concentrated solution. Centrifuge briefly prior to opening vial. For short-term storage (1-2 weeks), store at 4°C. For long-term storage, aliquot and store at -20°C or below. Avoid multiple freeze-thaw cycles.
Concentration	1.65 mg/ml (Please refer to the vial label for the specific concentration.)
Immunogen	Recombinant protein encompassing a sequence within the center region of human ASCL1. The exact sequence is proprietary.
Purification	Purified by antigen-affinity chromatography.
Conjugation	Unconjugated

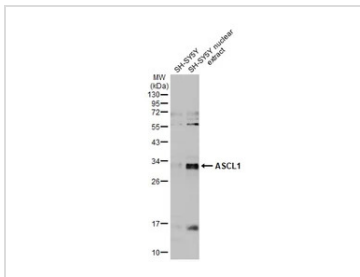
Note

For laboratory research use only. Not for any clinical, therapeutic, or diagnostic use in humans or animals. Not for animal or human consumption.

Purchasers shall not, and agree not to enable third parties to, analyze, copy, reverse engineer or otherwise attempt to determine the structure or sequence of the product.

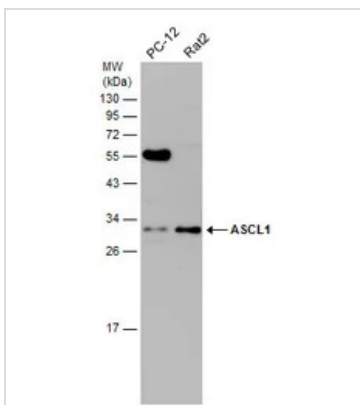
For full product information, images and publications, please visit our [website](#).

DATA IMAGES



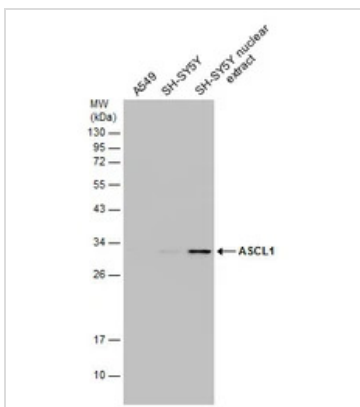
GTx129189 WB Image

SH-SY5Y whole cell and nuclear extracts (30 µg) were separated by 12% SDS-PAGE, and the membrane was blotted with ASCL1 antibody (GTx129189) diluted at 1:1000. The HRP-conjugated anti-rabbit IgG antibody (GTx213110-01) was used to detect the primary antibody.



GTx129189 WB Image

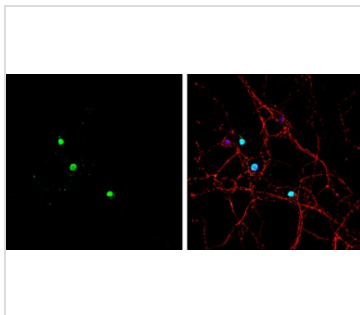
Various whole cell extracts (30 µg) were separated by 12% SDS-PAGE, and the membrane was blotted with ASCL1 antibody (GTx129189) diluted at 1:1000.



GTx129189 WB Image

Various whole cell and SH-SY5Y nuclear extracts (30 µg) were separated by 12% SDS-PAGE, and the membrane was blotted with ASCL1 antibody (GTx129189) diluted at 1:1000.

The observed M.W. is based on the publication: [PMID: 26482608](https://pubmed.ncbi.nlm.nih.gov/26482608/)



GTx129189 ICC/IF Image

ASCL1 antibody detects ASCL1 protein by immunofluorescent analysis.

Sample: DIV9 rat E18 primary hippocampal neuron cells were fixed in 4% paraformaldehyde at RT for 15 min.

Green: ASCL1 stained by ASCL1 antibody (GTx129189) diluted at 1:500.

Red: beta Tubulin 3/ Tuj1, stained by beta Tubulin 3/ Tuj1 antibody [GT11710] (GTx631836) diluted at 1:500.

Blue: Fluoroshield with DAPI (GTx30920).



For full product information, images and publications, please visit our [website](https://www.genetex.com).