

ER81 antibody

Cat. No. GTX129202

Host	Rabbit
Clonality	Polyclonal
Isotype	IgG
Applications	WB, ICC/IF, IHC-P, IHC-Fr
Reactivity	Human, Mouse, Rat

References (3)

Package

100 µl, 25 µl

Applications

Application Note

*Optimal dilutions/concentrations should be determined by the researcher.

Suggested dilution	Recommended dilution
WB	1:500-1:3000
ICC/IF	1:100-1:1000
IHC-P	Assay dependent
IHC-Fr	1:100-1:1000

Not tested in other applications.

Calculated MW 55 kDa. ([Note](#))

Product Note This antibody was raised against ER81 isoform 1. Based on sequence homology, this antibody can recognize most ER81 isoforms, but it may be unable to recognize isoform 4 according to the customer's feedback.

Properties

Form	Liquid
Buffer	PBS, 1% BSA, 20% Glycerol
Preservative	0.025% ProClin 300
Storage	Store as concentrated solution. Centrifuge briefly prior to opening vial. For short-term storage (1-2 weeks), store at 4°C. For long-term storage, aliquot and store at -20°C or below. Avoid multiple freeze-thaw cycles.
Concentration	0.34 mg/ml (Please refer to the vial label for the specific concentration.)
Immunogen	Recombinant protein encompassing a sequence within the center region of human ER81. The exact sequence is proprietary.
Purification	Purified by antigen-affinity chromatography.
Conjugation	Unconjugated

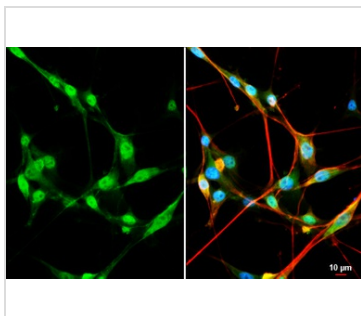


For full product information, images and publications, please visit our [website](#).

For laboratory research use only. Not for any clinical, therapeutic, or diagnostic use in humans or animals. Not for animal or human consumption.

Note

Purchasers shall not, and agree not to enable third parties to, analyze, copy, reverse engineer or otherwise attempt to determine the structure or sequence of the product.

DATA IMAGES

GTx129202 ICC/IF Image

ER81 antibody detects ER81 protein at nucleus by immunofluorescent analysis.

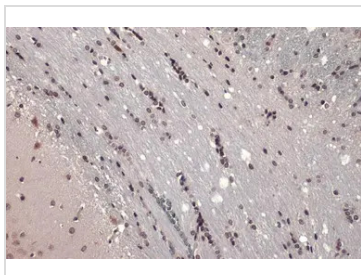
Sample: U87-MG cells were fixed in 4% paraformaldehyde at RT for 15 min.

Green: ER81 stained by ER81 antibody (GTx129202) diluted at 1:200.

Red: alpha Tubulin, a cytoskeleton marker, stained by alpha Tubulin antibody [GT114] (GTx628802) diluted at 1:1000.

Blue: Fluoroshield with DAPI (GTx30920).

Scale bar= 10µm.

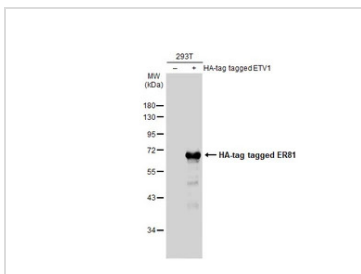

GTx129202 IHC-P Image

ER81 antibody detects ER81 protein at nucleus by immunohistochemical analysis.

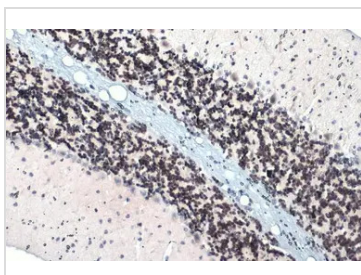
Sample: Paraffin-embedded rat brain.

ER81 stained by ER81 antibody (GTx129202) diluted at 1:500.

Antigen Retrieval: Citrate buffer, pH 6.0, 15 min


GTx129202 WB Image

Non-transfected (–) and transfected (+) 293T whole cell extracts (30 µg) were separated by 10% SDS-PAGE, and the membrane was blotted with ER81 antibody (GTx129202) diluted at 1:5000. The HRP-conjugated anti-rabbit IgG antibody (GTx213110-01) was used to detect the primary antibody.


GTx129202 IHC-P Image

ER81 antibody detects ER81 protein at nucleus by immunohistochemical analysis.

Sample: Paraffin-embedded mouse brain.

ER81 stained by ER81 antibody (GTx129202) diluted at 1:500.

Antigen Retrieval: Citrate buffer, pH 6.0, 15 min



For full product information, images and publications, please visit our [website](https://www.genetex.com).