

MCM6 antibody

Cat. No. GTX129216

Host	Rabbit
Clonality	Polyclonal
Isotype	IgG
Applications	WB, ICC/IF, IHC-P, IP, ChIP assay
Reactivity	Human

References (1)

★★★★☆☆ Review (1)

Package

100 µl, 25 µl

Applications

Application Note

*Optimal dilutions/concentrations should be determined by the researcher.

Suggested dilution	Recommended dilution
WB	1:500-1:3000
ICC/IF	1:100-1:1000
IHC-P	1:100-1:1000
IP	1:100-1:500
ChIP assay	Assay dependent

Not tested in other applications.

Calculated MW 93 kDa. ([Note](#))

Product Note IP/MS validation is based on published data (PMID: 30377417).

Properties

Form	Liquid
Buffer	PBS, 20% Glycerol
Preservative	0.01% Thimerosal
Storage	Store as concentrated solution. Centrifuge briefly prior to opening vial. For short-term storage (1-2 weeks), store at 4°C. For long-term storage, aliquot and store at -20°C or below. Avoid multiple freeze-thaw cycles.
Concentration	1 mg/ml (Please refer to the vial label for the specific concentration.)
Immunogen	Recombinant protein encompassing a sequence within the C-terminus region of human MCM6. The exact sequence is proprietary.
Purification	Purified by antigen-affinity chromatography.
Conjugation	Unconjugated

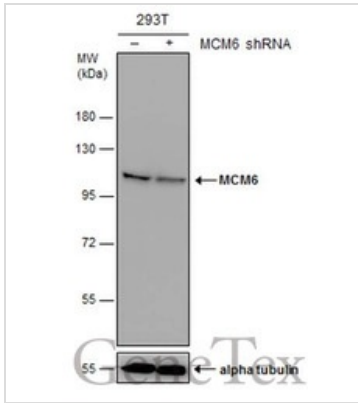
For full product information, images and publications, please visit our [website](#).

For laboratory research use only. Not for any clinical, therapeutic, or diagnostic use in humans or animals. Not for animal or human consumption.

Note

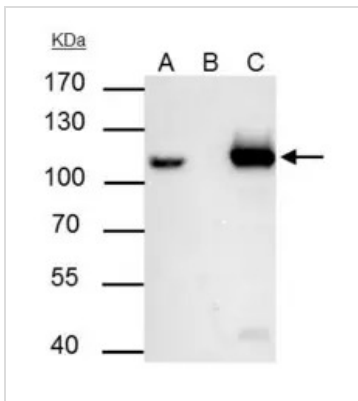
Purchasers shall not, and agree not to enable third parties to, analyze, copy, reverse engineer or otherwise attempt to determine the structure or sequence of the product.

DATA IMAGES



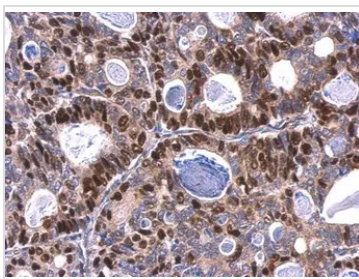
GTX129216 WB Image

Non-transfected (–) and transfected (+) 293T whole cell extracts (30 µg) were separated by 7.5% SDS-PAGE, and the membrane was blotted with MCM6 antibody (GTX129216) diluted at 1:1000.



GTX129216 IP Image

MCM6 antibody immunoprecipitates MCM6 protein in IP experiments. IP Sample: 293T whole cell lysate/extract A : 30 µg whole cell lysate/extract of MCM6 protein expressing 293T cells B : Control with 3 µg of pre-immune rabbit IgG C : Immunoprecipitation of MCM6 by 3 µg of MCM6 antibody (GTX129216) 7.5% SDS-PAGE The immunoprecipitated MCM6 protein was detected by MCM6 antibody (GTX129216) diluted at 1 : 500. EasyBlot anti-rabbit IgG (HRP) (GTX221666-01) was used as a secondary reagent.



GTX129216 IHC-P Image

MCM6 antibody detects MCM6 protein at nucleus on human gastric carcinoma by immunohistochemical analysis.

Sample: Paraffin-embedded human gastric carcinoma.

MCM6 antibody (GTX129216) dilution: 1:500.

Antigen Retrieval: Trilogy™ (EDTA based, pH 8.0) buffer, 15min



For full product information, images and publications, please visit our [website](https://www.genetex.com).