

## TCF3 / E2A antibody

**Cat. No. GTX129237**

<b>Host</b>	Rabbit
<b>Clonality</b>	Polyclonal
<b>Isotype</b>	IgG
<b>Application</b>	WB, ICC/IF, IP
<b>Reactivity</b>	Human

**Package**  
100 µl, 25 µl

### APPLICATION

#### Application Note

\*Optimal dilutions/concentrations should be determined by the researcher.

Suggested dilution	Recommended dilution
WB	1:1000-1:3000
ICC/IF	1:100-1:1000
IP	1:100-1:500

Not tested in other applications.

**Calculated MW** 68 kDa. ( [Note](#) )

### PROPERTIES

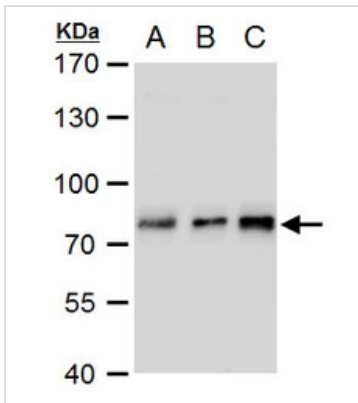
<b>Form</b>	Liquid
<b>Buffer</b>	PBS, 20% Glycerol
<b>Preservative</b>	0.025% ProClin 300
<b>Storage</b>	Store as concentrated solution. Centrifuge briefly prior to opening vial. For short-term storage (1-2 weeks), store at 4°C. For long-term storage, aliquot and store at -20°C or below. Avoid multiple freeze-thaw cycles.
<b>Concentration</b>	1 mg/ml (Please refer to the vial label for the specific concentration.)
<b>Immunogen</b>	Recombinant protein encompassing a sequence within the N-terminus region of human TCF3. The exact sequence is proprietary.
<b>Purification</b>	Purified by antigen-affinity chromatography.
<b>Conjugation</b>	Unconjugated

**Note** For laboratory research use only. Not for any clinical, therapeutic, or diagnostic use in humans or animals. Not for animal or human consumption.

Purchasers shall not, and agree not to enable third parties to, analyze, copy, reverse engineer or otherwise attempt to determine the structure or sequence of the product.



For full product information, images and publications, please visit our [website](#).

**DATA IMAGES**

**GTx129237 WB Image**

TCF3 / E2A antibody detects TCF3 protein by western blot analysis.

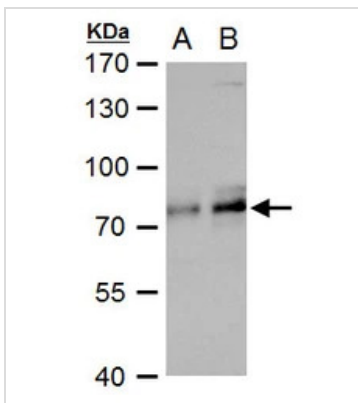
A. 30 µg Jurkat whole cell extract

B. 30 µg Raji whole cell extract

C. 30 µg NCI-H929 whole cell extract

7.5 % SDS-PAGE

TCF3 / E2A antibody (GTx129237) dilution: 1:2500


**GTx129237 WB Image**

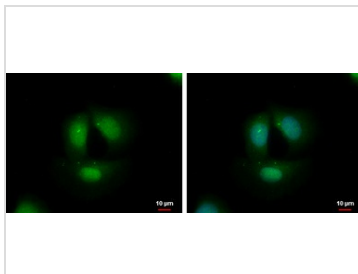
TCF3 / E2A antibody detects TCF3 protein by western blot analysis.

A. 30 µg NCI-H929 whole cell extract

B. 30 µg NCI-H929 nuclear extract

7.5 % SDS-PAGE

TCF3 / E2A antibody (GTx129237) dilution: 1:3000

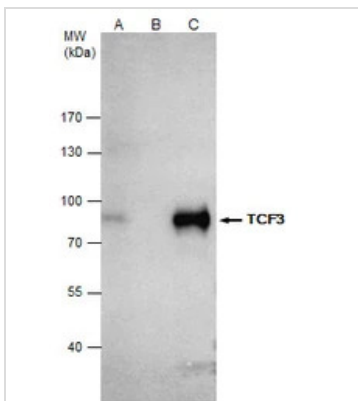

**GTx129237 ICC/IF Image**

TCF3 / E2A antibody detects TCF3 protein at nucleus by immunofluorescent analysis.

Sample: MCF-7 cells were fixed in 4% paraformaldehyde at RT for 15 min.

Green: TCF3 protein stained by TCF3 / E2A antibody (GTx129237) diluted at 1:500.

Blue: Hoechst 33342 staining.


**GTx129237 IP Image**

TCF3 / E2A antibody immunoprecipitates TCF3 protein in IP experiments.

IP samples: Jurkat whole cell extract

A. 50 µg Jurkat whole cell extract

B. Control with 4 µg of preimmune Rabbit IgG

C. Immunoprecipitation of TCF3 protein by 4 µg TCF3 / E2A antibody (GTx129237)

7.5 % SDS-PAGE

The immunoprecipitated TCF3 protein was detected by TCF3 / E2A antibody (GTx129237) diluted at 1:500.

[EasyBlot anti-rabbit IgG (GTx221666-01) was used as a secondary reagent]



For full product information, images and publications, please visit our [website](https://www.genetex.com).