

## MAFK antibody

**Cat. No. GTX129240**

<b>Host</b>	Rabbit
<b>Clonality</b>	Polyclonal
<b>Isotype</b>	IgG
<b>Applications</b>	WB, IP, ChIP assay
<b>Reactivity</b>	Human, Mouse

References ( 4 )

Package

100 µl, 25 µl

## Applications

**Application Note**

\*Optimal dilutions/concentrations should be determined by the researcher.

Suggested dilution	Recommended dilution
WB	1:500-1:3000
IP	1:100-1:500
ChIP assay	Assay dependent

Not tested in other applications.

**Calculated MW** 18 kDa. ( [Note](#) )

## Properties

<b>Form</b>	Liquid
<b>Buffer</b>	PBS, 20% Glycerol
<b>Preservative</b>	0.025% ProClin 300
<b>Storage</b>	Store as concentrated solution. Centrifuge briefly prior to opening vial. For short-term storage (1-2 weeks), store at 4°C. For long-term storage, aliquot and store at -20°C or below. Avoid multiple freeze-thaw cycles.
<b>Concentration</b>	1 mg/ml (Please refer to the vial label for the specific concentration.)
<b>Immunogen</b>	Full length human MAFK Recombinant protein.
<b>Purification</b>	Purified by antigen-affinity chromatography.
<b>Conjugation</b>	Unconjugated

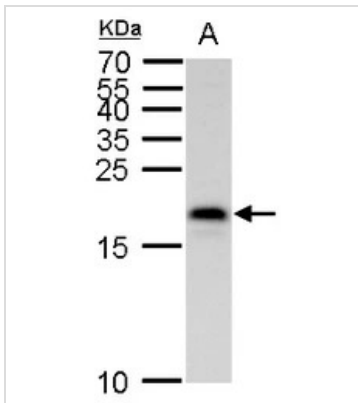
**Note**

For laboratory research use only. Not for any clinical, therapeutic, or diagnostic use in humans or animals. Not for animal or human consumption.

Purchasers shall not, and agree not to enable third parties to, analyze, copy, reverse engineer or otherwise attempt to determine the structure or sequence of the product.

For full product information, images and publications, please visit our [website](#).

## DATA IMAGES

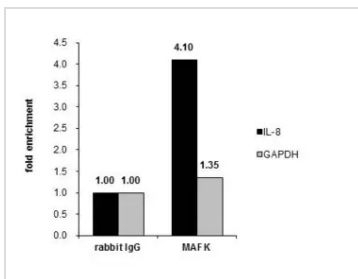
**GTx129240 WB Image**

MAFK antibody detects MAFK protein by western blot analysis.

A. 30  $\mu$ g Jurkat whole cell lysate/extract

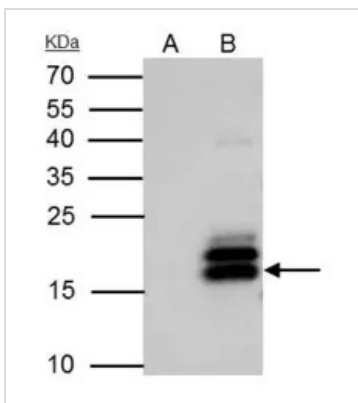
15 % SDS-PAGE

MAFK antibody (GTx129240) dilution: 1:500

**GTx129240 ChIP assay Image**

Cross-linked ChIP was performed with HepG2 chromatin extract treated with LPS (10 ng/ml for 1 h) and 5  $\mu$ g of either normal rabbit IgG or anti-MAFK antibody. The precipitated DNA was detected by PCR with primer set targeting to IL-8 or GAPDH .

ChIP experiment and primer designs are based on [Sci Rep. 2013 Nov 19;3:3242](https://doi.org/10.1038/s41598-013-03242-2).

**GTx129240 IP Image**

MAFK antibody immunoprecipitates MAFK protein in IP experiments.

IP samples: Jurkat whole cell extract

A. Control with 4  $\mu$ g of preimmune Rabbit IgG

B. Immunoprecipitation of MAFK protein by 4  $\mu$ g MAFK antibody (GTx129240)

15 % SDS-PAGE

The immunoprecipitated MAFK protein was detected by MAFK antibody (GTx129240) diluted at 1:500.

[EasyBlot anti-rabbit IgG (GTx221666-01) was used as a secondary reagent]



For full product information, images and publications, please visit our [website](https://www.genetex.com).