

## LHX2 antibody

Cat. No. GTX129241

<b>Host</b>	Rabbit
<b>Clonality</b>	Polyclonal
<b>Isotype</b>	IgG
<b>Applications</b>	WB, IHC-Fr, IHC-Wm
<b>Reactivity</b>	Human, Mouse, Rat, Japanese Medaka

References ( 6 )

Package

100 µl, 25 µl

## Applications

## Application Note

\*Optimal dilutions/concentrations should be determined by the researcher.

Suggested dilution	Recommended dilution
WB	1:500-1:20000
IHC-Fr	1:100-1:1000
IHC-Wm	Assay dependent

Not tested in other applications.

Calculated MW 44 kDa. ( [Note](#) )

## Properties

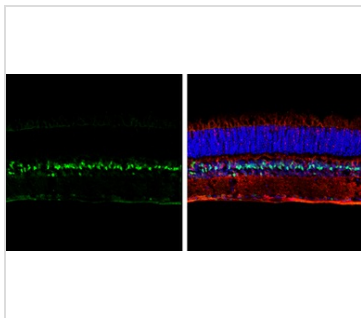
<b>Form</b>	Liquid
<b>Buffer</b>	PBS, 20% Glycerol
<b>Preservative</b>	0.025% ProClin 300
<b>Storage</b>	Store as concentrated solution. Centrifuge briefly prior to opening vial. For short-term storage (1-2 weeks), store at 4°C. For long-term storage, aliquot and store at -20°C or below. Avoid multiple freeze-thaw cycles.
<b>Concentration</b>	0.97 mg/ml (Please refer to the vial label for the specific concentration.)
<b>Immunogen</b>	Recombinant protein encompassing a sequence within the C-terminus region of human LHX2. The exact sequence is proprietary.
<b>Purification</b>	Purified by antigen-affinity chromatography.
<b>Conjugation</b>	Unconjugated

## Note

For laboratory research use only. Not for any clinical, therapeutic, or diagnostic use in humans or animals. Not for animal or human consumption.

Purchasers shall not, and agree not to enable third parties to, analyze, copy, reverse engineer or otherwise attempt to determine the structure or sequence of the product.

For full product information, images and publications, please visit our [website](#).

**DATA IMAGES**

**GTX129241 IHC-Fr Image**

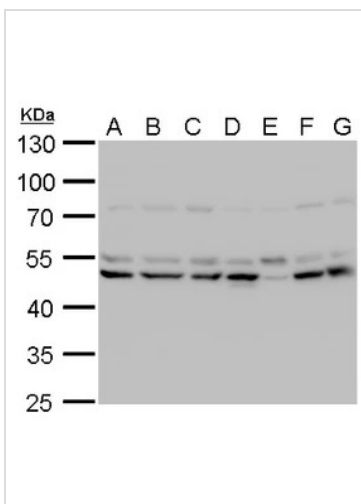
LHX2 antibody detects LHX2 protein expression by immunohistochemical analysis.

Sample: Frozen sectioned adult mouse retina.

Green: LHX2 protein stained by LHX2 antibody (GTX129241) diluted at 1:250.

Red: beta Tubulin 3/ TUJ1, stained by beta Tubulin 3/ TUJ1 antibody [GT11710] (GTX631836) diluted at 1:250.

Blue: Fluoroshield with DAPI (GTX30920).


**GTX129241 WB Image**

LHX2 antibody detects LHX2 protein by western blot analysis.

A. Neuro2A whole cell lysate/extract

B. GL261 whole cell lysate/extract

C. C8D30 whole cell lysate/extract

D. NIH-3T3 whole cell lysate/extract

E. BCL-1 whole cell lysate/extract

F. BCL-1 whole cell lysate/extract

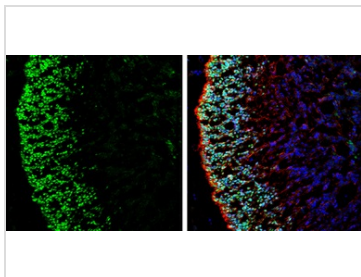
G. Raw264.7 whole cell lysate/extract

H. C2C12 whole cell lysate/extract

10% SDS-PAGE

LHX2 antibody (GTX129241) dilution: 1:1000

The HRP-conjugated anti-rabbit IgG antibody (GTX213110-01) was used to detect the primary antibody.


**GTX129241 IHC-Fr Image**

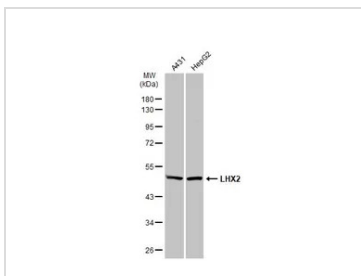
LHX2 antibody detects LHX2 protein by immunohistochemical analysis.

Sample: Frozen-sectioned rat E13.5 brain.

Green: LHX2 stained by LHX2 antibody (GTX129241) diluted at 1:250.

Red: beta Tubulin 3/ Tuj1, stained by beta Tubulin 3/ Tuj1 antibody [GT1338] (GTX631831) diluted at 1:500.

Blue: Fluoroshield with DAPI (GTX30920).


**GTX129241 WB Image**

Various whole cell extracts (30 µg) were separated by 10% SDS-PAGE, and the membrane was blotted with LHX2 antibody (GTX129241) diluted at 1:1000. The HRP-conjugated anti-rabbit IgG antibody (GTX213110-01) was used to detect the primary antibody.



For full product information, images and publications, please visit our [website](https://www.genetex.com).