

HOXB13 antibody

Cat. No. GTX129245

Host	Rabbit
Clonality	Polyclonal
Isotype	IgG
Applications	WB, IP, ChIP assay
Reactivity	Human, Mouse

References (6)

Package

100 µl, 25 µl

Applications

Application Note

*Optimal dilutions/concentrations should be determined by the researcher.

Suggested dilution	Recommended dilution
WB	1:500-1:3000
IP	1:100-1:500
ChIP assay	Assay dependent

Not tested in other applications.

Calculated MW 31 kDa. ([Note](#))

Properties

Form	Liquid
Buffer	PBS, 20% Glycerol
Preservative	0.025% ProClin 300
Storage	Store as concentrated solution. Centrifuge briefly prior to opening vial. For short-term storage (1-2 weeks), store at 4°C. For long-term storage, aliquot and store at -20°C or below. Avoid multiple freeze-thaw cycles.
Concentration	1 mg/ml (Please refer to the vial label for the specific concentration.)
Immunogen	Recombinant protein encompassing a sequence within the center region of human HOXB13. The exact sequence is proprietary.
Purification	Purified by antigen-affinity chromatography.
Conjugation	Unconjugated

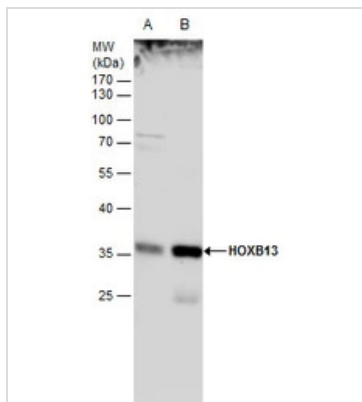
Note

For laboratory research use only. Not for any clinical, therapeutic, or diagnostic use in humans or animals. Not for animal or human consumption.

Purchasers shall not, and agree not to enable third parties to, analyze, copy, reverse engineer or otherwise attempt to determine the structure or sequence of the product.

For full product information, images and publications, please visit our [website](#).

DATA IMAGES



GTX129245 WB Image

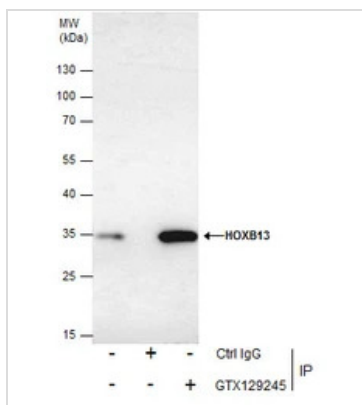
HOXB13 antibody detects HOXB13 protein by western blot analysis.

A. 30 μ g PC-3 whole cell extract

B. 30 μ g PC-3 nuclear extract

12 % SDS-PAGE

HOXB13 antibody (GTX129245) dilution: 1:1000



GTX129245 IP Image

Immunoprecipitation of HOXB13 protein from PC-3 nuclear extracts using 5 μ g of HOXB13 antibody (GTX129245).

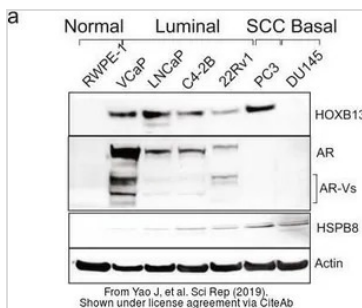
Western blot analysis was performed using HOXB13 antibody (GTX129245) diluted at 1:500.

EasyBlot anti-Rabbit IgG (GTX221666-01) was used as a secondary reagent.



GTX129245 WB Image

The data was published in the journal Sci Rep in 2019. [PMID: 31273254](https://doi.org/10.1038/s41598-019-51273-2)



GTX129245 WB Image

The data was published in the journal Sci Rep in 2019. [PMID: 31273254](https://doi.org/10.1038/s41598-019-51273-2)



For full product information, images and publications, please visit our [website](https://www.genetex.com).