

## FOXP1 antibody

**Cat. No. GTX129252**

<b>Host</b>	Rabbit
<b>Clonality</b>	Polyclonal
<b>Isotype</b>	IgG
<b>Applications</b>	WB, IHC-P
<b>Reactivity</b>	Human, Mouse

**Package**  
100 µl, 25 µl

## Applications

**Application Note**

\*Optimal dilutions/concentrations should be determined by the researcher.

Suggested dilution	Recommended dilution
WB	1:500-1:3000
IHC-P	Assay dependent

Not tested in other applications.

**Calculated MW** 75 kDa. ([Note](#))

## Properties

**Form** Liquid

**Buffer** PBS, 20% Glycerol

**Preservative** 0.025% ProClin 300

**Storage** Store as concentrated solution. Centrifuge briefly prior to opening vial. For short-term storage (1-2 weeks), store at 4°C. For long-term storage, aliquot and store at -20°C or below. Avoid multiple freeze-thaw cycles.

**Concentration** 1 mg/ml (Please refer to the vial label for the specific concentration.)

**Immunogen** Recombinant protein encompassing a sequence within the center region of human FOXP1. The exact sequence is proprietary.

**Purification** Purified by antigen-affinity chromatography.

**Conjugation** Unconjugated

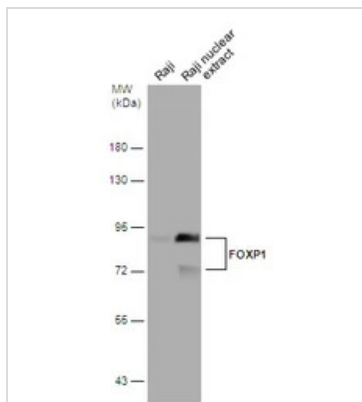
**Note** For laboratory research use only. Not for any clinical, therapeutic, or diagnostic use in humans or animals. Not for animal or human consumption.

Purchasers shall not, and agree not to enable third parties to, analyze, copy, reverse engineer or otherwise attempt to determine the structure or sequence of the product.

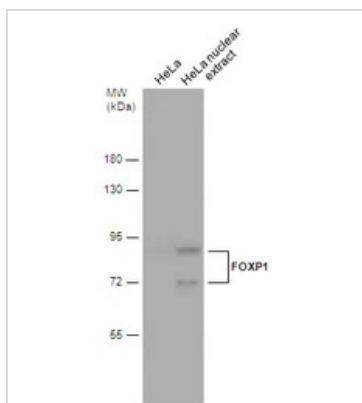


For full product information, images and publications, please visit our [website](#).

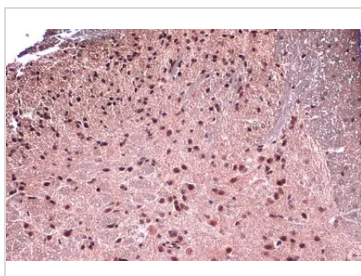
## DATA IMAGES

**GTX129252 WB Image**

Raji whole cell and nuclear extracts (30 µg) were separated by 7.5% SDS-PAGE, and the membrane was blotted with FOXP1 antibody (GTX129252) diluted at 1:500.

**GTX129252 WB Image**

HeLa whole cell and nuclear extracts (30 µg) were separated by 7.5% SDS-PAGE, and the membrane was blotted with FOXP1 antibody (GTX129252) diluted at 1:500.

**GTX129252 IHC-P Image**

FOXP1 antibody detects FOXP1 protein at nucleus by immunohistochemical analysis.

Sample: Paraffin-embedded mouse spinal cord.

FOXP1 stained by FOXP1 antibody (GTX129252) diluted at 1:500.

Antigen Retrieval: Citrate buffer, pH 6.0, 15 min



For full product information, images and publications, please visit our [website](#).