

# Neurogenin 2 antibody

**Cat. No. GTX129258**

|                     |                   |
|---------------------|-------------------|
| <b>Host</b>         | Rabbit            |
| <b>Clonality</b>    | Polyclonal        |
| <b>Isotype</b>      | IgG               |
| <b>Applications</b> | WB, ICC/IF        |
| <b>Reactivity</b>   | Human, Mouse, Rat |

References ( 1 )

Package

100 µl, 25 µl

## Applications

### Application Note

\*Optimal dilutions/concentrations should be determined by the researcher.

| Suggested dilution | Recommended dilution |
|--------------------|----------------------|
| WB                 | 1:500-1:3000         |
| ICC/IF             | 1:100-1:1000         |

Not tested in other applications.

**Calculated MW** 29 kDa. ( [Note](#) )

## Properties

|                      |  |
|----------------------|--|
| <b>Form</b>          | Liquid   |
| <b>Buffer</b>        | PBS, 20% Glycerol  |
| <b>Preservative</b>  | 0.025% ProClin 300   |
| <b>Storage</b>       | Store as concentrated solution. Centrifuge briefly prior to opening vial. For short-term storage (1-2 weeks), store at 4°C. For long-term storage, aliquot and store at -20°C or below. Avoid multiple freeze-thaw cycles. |
| <b>Concentration</b> | 1.13 mg/ml (Please refer to the vial label for the specific concentration.)  |
| <b>Immunogen</b>     | Recombinant protein encompassing a sequence within the center region of human Neurogenin 2. The exact sequence is proprietary.   |
| <b>Purification</b>  | Purified by antigen-affinity chromatography.   |
| <b>Conjugation</b>   | Unconjugated   |

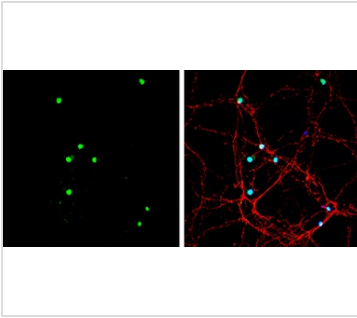
### Note

For laboratory research use only. Not for any clinical, therapeutic, or diagnostic use in humans or animals. Not for animal or human consumption.

Purchasers shall not, and agree not to enable third parties to, analyze, copy, reverse engineer or otherwise attempt to determine the structure or sequence of the product.



For full product information, images and publications, please visit our [website](#).

**DATA IMAGES**

**GTX129258 ICC/IF Image**

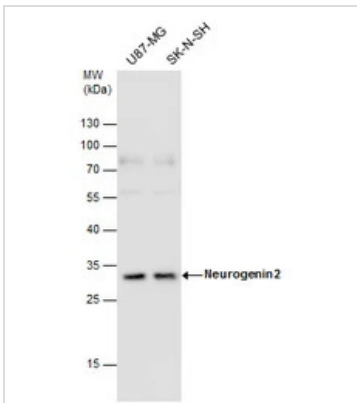
Neurogenin 2 antibody detects Neurogenin 2 protein by immunofluorescent analysis.

Sample: DIV9 rat E18 primary hippocampal neuron cells were fixed in 4% paraformaldehyde at RT for 15 min.

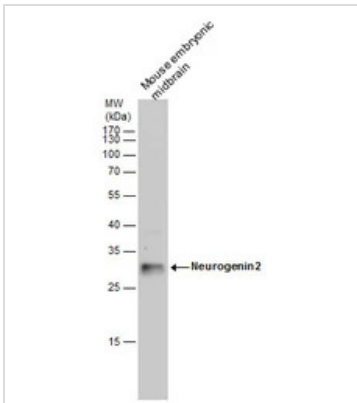
Green: Neurogenin 2 stained by Neurogenin 2 antibody (GTX129258) diluted at 1:500.

Red: beta Tubulin 3/ Tuj1, stained by beta Tubulin 3/ Tuj1 antibody [GT11710] (GTX631836) diluted at 1:500.

Blue: Fluoroshield with DAPI (GTX30920).


**GTX129258 WB Image**

Neurogenin 2 antibody detects Neurogenin 2 protein by western blot analysis. Various whole cell extracts (30 µg) were separated by 12% SDS-PAGE, and the membrane was blotted with Neurogenin 2 antibody (GTX129258) diluted by 1:2000.


**GTX129258 WB Image**

Neurogenin 2 antibody detects Neurogenin 2 protein by western blot analysis. Mouse tissue extracts (50 µg) was separated by 12 % SDS-PAGE, and the membrane was blotted with Neurogenin 2 antibody (GTX129258) diluted by 1:2000.



For full product information, images and publications, please visit our [website](https://www.genetex.com).