

# GABARAPL1 antibody

**Cat. No. GTX129277**

<b>Host</b>	Rabbit
<b>Clonality</b>	Polyclonal
<b>Isotype</b>	IgG
<b>Applications</b>	WB, ICC/IF
<b>Reactivity</b>	Human

**References** ( 1 )

**Package**

100 µl, 25 µl

## Applications

### Application Note

\*Optimal dilutions/concentrations should be determined by the researcher.

Suggested dilution	Recommended dilution
WB	1:500-1:3000
ICC/IF	1:100-1:1000

Not tested in other applications.

**Calculated MW** 14 kDa. ( [Note](#) )

## Properties

<b>Form</b>	Liquid
<b>Buffer</b>	PBS, 20% Glycerol
<b>Preservative</b>	0.025% ProClin 300
<b>Storage</b>	Store as concentrated solution. Centrifuge briefly prior to opening vial. For short-term storage (1-2 weeks), store at 4°C. For long-term storage, aliquot and store at -20°C or below. Avoid multiple freeze-thaw cycles.
<b>Concentration</b>	1 mg/ml (Please refer to the vial label for the specific concentration.)
<b>Immunogen</b>	Full length human GABARAPL1 Recombinant protein.
<b>Purification</b>	Purified by antigen-affinity chromatography.
<b>Conjugation</b>	Unconjugated

### Note

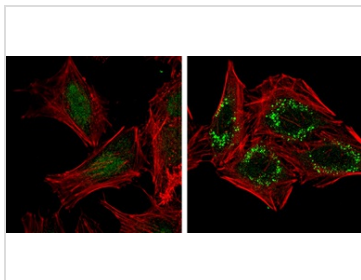
For laboratory research use only. Not for any clinical, therapeutic, or diagnostic use in humans or animals. Not for animal or human consumption.

Purchasers shall not, and agree not to enable third parties to, analyze, copy, reverse engineer or otherwise attempt to determine the structure or sequence of the product.



For full product information, images and publications, please visit our [website](#).

## DATA IMAGES

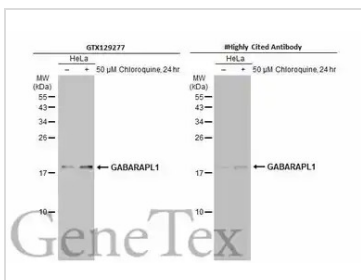


### GTX129277 ICC/IF Image

GABARAPL1 antibody detects GABARAPL1 protein at autophagosome by immunofluorescent analysis. Samples: HeLa cells mock (left) and treated with 50μM Chloroquine for 24 hr (right) were fixed in 4% paraformaldehyde at RT for 15 min.

Green: GABARAPL1 protein stained by GABARAPL1 antibody (GTX129277) diluted at 1:1000.

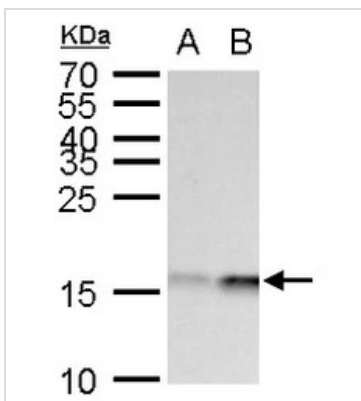
Red: Phalloidin, a F-actin marker.



### GTX129277 WB Image

Untreated (-) and treated (+) HeLa whole cell extracts (30 μg) were separated by 15% SDS-PAGE, and the membranes were blotted with GABARAPL1 antibody (GTX129277) diluted at 1:500 and competitor's antibody diluted at 1:500. The HRP-conjugated anti-rabbit IgG antibody (GTX213110-01) was used to detect the primary antibody.

\*The competitor is not affiliated with GeneTex and does not endorse this product.



### GTX129277 WB Image

GABARAPL1 antibody detects GABARAPL1 protein by western blot analysis.

A. 30 μg 293T whole cell lysate/extract

B. 30 μg whole cell lysate/extract of human GABARAPL1-transfected 293T cells

15 % SDS-PAGE

GABARAPL1 antibody (GTX129277) dilution: 1:1000



For full product information, images and publications, please visit our [website](https://www.genetex.com).