

ERCC1 antibody

Cat. No. GTX129282

Host	Rabbit
Clonality	Polyclonal
Isotype	IgG
Application	WB, ICC/IF, IHC-P
Reactivity	Human, Mouse, Rat

Reference (2)

★★★★☆ Review (2)

Package

100 µl, 25 µl

APPLICATION

Application Note

*Optimal dilutions/concentrations should be determined by the researcher.

Suggested dilution	Recommended dilution
WB	1:500-1:3000
ICC/IF	1:100-1:1000
IHC-P	1:100-1:1000

Not tested in other applications.

Calculated MW 33 kDa. ([Note](#))

PROPERTIES

Form	Liquid
Buffer	PBS, 20% Glycerol
Preservative	0.025% ProClin 300
Storage	Store as concentrated solution. Centrifuge briefly prior to opening vial. For short-term storage (1-2 weeks), store at 4°C. For long-term storage, aliquot and store at -20°C or below. Avoid multiple freeze-thaw cycles.
Concentration	1 mg/ml (Please refer to the vial label for the specific concentration.)
Immunogen	Recombinant protein encompassing a sequence within the center region of human ERCC1. The exact sequence is proprietary.
Purification	Purified by antigen-affinity chromatography.
Conjugation	Unconjugated

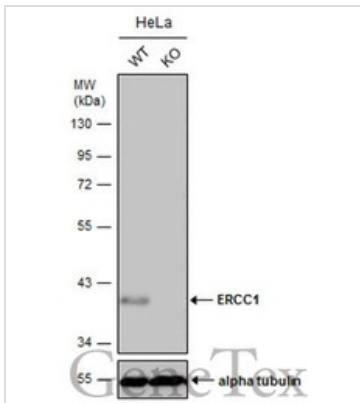
Note

For laboratory research use only. Not for any clinical, therapeutic, or diagnostic use in humans or animals. Not for animal or human consumption.

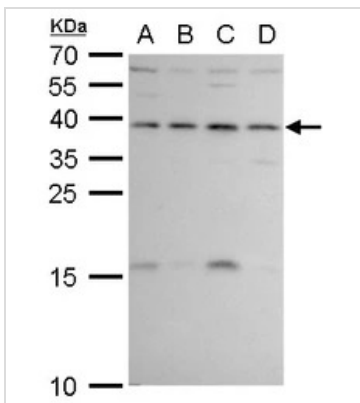
Purchasers shall not, and agree not to enable third parties to, analyze, copy, reverse engineer or otherwise attempt to determine the structure or sequence of the product.



For full product information, images and publications, please visit our [website](#).

DATA IMAGES

GTx129282 WB Image

Wild-type (WT) and ERCC1 knockout (KO) HeLa cell extracts (30 µg) were separated by 10% SDS-PAGE, and the membrane was blotted with ERCC1 antibody (GTx129282) diluted at 1:1000. The HRP-conjugated anti-rabbit IgG antibody (GTx213110-01) was used to detect the primary antibody.

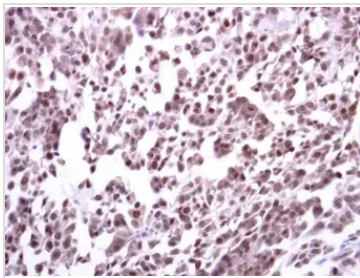

GTx129282 WB Image

ERCC1 antibody detects ERCC1 protein by western blot analysis.

- A. 30 µg 293T whole cell lysate/extract
- B. 30 µg A431 whole cell lysate/extract
- C. 30 µg HeLa whole cell lysate/extract
- D. 30 µg HepG2 whole cell lysate/extract

12 % SDS-PAGE

ERCC1 antibody (GTx129282) dilution: 1:1000

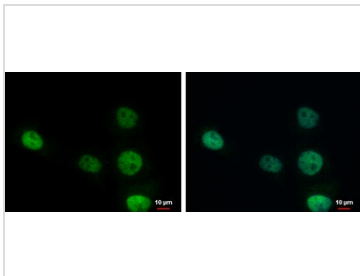

GTx129282 IHC-P Image

ERCC1 antibody detects ERCC1 protein at cytoplasm and nucleus on human lung carcinoma by immunohistochemical analysis.

Sample: Paraffin-embedded human lung carcinoma.

ERCC1 antibody (GTx129282) diluted at 1:250.

Antigen Retrieval: Trilogy™ (EDTA based, pH 8.0) buffer, 15min


GTx129282 ICC/IF Image

ERCC1 antibody detects ERCC1 protein at nucleus by immunofluorescent analysis.

Sample: A431 cells were fixed in 4% paraformaldehyde at RT for 15 min.

Green: ERCC1 protein stained by ERCC1 antibody (GTx129282) diluted at 1:1000.

Blue: Hoechst 33342 staining.



For full product information, images and publications, please visit our [website](https://www.genetex.com).