

RFC1 antibody

Cat. No. GTX129291

Host	Rabbit
Clonality	Polyclonal
Isotype	IgG
Applications	WB, ICC/IF, IP
Reactivity	Human

References (3)

Package

100 µl, 25 µl

Applications

Application Note

*Optimal dilutions/concentrations should be determined by the researcher.

Suggested dilution	Recommended dilution
WB	1:500-1:3000
ICC/IF	1:100-1:1000
IP	1:100-1:500

Not tested in other applications.

Calculated MW 128 kDa. ([Note](#))

Properties

Form	Liquid
Buffer	PBS, 1% BSA, 20% Glycerol
Preservative	0.025% ProClin 300
Storage	Store as concentrated solution. Centrifuge briefly prior to opening vial. For short-term storage (1-2 weeks), store at 4°C. For long-term storage, aliquot and store at -20°C or below. Avoid multiple freeze-thaw cycles.
Concentration	0.13 mg/ml (Please refer to the vial label for the specific concentration.)
Immunogen	Recombinant protein encompassing a sequence within the C-terminus region of human RFC1. The exact sequence is proprietary.
Purification	Purified by antigen-affinity chromatography.
Conjugation	Unconjugated

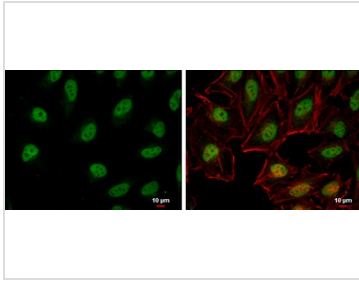
Note

For laboratory research use only. Not for any clinical, therapeutic, or diagnostic use in humans or animals. Not for animal or human consumption.

Purchasers shall not, and agree not to enable third parties to, analyze, copy, reverse engineer or otherwise attempt to determine the structure or sequence of the product.



For full product information, images and publications, please visit our [website](#).

DATA IMAGES

GTx129291 ICC/IF Image

RFC1 antibody detects RFC1 protein at nucleus by immunofluorescent analysis.

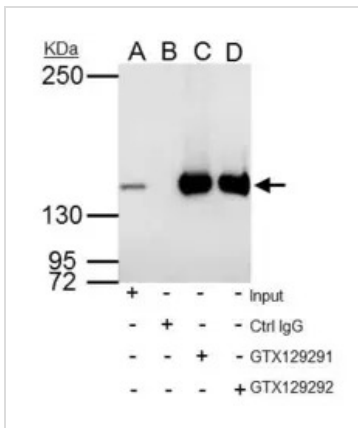
Sample: HeLa cells were fixed in 4% paraformaldehyde at RT for 15 min.

Green: RFC1 protein stained by RFC1 antibody (GTx129291) diluted at 1:1000.

Red: phalloidin, a cytoskeleton marker, diluted at 1:200.

Blue: Hoechst 33342 staining.

Scale bar = 10 μm.


GTx129291 IP Image

RFC1 antibody immunoprecipitates RFC1 protein in IP experiments.

IP samples: HeLa whole cell extract

A. 35 μg HeLa whole cell extract

B. Control with 4 μg of preimmune Rabbit IgG

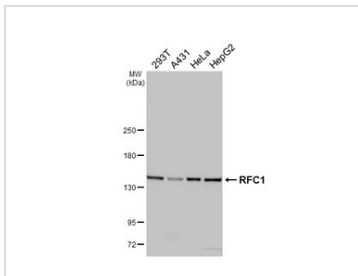
C. Immunoprecipitation of RFC1 protein by 4 μg RFC1 antibody (GTx129291)

D. Immunoprecipitation of RFC1 protein by 4 μg RFC1 antibody (GTx129292)

5 % SDS-PAGE

The immunoprecipitated RFC1 protein was detected by RFC1 antibody (GTx129291) diluted at 1:1500.

[EasyBlot anti-rabbit IgG (GTx221666-01) was used as a secondary reagent]


GTx129291 WB Image

Various whole cell extracts (30 μg) were separated by 5% SDS-PAGE, and the membrane was blotted with RFC1 antibody (GTx129291) diluted at 1:1000. The HRP-conjugated anti-rabbit IgG antibody (GTx213110-01) was used to detect the primary antibody.



For full product information, images and publications, please visit our [website](http://www.genetex.com).