

KLF9 antibody

Cat. No. GTX129316

Host	Rabbit
Clonality	Polyclonal
Isotype	IgG
Applications	WB, IHC-P, IP
Reactivity	Human, Mouse, Rat

References (2)

Package

100 µl, 25 µl

Applications

Application Note

*Optimal dilutions/concentrations should be determined by the researcher.

Suggested dilution	Recommended dilution
WB	1:500-1:3000
IHC-P	Assay dependent
IP	1:100-1:500

Not tested in other applications.

Calculated MW 27 kDa. ([Note](#))

Properties

Form	Liquid
Buffer	PBS, 20% Glycerol
Preservative	0.025% ProClin 300
Storage	Store as concentrated solution. Centrifuge briefly prior to opening vial. For short-term storage (1-2 weeks), store at 4°C. For long-term storage, aliquot and store at -20°C or below. Avoid multiple freeze-thaw cycles.
Concentration	1.78 mg/ml (Please refer to the vial label for the specific concentration.)
Immunogen	Full length human KLF9 Recombinant protein.
Purification	Purified by antigen-affinity chromatography.
Conjugation	Unconjugated

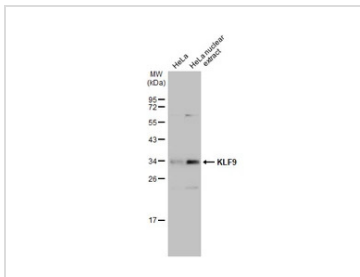
Note

For laboratory research use only. Not for any clinical, therapeutic, or diagnostic use in humans or animals. Not for animal or human consumption.

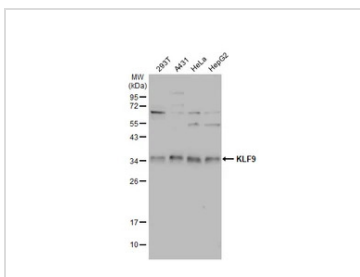
Purchasers shall not, and agree not to enable third parties to, analyze, copy, reverse engineer or otherwise attempt to determine the structure or sequence of the product.



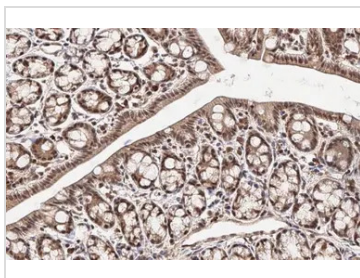
For full product information, images and publications, please visit our [website](#).

DATA IMAGES

GTX129316 WB Image

HeLa whole cell and nuclear extracts (30 µg) were separated by 12% SDS-PAGE, and the membrane was blotted with KLF9 antibody (GTX129316) diluted at 1:1000. The HRP-conjugated anti-rabbit IgG antibody (GTX213110-01) was used to detect the primary antibody.


GTX129316 WB Image

Various whole cell extracts (30 µg) were separated by 12% SDS-PAGE, and the membrane was blotted with KLF9 antibody (GTX129316) diluted at 1:1000. The HRP-conjugated anti-rabbit IgG antibody (GTX213110-01) was used to detect the primary antibody.

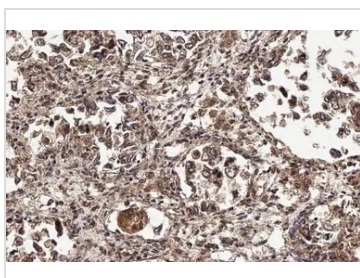

GTX129316 IHC-P Image

KLF9 antibody detects KLF9 protein at nucleus by immunohistochemical analysis.

Sample: Paraffin-embedded mouse colon.

KLF9 stained by KLF9 antibody (GTX129316) diluted at 1:500.

Antigen Retrieval: Citrate buffer, pH 6.0, 15 min


GTX129316 IHC-P Image

KLF9 antibody detects KLF9 protein at nucleus by immunohistochemical analysis.

Sample: Paraffin-embedded human ovarian cancer.

KLF9 stained by KLF9 antibody (GTX129316) diluted at 1:500.

Antigen Retrieval: Citrate buffer, pH 6.0, 15 min


GTX129316 IHC-P Image

KLF9 antibody detects KLF9 protein at nucleus by immunohistochemical analysis.

Sample: Paraffin-embedded rat colon.

KLF9 stained by KLF9 antibody (GTX129316) diluted at 1:500.

Antigen Retrieval: Citrate buffer, pH 6.0, 15 min



For full product information, images and publications, please visit our [website](http://www.genetex.com).