

## KLF9 antibody

Cat. No. GTX129316

|              |                   |
|--------------|-------------------|
| Host         | Rabbit            |
| Clonality    | Polyclonal        |
| Isotype      | IgG               |
| Applications | WB, IHC-P, IP     |
| Reactivity   | Human, Mouse, Rat |

References ( 2 )

Package

100 µl, 25 µl

## Applications

## Application Note

\*Optimal dilutions/concentrations should be determined by the researcher.

| Suggested dilution | Recommended dilution |
|--------------------|----------------------|
| WB                 | 1:500-1:3000         |
| IHC-P              | Assay dependent      |
| IP                 | 1:100-1:500          |

Not tested in other applications.

Calculated MW 27 kDa. ( [Note](#) )

## Properties

|               |  |
|---------------|--|
| Form          | Liquid   |
| Buffer        | PBS, 20% Glycerol  |
| Preservative  | 0.025% ProClin 300   |
| Storage       | Store as concentrated solution. Centrifuge briefly prior to opening vial. For short-term storage (1-2 weeks), store at 4°C. For long-term storage, aliquot and store at -20°C or below. Avoid multiple freeze-thaw cycles. |
| Concentration | 1.78 mg/ml (Please refer to the vial label for the specific concentration.)  |
| Immunogen     | Full length human KLF9 Recombinant protein.  |
| Purification  | Purified by antigen-affinity chromatography.   |
| Conjugation   | Unconjugated   |

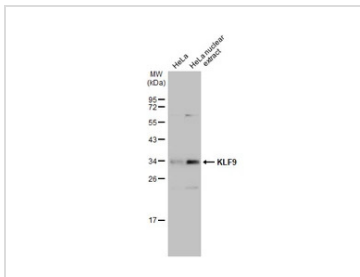
## Note

For laboratory research use only. Not for any clinical, therapeutic, or diagnostic use in humans or animals. Not for animal or human consumption.

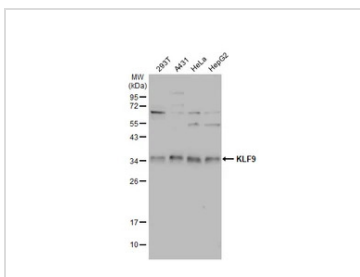
Purchasers shall not, and agree not to enable third parties to, analyze, copy, reverse engineer or otherwise attempt to determine the structure or sequence of the product.



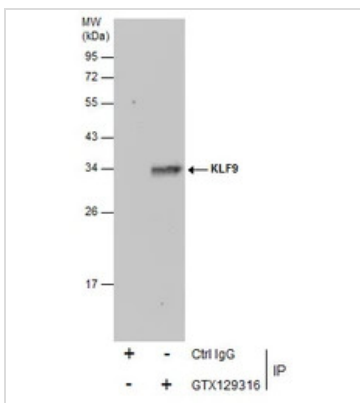
For full product information, images and publications, please visit our [website](#).

**DATA IMAGES**

**GTK129316 WB Image**

HeLa whole cell and nuclear extracts (30 µg) were separated by 12% SDS-PAGE, and the membrane was blotted with KLF9 antibody (GTK129316) diluted at 1:1000. The HRP-conjugated anti-rabbit IgG antibody (GTK213110-01) was used to detect the primary antibody.


**GTK129316 WB Image**

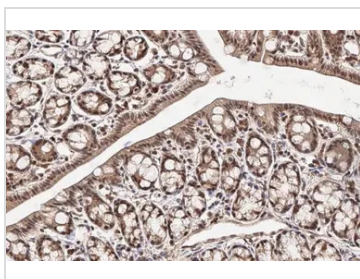
Various whole cell extracts (30 µg) were separated by 12% SDS-PAGE, and the membrane was blotted with KLF9 antibody (GTK129316) diluted at 1:1000. The HRP-conjugated anti-rabbit IgG antibody (GTK213110-01) was used to detect the primary antibody.


**GTK129316 IP Image**

Immunoprecipitation of KLF9 protein from HeLa whole cell extracts using 5 µg of KLF9 antibody (GTK129316).

Western blot analysis was performed using KLF9 antibody (GTK129316).

EasyBlot anti-Rabbit IgG (GTK221666-01) was used as a secondary reagent.


**GTK129316 IHC-P Image**

KLF9 antibody detects KLF9 protein at nucleus by immunohistochemical analysis.

Sample: Paraffin-embedded mouse colon.

KLF9 stained by KLF9 antibody (GTK129316) diluted at 1:500.

Antigen Retrieval: Citrate buffer, pH 6.0, 15 min



For full product information, images and publications, please visit our [website](https://www.genetex.com).