

## alpha 1a Adrenergic Receptor antibody

Cat. No. GTX12935

Host	Rabbit
Clonality	Polyclonal
Isotype	IgG
Application	ICC/IF, IHC-P
Reactivity	Human, Mouse, Rat, Rabbit, Sheep, Bovine, Dog, Hamster, Pig, Monkey, Horse

Package

25 µg

## APPLICATION

## Application Note

\*Optimal dilutions/concentrations should be determined by the researcher.

Suggested dilution	Recommended dilution
ICC/IF	Assay dependent
IHC-P	3 µg/ml

Not tested in other applications.

Calculated MW 51 kDa. ( [Note](#) )

## PROPERTIES

Form	Liquid
Buffer	PBS
Preservative	0.1% Sodium azide
Storage	Store as concentrated solution. Centrifuge briefly prior to opening vial. For short-term storage (1-2 weeks), store at 4°C. For long-term storage, aliquot and store at -20°C or below. Avoid multiple freeze-thaw cycles.
Concentration	1 mg/ml (Please refer to the vial label for the specific concentration.)
Immunogen	Synthetic 16 amino acid peptide from 3rd cytoplasmic domain of human ADRA1A.
Purification	Purified by affinity chromatography
Conjugation	Unconjugated

## Note

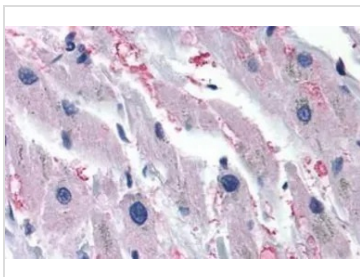
For laboratory research use only. Not for any clinical, therapeutic, or diagnostic use in humans or animals. Not for animal or human consumption.

Purchasers shall not, and agree not to enable third parties to, analyze, copy, reverse engineer or otherwise attempt to determine the structure or sequence of the product.



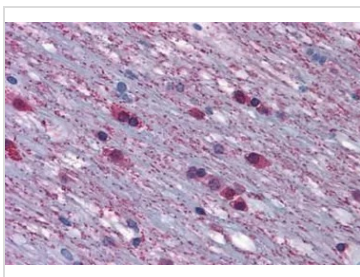
For full product information, images and publications, please visit our [website](#).

## DATA IMAGES



### GTx12935 IHC-P Image

IHC-P analysis of human heart, heart failure tissue using GTx12935 alpha 1a Adrenergic Receptor antibody.  
Antigen retrieval : Heat-induced antigen retrieval



### GTx12935 IHC-P Image

IHC-P analysis of brain cerebellum white matter tissue using GTx12935 alpha 1a Adrenergic Receptor antibody.



For full product information, images and publications, please visit our [website](#).