

## AXL antibody

Cat. No. GTX129407

Host	Rabbit
Clonality	Polyclonal
Isotype	IgG
Application	WB, IHC-P, ELISA
Reactivity	Human

Reference ( 3 )

Package

100 µl, 25 µl

## APPLICATION

## Application Note

\*Optimal dilutions/concentrations should be determined by the researcher.

Suggested dilution	Recommended dilution
WB	1:500-1:3000
IHC-P	1:100-1:1000
ELISA	1:-1:10000

Not tested in other applications.

Calculated MW 98 kDa. ( [Note](#) )

## PROPERTIES

Form	Liquid
Buffer	PBS, 20% Glycerol
Preservative	0.025% ProClin 300
Storage	Store as concentrated solution. Centrifuge briefly prior to opening vial. For short-term storage (1-2 weeks), store at 4°C. For long-term storage, aliquot and store at -20°C or below. Avoid multiple freeze-thaw cycles.
Concentration	0.6 mg/ml (Please refer to the vial label for the specific concentration.)
Immunogen	Recombinant protein encompassing a sequence within the center region of human AXL. The exact sequence is proprietary.
Purification	Purified by antigen-affinity chromatography.
Conjugation	Unconjugated

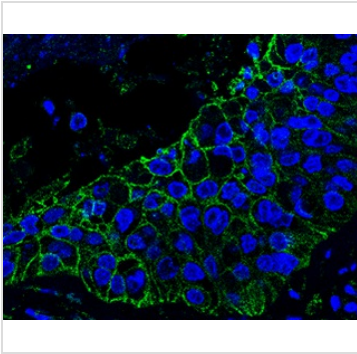
## Note

For laboratory research use only. Not for any clinical, therapeutic, or diagnostic use in humans or animals. Not for animal or human consumption.

Purchasers shall not, and agree not to enable third parties to, analyze, copy, reverse engineer or otherwise attempt to determine the structure or sequence of the product.



For full product information, images and publications, please visit our [website](#).

**DATA IMAGES**

**GTX129407 IHC-P Image**

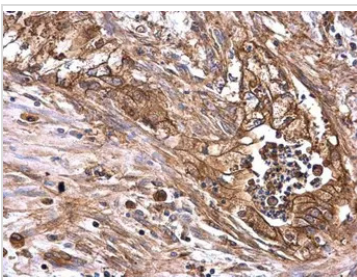
AXL antibody detects AXL protein at cell membrane in human lung cancer by immunohistochemical analysis.

Sample: Paraffin-embedded human lung cancer.

Green: AXL antibody (GTX129407) diluted at 1:200. The signal was developed using goat anti-rabbit IgG antibody (Dylight488) (GTX213110-04).

Blue: Nuclear staining with Hoechst 33342.

Antigen Retrieval: Citrate buffer, pH 6.0, 15 min

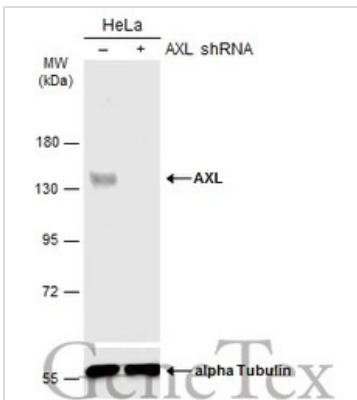

**GTX129407 IHC-P Image**

AXL antibody detects AXL protein at membrane on human colon carcinoma by immunohistochemical analysis.

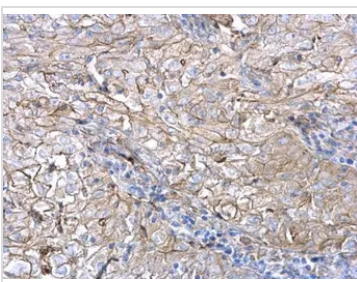
Sample: Paraffin-embedded human colon carcinoma.

AXL antibody (GTX129407) dilution: 1:500.

Antigen Retrieval: Trilogy™ (EDTA based, pH 8.0) buffer, 15min


**GTX129407 WB Image**

Non-transfected (-) and transfected (+) HeLa whole cell extracts (60 µg) were separated by 7.5% SDS-PAGE, and the membrane was blotted with AXL antibody (GTX129407) diluted at 1:500. The HRP-conjugated anti-rabbit IgG antibody (GTX213110-01) was used to detect the primary antibody.


**GTX129407 IHC-P Image**

AXL antibody detects AXL protein at membrane on human non-small cell lung carcinoma by immunohistochemical analysis.

Sample: Paraffin-embedded human non-small cell lung carcinoma.

AXL antibody (GTX129407) dilution: 1:500.

Antigen Retrieval: Trilogy™ (EDTA based, pH 8.0) buffer, 15min



For full product information, images and publications, please visit our [website](https://www.genetex.com).