

SP3 antibody

Cat. No. GTX129426

Host	Rabbit
Clonality	Polyclonal
Isotype	IgG
Application	WB, ICC/IF, IHC-P, IP
Reactivity	Human

Reference (1)
 Package
 100 µl, 25 µl

APPLICATION

Application Note

*Optimal dilutions/concentrations should be determined by the researcher.

Suggested dilution	Recommended dilution
WB	1:500-1:3000
ICC/IF	1:100-1:1000
IHC-P	1:100-1:1000
IP	1:100-1:500

Not tested in other applications.

Calculated MW 82 kDa. ([Note](#))

PROPERTIES

Form	Liquid
Buffer	PBS, 1% BSA, 20% Glycerol
Preservative	0.025% ProClin 300
Storage	Store as concentrated solution. Centrifuge briefly prior to opening vial. For short-term storage (1-2 weeks), store at 4°C. For long-term storage, aliquot and store at -20°C or below. Avoid multiple freeze-thaw cycles.
Concentration	0.2 mg/ml (Please refer to the vial label for the specific concentration.)
Immunogen	Recombinant protein encompassing a sequence within the N-terminus region of human SP3. The exact sequence is proprietary.
Purification	Purified by antigen-affinity chromatography.
Conjugation	Unconjugated

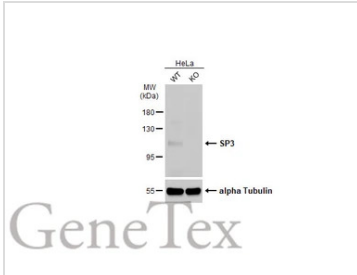


For full product information, images and publications, please visit our [website](#).

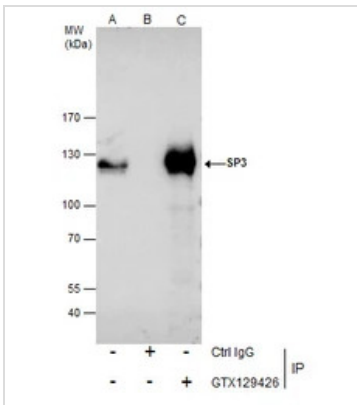
For laboratory research use only. Not for any clinical, therapeutic, or diagnostic use in humans or animals. Not for animal or human consumption.

Note

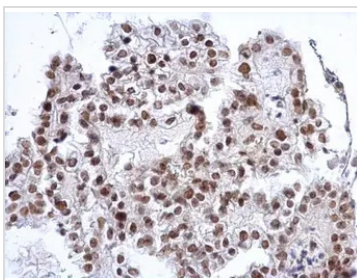
Purchasers shall not, and agree not to enable third parties to, analyze, copy, reverse engineer or otherwise attempt to determine the structure or sequence of the product.

DATA IMAGES

GTX129426 WB Image

Wild-type (WT) and SP3 knockout (KO) HeLa cell extracts (30 µg) were separated by 7.5% SDS-PAGE, and the membrane was blotted with SP3 antibody (GTX129426) diluted at 1:1000. The HRP-conjugated anti-rabbit IgG antibody (GTX213110-01) was used to detect the primary antibody. Corresponding RNA expression data for the same cell lines are based on Human Protein Atlas program.


GTX129426 IP Image

Immunoprecipitation of SP3 protein from Jurkat nuclear extracts using 5 µg of SP3 antibody (GTX129426). Western blot analysis was performed using SP3 antibody (GTX129426) diluted at 1:500. EasyBlot anti-Rabbit IgG (GTX221666-01) was used as a secondary reagent.

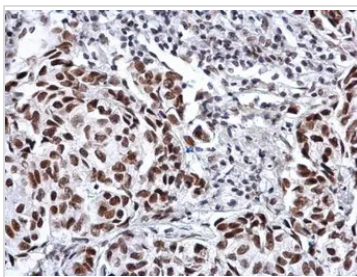

GTX129426 IHC-P Image

SP3 antibody detects SP3 protein at nucleus on human ovarian carcinoma by immunohistochemical analysis.

Sample: Paraffin-embedded human ovarian carcinoma.

SP3 antibody (GTX129426) dilution: 1:1000.

Antigen Retrieval: Trilogy™ (EDTA based, pH 8.0) buffer, 15min


GTX129426 IHC-P Image

SP3 antibody detects SP3 protein at nucleus on human breast carcinoma by immunohistochemical analysis.

Sample: Paraffin-embedded human breast carcinoma.

SP3 antibody (GTX129426) dilution: 1:1000.

Antigen Retrieval: Trilogy™ (EDTA based, pH 8.0) buffer, 15min



For full product information, images and publications, please visit our [website](https://www.genetex.com).