

ARID1A antibody

Cat. No. GTX129433

Host	Rabbit
Clonality	Polyclonal
Isotype	IgG
Applications	WB, ICC/IF, IHC-P, IP, ChIP assay
Reactivity	Human, Mouse

References (6)

Package

100 µl, 25 µl

Applications

Application Note

*Optimal dilutions/concentrations should be determined by the researcher.

Suggested dilution	Recommended dilution
WB	1:500-1:3000
ICC/IF	1:100-1:1000
IHC-P	1:100-1:1000
IP	1:100-1:500
ChIP assay	Assay dependent

Not tested in other applications.

Calculated MW 242 kDa. ([Note](#))

Properties

Form	Liquid
Buffer	PBS, 20% Glycerol
Preservative	0.025% ProClin 300
Storage	Store as concentrated solution. Centrifuge briefly prior to opening vial. For short-term storage (1-2 weeks), store at 4°C. For long-term storage, aliquot and store at -20°C or below. Avoid multiple freeze-thaw cycles.
Concentration	0.53 mg/ml (Please refer to the vial label for the specific concentration.)
Immunogen	Recombinant protein encompassing a sequence within the C-terminus region of human ARID1A. The exact sequence is proprietary.
Purification	Purified by antigen-affinity chromatography.
Conjugation	Unconjugated



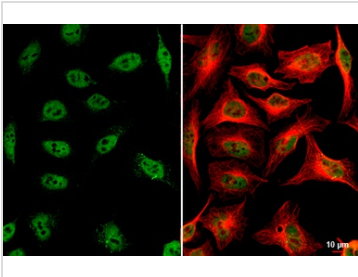
For full product information, images and publications, please visit our [website](#).

For laboratory research use only. Not for any clinical, therapeutic, or diagnostic use in humans or animals. Not for animal or human consumption.

Note

Purchasers shall not, and agree not to enable third parties to, analyze, copy, reverse engineer or otherwise attempt to determine the structure or sequence of the product.

DATA IMAGES



GTX129433 ICC/IF Image

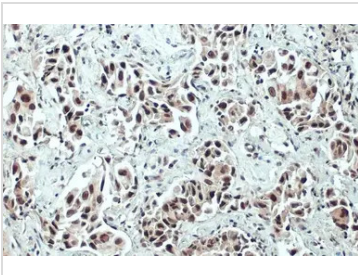
ARID1A antibody detects ARID1A protein at nucleus by immunofluorescent analysis.

Sample: HeLa cells were fixed in 4% paraformaldehyde at RT for 15 min.

Green: ARID1A stained by ARID1A antibody (GTX129433) diluted at 1:500.

Red: alpha Tubulin, a cytoskeleton marker, stained by alpha Tubulin antibody [GT114] (GTX628802) diluted at 1:1000.

Scale bar= 10µm.



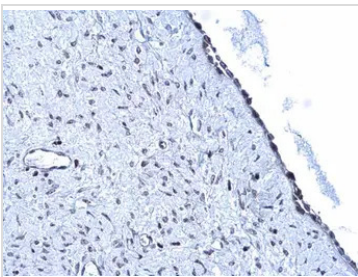
GTX129433 IHC-P Image

ARID1A antibody detects ARID1A protein at nucleus by immunohistochemical analysis.

Sample: Paraffin-embedded human lung cancer.

ARID1A stained by ARID1A antibody (GTX129433) diluted at 1:500.

Antigen Retrieval: Citrate buffer, pH 6.0, 15 min



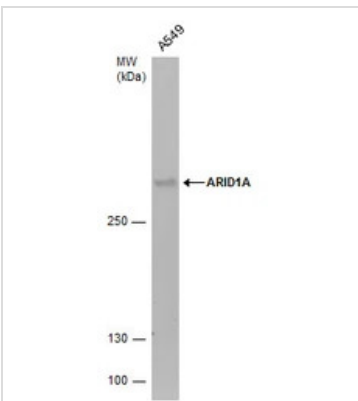
GTX129433 IHC-P Image

ARID1A antibody detects ARID1A protein at nucleus on human endometrial carcinoma by immunohistochemical analysis.

Sample: Paraffin-embedded human endometrial carcinoma.

ARID1A antibody (GTX129433) diluted at 1:500.

Antigen Retrieval: Trilogy™ (EDTA based, pH 8.0) buffer, 15min



GTX129433 WB Image

ARID1A antibody detects ARID1A protein by western blot analysis. Whole cell extracts (30 µg) was separated by 5% SDS-PAGE, and the membrane was blotted with ARID1A antibody (GTX129433) diluted by 1:1000.



For full product information, images and publications, please visit our [website](https://www.genetex.com).