

Histone H2B antibody

Cat. No. GTX129434

Host	Rabbit
Clonality	Polyclonal
Isotype	IgG
Applications	WB
Reactivity	Human, Mouse

References (2)

Package

100 µl, 25 µl

Applications

Application Note

*Optimal dilutions/concentrations should be determined by the researcher.

Suggested dilution	Recommended dilution
WB	1:500-1:3000

Not tested in other applications.

Properties

Form	Liquid
Buffer	PBS, 20% Glycerol
Preservative	0.025% ProClin 300
Storage	Store as concentrated solution. Centrifuge briefly prior to opening vial. For short-term storage (1-2 weeks), store at 4°C. For long-term storage, aliquot and store at -20°C or below. Avoid multiple freeze-thaw cycles.
Concentration	1 mg/ml (Please refer to the vial label for the specific concentration.)
Immunogen	Full length human Histone H2B Recombinant protein.
Purification	Purified by antigen-affinity chromatography.
Conjugation	Unconjugated

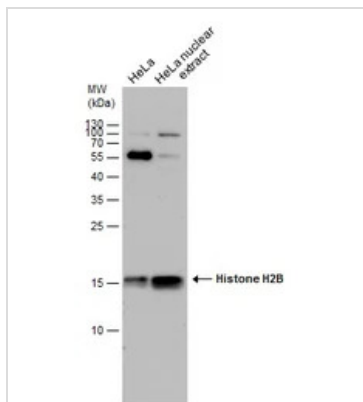
Note

For laboratory research use only. Not for any clinical, therapeutic, or diagnostic use in humans or animals. Not for animal or human consumption.

Purchasers shall not, and agree not to enable third parties to, analyze, copy, reverse engineer or otherwise attempt to determine the structure or sequence of the product.

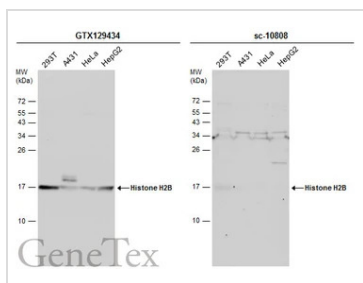
For full product information, images and publications, please visit our [website](#).

DATA IMAGES



GTX129434 WB Image

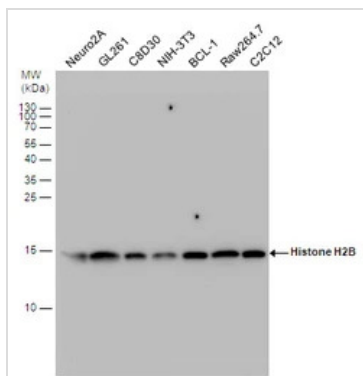
HeLa whole cell and nuclear extracts (30 µg) were separated by 15% SDS-PAGE, and the membrane was blotted with Histone H2B antibody (GTX129434) diluted at 1:1000.



GTX129434 WB Image

Various whole cell extracts (30 µg) were separated by 15% SDS-PAGE, and the membranes were blotted with Histone H2B antibody (GTX129434) diluted at 1:500 and competitor's antibody (sc-10808) diluted at 1:500. The HRP-conjugated anti-rabbit IgG antibody (GTX213110-01) was used to detect the primary antibody.

*The competitor is not affiliated with GeneTex and does not endorse this product.



GTX129434 WB Image

Histone H2B antibody detects Histone H2B protein by western blot analysis. Various whole cell extracts (30 µg) were separated by 15% SDS-PAGE, and the membrane was blotted with Histone H2B antibody (GTX129434) diluted by 1:1000.



For full product information, images and publications, please visit our [website](http://www.genetex.com).