

## Ikaros antibody

Cat. No. GTX129438

|              |                    |
|--------------|--------------------|
| Host         | Rabbit             |
| Clonality    | Polyclonal         |
| Isotype      | IgG                |
| Applications | WB, IP, ChIP assay |
| Reactivity   | Human              |

References ( 3 )

Package

100 µl, 25 µl

## Applications

## Application Note

\*Optimal dilutions/concentrations should be determined by the researcher.

| Suggested dilution | Recommended dilution |
|--------------------|----------------------|
| WB                 | 1:500-1:3000         |
| IP                 | 1:100-1:500          |
| ChIP assay         | Assay dependent      |

Not tested in other applications.

Calculated MW 58 kDa. ( [Note](#) )

## Properties

|               |  |
|---------------|--|
| Form          | Liquid   |
| Buffer        | PBS, 1% BSA, 20% Glycerol  |
| Preservative  | 0.025% ProClin 300   |
| Storage       | Store as concentrated solution. Centrifuge briefly prior to opening vial. For short-term storage (1-2 weeks), store at 4°C. For long-term storage, aliquot and store at -20°C or below. Avoid multiple freeze-thaw cycles. |
| Concentration | 0.38 mg/ml (Please refer to the vial label for the specific concentration.)  |
| Immunogen     | Recombinant protein encompassing a sequence within the N-terminus region of human Ikaros. The exact sequence is proprietary.   |
| Purification  | Purified by antigen-affinity chromatography.   |
| Conjugation   | Unconjugated   |

## Note

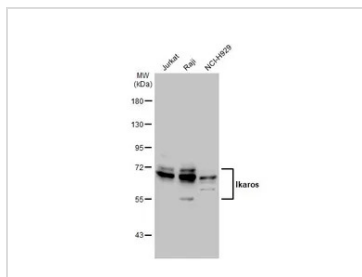
For laboratory research use only. Not for any clinical, therapeutic, or diagnostic use in humans or animals. Not for animal or human consumption.

Purchasers shall not, and agree not to enable third parties to, analyze, copy, reverse engineer or otherwise attempt to determine the structure or sequence of the product.



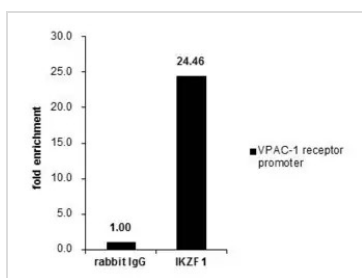
For full product information, images and publications, please visit our [website](#).

## DATA IMAGES



### GTX129438 WB Image

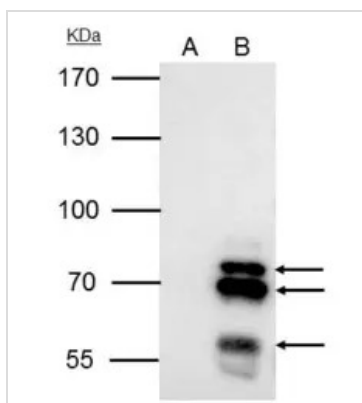
Various whole cell extracts (30 µg) were separated by 7.5% SDS-PAGE, and the membrane was blotted with Ikaros antibody (GTX129438) diluted at 1:1000. The HRP-conjugated anti-rabbit IgG antibody (GTX213110-01) was used to detect the primary antibody.



### GTX129438 ChIP assay Image

Cross-linked ChIP was performed with Jurkat chromatin extract and 5 µg of either control rabbit IgG or anti-IKZF1 antibody. The precipitated DNA was detected by PCR with primer set targeting to VPAC-1 receptor promoter.

ChIP experiment and primer designs are based on [J Biol Chem. 2007 Jan 26;282\(4\):2538-47](https://pubs.biolchem.org/doi/10.1016/j.jbc.2006.11.038).



### GTX129438 IP Image

IKZF1 antibody immunoprecipitates IKZF1 protein in IP experiments.

IP samples: Raji whole cell extract

A. Control with 4 µg of preimmune Rabbit IgG

B. Immunoprecipitation of IKZF1 protein by 4 µg IKZF1 antibody (GTX129438)

7.5 % SDS-PAGE

The immunoprecipitated IKZF1 protein was detected by IKZF1 antibody (GTX129438) diluted at 1:500.

[EasyBlot anti-rabbit IgG (GTX221666-01) was used as a secondary reagent]



For full product information, images and publications, please visit our [website](https://www.genetex.com).