

VIP antibody

Cat. No. GTX129461

Host	Rabbit
Clonality	Polyclonal
Isotype	IgG
Applications	WB, IHC-P, IHC-Fr
Reactivity	Human, Mouse, Rat

References (4)

Package

100 µl, 25 µl

Applications

Application Note

*Optimal dilutions/concentrations should be determined by the researcher.

Suggested dilution	Recommended dilution
WB	1:500-1:3000
IHC-P	1:100-1:1000
IHC-Fr	1:100-1:1000

Not tested in other applications.

Calculated MW 19 kDa. ([Note](#))

Properties

Form	Liquid
Buffer	PBS, 1% BSA, 20% Glycerol
Preservative	0.025% ProClin 300
Storage	Store as concentrated solution. Centrifuge briefly prior to opening vial. For short-term storage (1-2 weeks), store at 4°C. For long-term storage, aliquot and store at -20°C or below. Avoid multiple freeze-thaw cycles.
Concentration	0.16 mg/ml (Please refer to the vial label for the specific concentration.)
Immunogen	Carrier-protein conjugated synthetic peptide encompassing a sequence within the C-terminus region of human VIP. The exact sequence is proprietary.
Purification	Purified by antigen-affinity chromatography.
Conjugation	Unconjugated

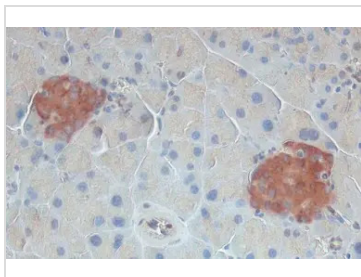
Note

For laboratory research use only. Not for any clinical, therapeutic, or diagnostic use in humans or animals. Not for animal or human consumption.

Purchasers shall not, and agree not to enable third parties to, analyze, copy, reverse engineer or otherwise attempt to determine the structure or sequence of the product.



For full product information, images and publications, please visit our [website](#).

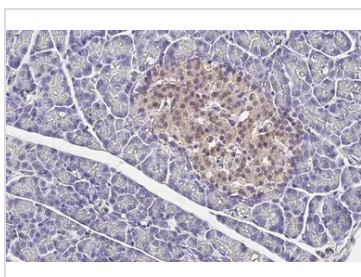
DATA IMAGES

GTX129461 IHC-P Image

VIP antibody detects VIP protein at cytoplasm by immunohistochemical analysis.

Sample: Paraffin-embedded mouse pancreas.

VIP stained by VIP antibody (GTX129461) diluted at 1:500.

Antigen Retrieval: Citrate buffer, pH 6.0, 15 min

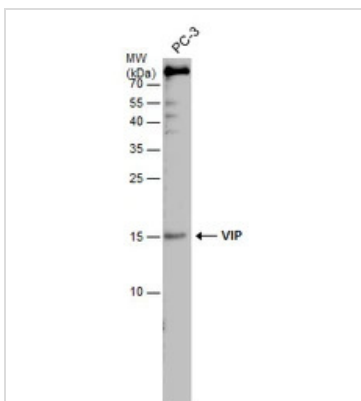

GTX129461 IHC-P Image

VIP antibody detects VIP protein at cytoplasm by immunohistochemical analysis.

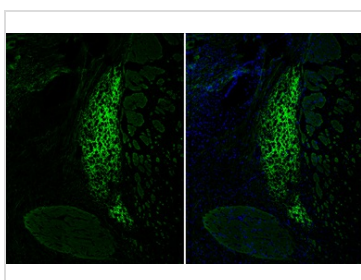
Sample: Paraffin-embedded rat pancreas.

VIP stained by VIP antibody (GTX129461) diluted at 1:500.

Antigen Retrieval: Citrate buffer, pH 6.0, 15 min


GTX129461 WB Image

VIP antibody detects VIP protein by western blot analysis. Whole cell extracts (30 µg) was separated by 15% SDS-PAGE, and the membrane was blotted with VIP antibody (GTX129461) at a dilution of 1:1000.


GTX129461 IHC-Fr Image

VIP antibody detects VIP protein by immunohistochemical analysis.

Sample: Frozen-sectioned mouse thalamus.

Green: VIP stained by VIP antibody (GTX129461) diluted at 1:250.

Blue: Fluoroshield with DAPI (GTX30920).



For full product information, images and publications, please visit our [website](https://www.genetex.com).