

TRRAP antibody

Cat. No. GTX129505

Host	Rabbit
Clonality	Polyclonal
Isotype	IgG
Applications	WB, ICC/IF, IP, ChIP assay
Reactivity	Human

Package
100 µl, 25 µl

Applications

Application Note

*Optimal dilutions/concentrations should be determined by the researcher.

Suggested dilution	Recommended dilution
WB	1:500-1:3000
ICC/IF	1:100-1:1000
IP	1:100-1:500
ChIP assay	Assay dependent

Not tested in other applications.

Calculated MW 438 kDa. ([Note](#))

Properties

Form	Liquid
Buffer	PBS, 20% Glycerol
Preservative	0.025% ProClin 300
Storage	Store as concentrated solution. Centrifuge briefly prior to opening vial. For short-term storage (1-2 weeks), store at 4°C. For long-term storage, aliquot and store at -20°C or below. Avoid multiple freeze-thaw cycles.
Concentration	1 mg/ml (Please refer to the vial label for the specific concentration.)
Immunogen	Recombinant protein encompassing a sequence within the N-terminus region of human TRRAP. The exact sequence is proprietary.
Purification	Purified by antigen-affinity chromatography.
Conjugation	Unconjugated



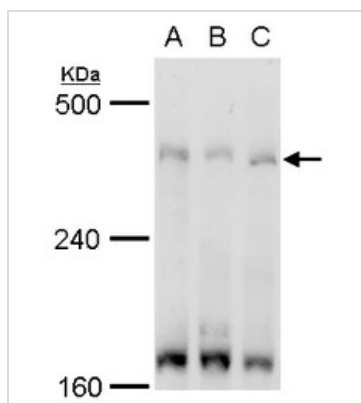
For full product information, images and publications, please visit our [website](#).

For laboratory research use only. Not for any clinical, therapeutic, or diagnostic use in humans or animals. Not for animal or human consumption.

Note

Purchasers shall not, and agree not to enable third parties to, analyze, copy, reverse engineer or otherwise attempt to determine the structure or sequence of the product.

DATA IMAGES



GTx129505 WB Image

TRRAP antibody detects TRRAP protein by western blot analysis.

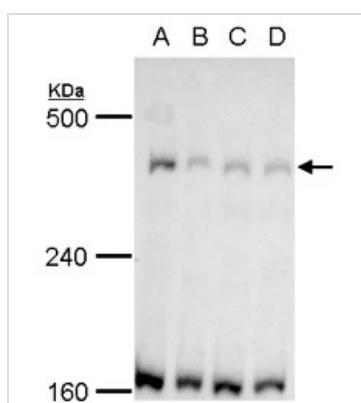
A. 30 μ g Jurkat whole cell lysate/extract

B. 30 μ g Raji whole cell lysate/extract

C. 30 μ g NCI-H929 whole cell lysate/extract

5 % SDS-PAGE

TRRAP antibody (GTx129505) dilution: 1:500



GTx129505 WB Image

TRRAP antibody detects TRRAP protein by western blot analysis.

A. 30 μ g 293T whole cell lysate/extract

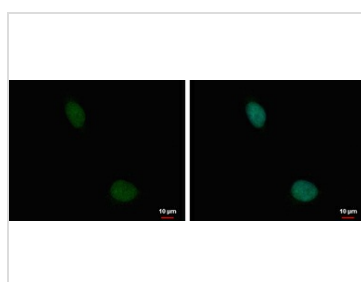
B. 30 μ g A431 whole cell lysate/extract

C. 30 μ g HeLa whole cell lysate/extract

D. 30 μ g HepG2 whole cell lysate/extract

5 % SDS-PAGE

TRRAP antibody (GTx129505) dilution: 1:500



GTx129505 ICC/IF Image

TRRAP antibody detects TRRAP protein at nucleus by immunofluorescent analysis.

Sample: HeLa cells were fixed in 4% paraformaldehyde at RT for 15 min.

Green: TRRAP protein stained by TRRAP antibody (GTx129505) diluted at 1:1000.

Blue: Hoechst 33342 staining.



For full product information, images and publications, please visit our [website](https://www.genetex.com).