

VPS34 antibody

Cat. No. GTX129528

Host	Rabbit
Clonality	Polyclonal
Isotype	IgG
Application	WB, IP
Reactivity	Human

Reference (5)

Package

100 µl, 25 µl

APPLICATION

Application Note

*Optimal dilutions/concentrations should be determined by the researcher.

Suggested dilution	Recommended dilution
WB	1:500-1:10000
IP	1:100-1:500

Note : As is commonly seen with membrane proteins, significant hydrophobicity can lead to aggregation following boiling of samples prior to SDS-PAGE and subsequent western blotting. We recommend to avoid boiling in this case.

Not tested in other applications.

Calculated MW 102 kDa. ([Note](#))

PROPERTIES

Form	Liquid
Buffer	PBS, 20% Glycerol
Preservative	0.025% ProClin 300
Storage	Store as concentrated solution. Centrifuge briefly prior to opening vial. For short-term storage (1-2 weeks), store at 4°C. For long-term storage, aliquot and store at -20°C or below. Avoid multiple freeze-thaw cycles.
Concentration	1 mg/ml (Please refer to the vial label for the specific concentration.)
Immunogen	Recombinant protein encompassing a sequence within the N-terminus region of human VPS34. The exact sequence is proprietary.
Purification	Purified by antigen-affinity chromatography.
Conjugation	Unconjugated

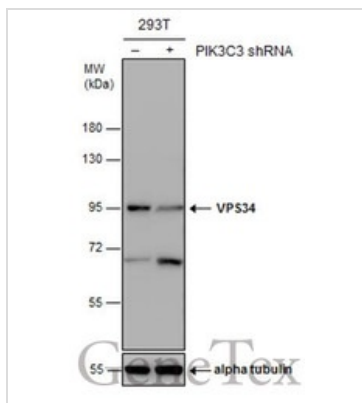


For full product information, images and publications, please visit our [website](#).

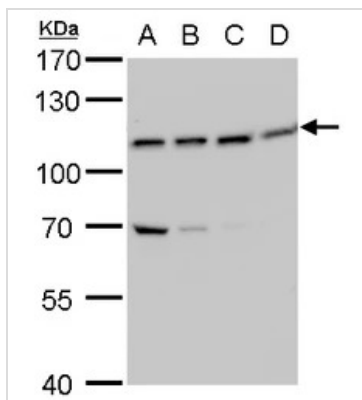
For laboratory research use only. Not for any clinical, therapeutic, or diagnostic use in humans or animals. Not for animal or human consumption.

Note

Purchasers shall not, and agree not to enable third parties to, analyze, copy, reverse engineer or otherwise attempt to determine the structure or sequence of the product.

DATA IMAGES

GTx129528 WB Image

Non-transfected (–) and transfected (+) 293T whole cell extracts (30 µg) were separated by 7.5% SDS-PAGE, and the membrane was blotted with VPS34 antibody (GTx129528) diluted at 1:1000.

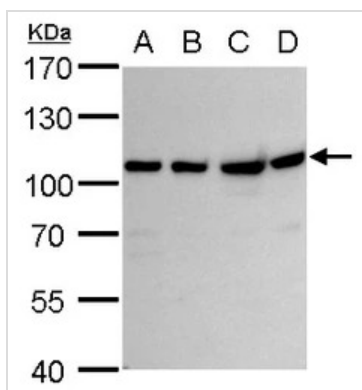

GTx129528 WB Image

VPS34 antibody detects VPS34 protein by western blot analysis.

- A. 30 µg 293T whole cell lysate/extract
- B. 30 µg A431 whole cell lysate/extract
- C. 30 µg HeLa whole cell lysate/extract
- D. 30 µg HepG2 whole cell lysate/extract

7.5 % SDS-PAGE

VPS34 antibody (GTx129528) dilution: 1:1000


GTx129528 WB Image

VPS34 antibody detects VPS34 protein by western blot analysis.

- A. 30 µg U87-MG whole cell lysate/extract
- B. 30 µg SK-N-SH whole cell lysate/extract
- C. 30 µg IMR32 whole cell lysate/extract
- D. 30 µg SK-N-AS whole cell lysate/extract

7.5 % SDS-PAGE

VPS34 antibody (GTx129528) dilution: 1:1000



For full product information, images and publications, please visit our [website](http://www.genetex.com).