

Histone H3 antibody

Cat. No. GTX129546

Host	Rabbit
Clonality	Polyclonal
Isotype	IgG
Application	WB, IHC-P
Reactivity	Human, Mouse, Rat, Drosophila

Reference (1)

Package

100 µl, 25 µl

APPLICATION

Application Note

*Optimal dilutions/concentrations should be determined by the researcher.

Suggested dilution	Recommended dilution
WB	1:500-1:3000
IHC-P	1:100-1:1000

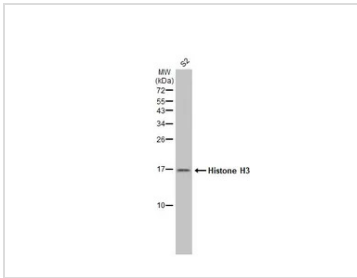
Not tested in other applications.

PROPERTIES

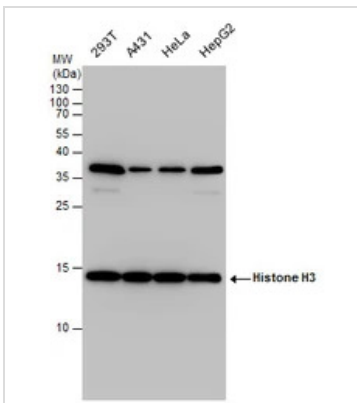
Form	Liquid
Buffer	PBS, 1% BSA, 20% Glycerol
Preservative	0.01% Thimerosal
Storage	Store as concentrated solution. Centrifuge briefly prior to opening vial. For short-term storage (1-2 weeks), store at 4°C. For long-term storage, aliquot and store at -20°C or below. Avoid multiple freeze-thaw cycles.
Concentration	1 mg/ml (Please refer to the vial label for the specific concentration.)
Immunogen	Carrier-protein conjugated synthetic peptide encompassing a sequence within the N-terminus region of human Histone H3. The exact sequence is proprietary.
Purification	Purified by antigen-affinity chromatography.
Conjugation	Unconjugated
Note	For laboratory research use only. Not for any clinical, therapeutic, or diagnostic use in humans or animals. Not for animal or human consumption. Purchasers shall not, and agree not to enable third parties to, analyze, copy, reverse engineer or otherwise attempt to determine the structure or sequence of the product.



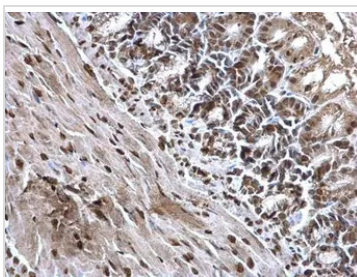
For full product information, images and publications, please visit our [website](#).

DATA IMAGES

GTx129546 WB Image

Whole cell extract (30 µg) was separated by 15% SDS-PAGE, and the membrane was blotted with Histone H3 antibody (GTx129546) diluted at 1:1000. The HRP-conjugated anti-rabbit IgG antibody (GTx213110-01) was used to detect the primary antibody.


GTx129546 WB Image

Histone H3 antibody detects Histone H3 protein by western blot analysis. Various whole cell extracts (30 µg) were separated by 15% SDS-PAGE, and the membrane was blotted with Histone H3 antibody (GTx129546) diluted by 1:1000.

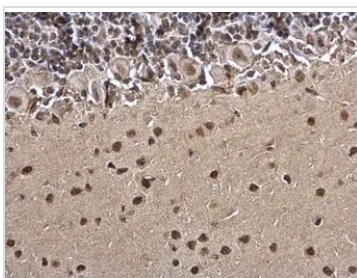

GTx129546 IHC-P Image

Histone H3 antibody detects Histone H3 protein at nucleus on mouse lung by immunohistochemical analysis.

Sample: Paraffin-embedded mouse lung.

Histone H3 antibody (GTx129546) dilution: 1:500.

Antigen Retrieval: Trilogy™ (EDTA based, pH 8.0) buffer, 15min


GTx129546 IHC-P Image

Histone H3 antibody detects Histone H3 protein at nucleus on rat hind brain by immunohistochemical analysis.

Sample: Paraffin-embedded rat hind brain.

Histone H3 antibody (GTx129546) dilution: 1:500.

Antigen Retrieval: Trilogy™ (EDTA based, pH 8.0) buffer, 15min



For full product information, images and publications, please visit our [website](https://www.genetex.com).