

Histone H4 antibody

Cat. No. GTX129560

Host	Rabbit
Clonality	Polyclonal
Isotype	IgG
Application	WB, ICC/IF, IHC-P
Reactivity	Human, Mouse, Rat, Zebrafish

Reference (3)

Package

100 µl, 25 µl

APPLICATION

Application Note

*Optimal dilutions/concentrations should be determined by the researcher.

Suggested dilution	Recommended dilution
WB	1:500-1:10000
ICC/IF	1:100-1:5000
IHC-P	1:100-1:1000

Not tested in other applications.

PROPERTIES

Form	Liquid
Buffer	PBS, 20% Glycerol
Preservative	0.025% ProClin 300
Storage	Store as concentrated solution. Centrifuge briefly prior to opening vial. For short-term storage (1-2 weeks), store at 4°C. For long-term storage, aliquot and store at -20°C or below. Avoid multiple freeze-thaw cycles.
Concentration	1.56 mg/ml (Please refer to the vial label for the specific concentration.)
Immunogen	Carrier-protein conjugated synthetic peptide encompassing a sequence within the N-terminus region of human Histone H4. The exact sequence is proprietary.
Purification	Purified by antigen-affinity chromatography.
Conjugation	Unconjugated

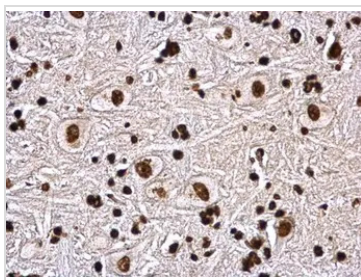
Note

For laboratory research use only. Not for any clinical, therapeutic, or diagnostic use in humans or animals. Not for animal or human consumption.

Purchasers shall not, and agree not to enable third parties to, analyze, copy, reverse engineer or otherwise attempt to determine the structure or sequence of the product.



For full product information, images and publications, please visit our [website](#).

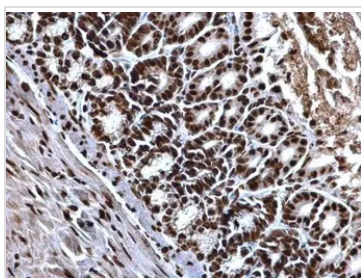
DATA IMAGES

GTx129560 IHC-P Image

Histone H4 antibody detects Histone H4 protein at nucleus on rat brain stem by immunohistochemical analysis.

Sample: Paraffin-embedded rat brain stem.

Histone H4 antibody (GTx129560) dilution: 1:500.

Antigen Retrieval: Trilogy™ (EDTA based, pH 8.0) buffer, 15min

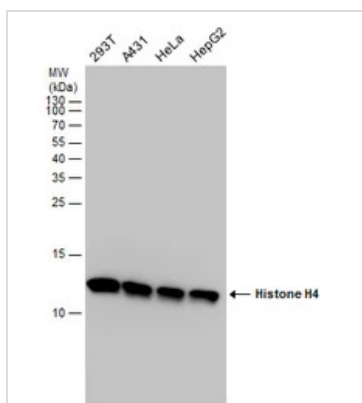

GTx129560 IHC-P Image

Histone H4 antibody detects Histone H4 protein at nucleus on mouse fore brain by immunohistochemical analysis.

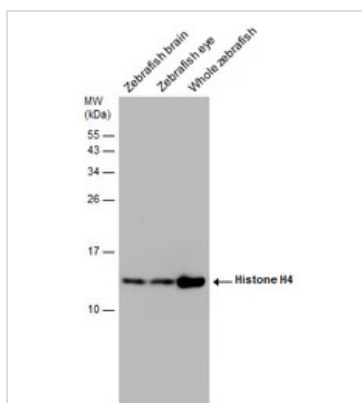
Sample: Paraffin-embedded mouse fore brain.

Histone H4 antibody (GTx129560) dilution: 1:500.

Antigen Retrieval: Trilogy™ (EDTA based, pH 8.0) buffer, 15min


GTx129560 WB Image

Histone H4 antibody detects Histone H4 protein by western blot analysis. Various whole cell extracts (30 µg) were separated by 15% SDS-PAGE, and the membrane was blotted with Histone H4 antibody (GTx129560) diluted at a dilution of 1:5000.


GTx129560 WB Image

Various tissue extracts (30 µg) were separated by 15% SDS-PAGE, and the membrane was blotted with Histone H4 antibody (GTx129560) diluted at 1:1000.



For full product information, images and publications, please visit our [website](https://www.genetex.com).