

Histone H4 antibody

Cat. No. GTX129561

Host	Rabbit
Clonality	Polyclonal
Isotype	IgG
Application	WB, ICC/IF, IHC-P
Reactivity	Human, Mouse, Drosophila

 Review (1)Package
100 µl, 25 µl

APPLICATION

Application Note

*Optimal dilutions/concentrations should be determined by the researcher.

Suggested dilution	Recommended dilution
WB	1:10000
ICC/IF	Assay dependent
IHC-P	Assay dependent

Not tested in other applications.

PROPERTIES

Form	Liquid
Buffer	PBS, 1% BSA, 20% Glycerol
Preservative	0.01% Thimerosal
Storage	Store as concentrated solution. Centrifuge briefly prior to opening vial. For short-term storage (1-2 weeks), store at 4°C. For long-term storage, aliquot and store at -20°C or below. Avoid multiple freeze-thaw cycles.
Concentration	1 mg/ml (Please refer to the vial label for the specific concentration.)
Immunogen	Carrier-protein conjugated synthetic peptide encompassing a sequence within the N-terminus region of human Histone H4. The exact sequence is proprietary.
Purification	Purified by antigen-affinity chromatography.
Conjugation	Unconjugated

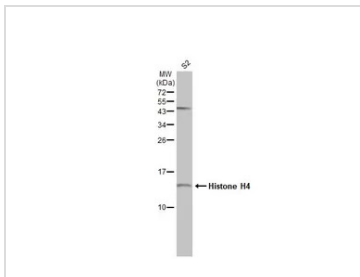
Note

For laboratory research use only. Not for any clinical, therapeutic, or diagnostic use in humans or animals. Not for animal or human consumption.

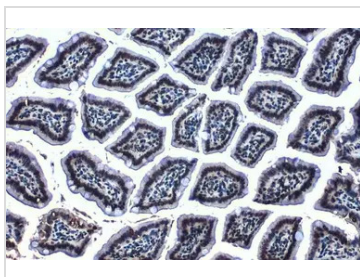
Purchasers shall not, and agree not to enable third parties to, analyze, copy, reverse engineer or otherwise attempt to determine the structure or sequence of the product.



For full product information, images and publications, please visit our [website](#).

DATA IMAGES

GTx129561 WB Image

Whole cell extract (30 μ g) was separated by 15% SDS-PAGE, and the membrane was blotted with Histone H4 antibody (GTx129561) diluted at 1:1000. The HRP-conjugated anti-rabbit IgG antibody (GTx213110-01) was used to detect the primary antibody.

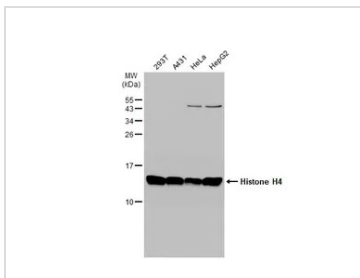

GTx129561 IHC-P Image

Histone H4 antibody detects Histone H4 protein at nucleus by immunohistochemical analysis.

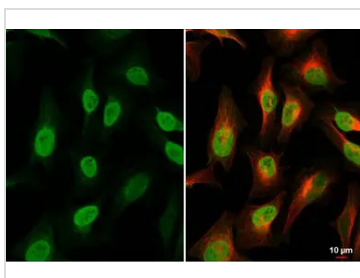
Sample: Paraffin-embedded mouse intestine.

Histone H4 stained by Histone H4 antibody (GTx129561) diluted at 1:500.

Antigen Retrieval: Citrate buffer, pH 6.0, 15 min


GTx129561 WB Image

Various whole cell extracts (30 μ g) were separated by 15% SDS-PAGE, and the membrane was blotted with Histone H4 antibody (GTx129561) diluted at 1:10000. The HRP-conjugated anti-rabbit IgG antibody (GTx213110-01) was used to detect the primary antibody.

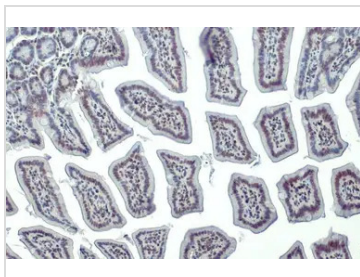

GTx129561 ICC/IF Image

Histone H4 antibody detects Histone H4 protein at cytoplasm and nucleus by immunofluorescent analysis.

Sample: HeLa cells were fixed in 4% paraformaldehyde at RT for 15 min.

Green: Histone H4 stained by Histone H4 antibody (GTx129561) diluted at 1:2000.

Red: alpha Tubulin, a cytoskeleton marker, stained by alpha Tubulin antibody [GT114] (GTx628802) diluted at 1:1000.


GTx129561 IHC-P Image

Histone H4 antibody detects Histone H4 protein at nucleus by immunohistochemical analysis.

Sample: Paraffin-embedded mouse intestine.

Histone H4 stained by Histone H4 antibody (GTx129561) diluted at 1:500.

Antigen Retrieval: Citrate buffer, pH 6.0, 15 min



For full product information, images and publications, please visit our [website](https://www.genetex.com).