

S100 beta antibody

Cat. No. GTX129573

Host	Rabbit
Clonality	Polyclonal
Isotype	IgG
Applications	WB, ICC/IF, IHC-P, IHC-Fr
Reactivity	Polyodon spathula, Human, Mouse, Rat, Squirrel

References (19)

★★★★★ Review (2)

Package

100 µl, 25 µl

PRODUCT

Summary

S100B, a member of the S100 family of calcium-binding cytosolic proteins with a predicted molecular weight of 11kDa, is an independent prognostic marker for melanoma. Elevated S100B and lactate dehydrogenase (LDH) levels are clinically useful for the detection of tumor progression and metastasis.

Applications

Application Note

*Optimal dilutions/concentrations should be determined by the researcher.

Suggested dilution	Recommended dilution
WB	1:500-1:3000
ICC/IF	Assay dependent
IHC-P	1:100-1:1000
IHC-Fr	1:100-1:1000

Not tested in other applications.

Calculated MW 11 kDa. ([Note](#))

Properties

Form	Liquid
Buffer	PBS, 1% BSA, 20% Glycerol
Preservative	0.025% ProClin 300
Storage	Store as concentrated solution. Centrifuge briefly prior to opening vial. For short-term storage (1-2 weeks), store at 4°C. For long-term storage, aliquot and store at -20°C or below. Avoid multiple freeze-thaw cycles.
Concentration	0.14 mg/ml (Please refer to the vial label for the specific concentration.)
Immunogen	Full length human S100 beta Recombinant protein.
Purification	Purified by antigen-affinity chromatography.
Conjugation	Unconjugated



For full product information, images and publications, please visit our [website](#).

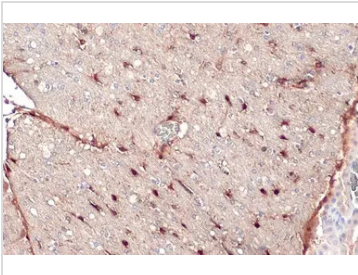
Date 2025 / 09 / 03 Page 1 of 2

For laboratory research use only. Not for any clinical, therapeutic, or diagnostic use in humans or animals. Not for animal or human consumption.

Note

Purchasers shall not, and agree not to enable third parties to, analyze, copy, reverse engineer or otherwise attempt to determine the structure or sequence of the product.

DATA IMAGES



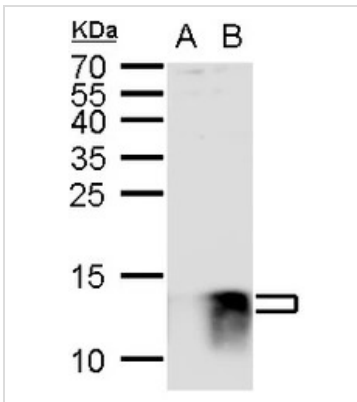
GTX129573 IHC-P Image

S100 beta antibody detects S100 beta protein at cytoplasm by immunohistochemical analysis.

Sample: Paraffin-embedded rat brain.

S100 beta stained by S100 beta antibody (GTX129573) diluted at 1:500.

Antigen Retrieval: Citrate buffer, pH 6.0, 15 min



GTX129573 WB Image

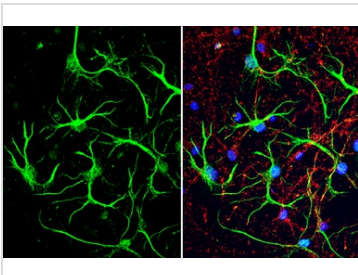
S100B antibody detects S100B protein by western blot analysis.

A. 30 µg 293T whole cell lysate/extract

B. 30 µg whole cell lysate/extract of V5-human S100B-transfected 293T cells

15 % SDS-PAGE

S100B antibody (GTX129573) dilution: 1:1000



GTX129573 ICC/IF Image

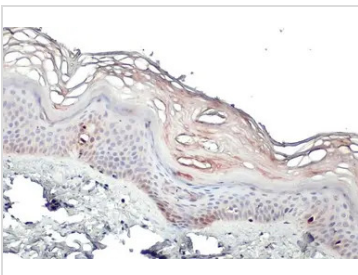
S100 beta antibody detects S100 beta protein at glia cells by immunofluorescent analysis.

Sample: DIV10 rat E18 primary cortical neuron and glia cells were fixed in 4% paraformaldehyde at RT for 15 min.

Green: S100 beta stained by S100 beta antibody (GTX129573) diluted at 1:500.

Red: Tau, stained by Tau antibody [GT287] (GTX634809) diluted at 1:500.

Blue: Fluoroshield with DAPI (GTX30920).



GTX129573 IHC-P Image

S100 beta antibody detects S100 beta protein at cytoplasm by immunohistochemical analysis.

Sample: Paraffin-embedded human skin.

S100 beta stained by S100 beta antibody (GTX129573) diluted at 1:500.

Antigen Retrieval: Citrate buffer, pH 6.0, 15 min



For full product information, images and publications, please visit our [website](#).