

## S100 beta antibody

Cat. No. GTX129573

Host	Rabbit
Clonality	Polyclonal
Isotype	IgG
Applications	WB, ICC/IF, IHC-P, IHC-Fr
Reactivity	Polyodon spathula, Human, Mouse, Rat, Squirrel

References ( 19 )

★★★★★ Review ( 2 )

Package

100 µl, 25 µl

## PRODUCT

## Summary

S100B, a member of the S100 family of calcium-binding cytosolic proteins with a predicted molecular weight of 11kDa, is an independent prognostic marker for melanoma. Elevated S100B and lactate dehydrogenase (LDH) levels are clinically useful for the detection of tumor progression and metastasis.

## Applications

## Application Note

\*Optimal dilutions/concentrations should be determined by the researcher.

Suggested dilution	Recommended dilution
WB	1:500-1:3000
ICC/IF	Assay dependent
IHC-P	1:100-1:1000
IHC-Fr	1:100-1:1000

Not tested in other applications.

Calculated MW 11 kDa. ( [Note](#) )

## Properties

Form	Liquid
Buffer	PBS, 1% BSA, 20% Glycerol
Preservative	0.025% ProClin 300
Storage	Store as concentrated solution. Centrifuge briefly prior to opening vial. For short-term storage (1-2 weeks), store at 4°C. For long-term storage, aliquot and store at -20°C or below. Avoid multiple freeze-thaw cycles.
Concentration	0.14 mg/ml (Please refer to the vial label for the specific concentration.)
Immunogen	Full length human S100 beta Recombinant protein.
Purification	Purified by antigen-affinity chromatography.
Conjugation	Unconjugated



For full product information, images and publications, please visit our [website](#).

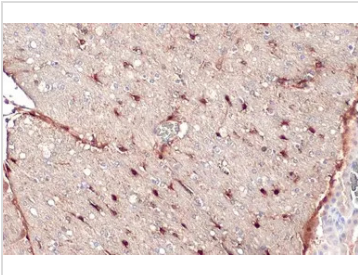
Date 2025 / 05 / 27 Page 1 of 2

For laboratory research use only. Not for any clinical, therapeutic, or diagnostic use in humans or animals. Not for animal or human consumption.

## Note

Purchasers shall not, and agree not to enable third parties to, analyze, copy, reverse engineer or otherwise attempt to determine the structure or sequence of the product.

## DATA IMAGES



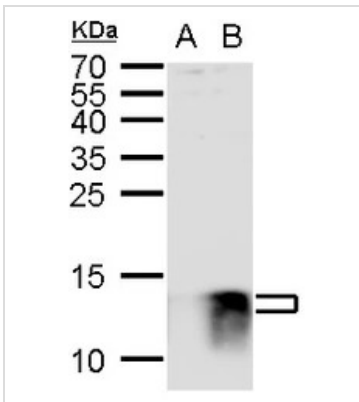
### GTX129573 IHC-P Image

S100 beta antibody detects S100 beta protein at cytoplasm by immunohistochemical analysis.

Sample: Paraffin-embedded rat brain.

S100 beta stained by S100 beta antibody (GTX129573) diluted at 1:500.

Antigen Retrieval: Citrate buffer, pH 6.0, 15 min



### GTX129573 WB Image

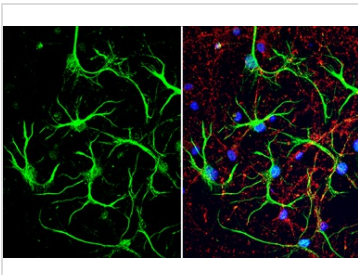
S100B antibody detects S100B protein by western blot analysis.

A. 30 µg 293T whole cell lysate/extract

B. 30 µg whole cell lysate/extract of V5-human S100B-transfected 293T cells

15 % SDS-PAGE

S100B antibody (GTX129573) dilution: 1:1000



### GTX129573 ICC/IF Image

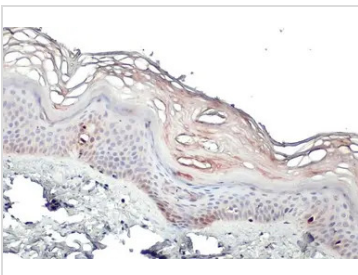
S100 beta antibody detects S100 beta protein at glia cells by immunofluorescent analysis.

Sample: DIV10 rat E18 primary cortical neuron and glia cells were fixed in 4% paraformaldehyde at RT for 15 min.

Green: S100 beta stained by S100 beta antibody (GTX129573) diluted at 1:500.

Red: Tau, stained by Tau antibody [GT287] (GTX634809) diluted at 1:500.

Blue: Fluoroshield with DAPI (GTX30920).



### GTX129573 IHC-P Image

S100 beta antibody detects S100 beta protein at cytoplasm by immunohistochemical analysis.

Sample: Paraffin-embedded human skin.

S100 beta stained by S100 beta antibody (GTX129573) diluted at 1:500.

Antigen Retrieval: Citrate buffer, pH 6.0, 15 min



For full product information, images and publications, please visit our [website](https://www.genetex.com).