

## GPR81 antibody

**Cat. No. GTX12960**

<b>Host</b>	Rabbit
<b>Clonality</b>	Polyclonal
<b>Isotype</b>	IgG
<b>Applications</b>	IHC-P
<b>Reactivity</b>	Human, Rat, Rabbit, Dog, Hamster, Monkey, Bat

**Package**  
25 µg

## Applications

**Application Note**

\*Optimal dilutions/concentrations should be determined by the researcher.

Suggested dilution	Recommended dilution
IHC-P	3 µg/ml

Not tested in other applications.

## Properties

<b>Form</b>	Liquid
<b>Buffer</b>	PBS
<b>Preservative</b>	0.1% Sodium azide
<b>Storage</b>	Store as concentrated solution. Centrifuge briefly prior to opening vial. For short-term storage (1-2 weeks), store at 4°C. For long-term storage, aliquot and store at -20°C or below. Avoid multiple freeze-thaw cycles.
<b>Concentration</b>	1 mg/ml (Please refer to the vial label for the specific concentration.)
<b>Immunogen</b>	Synthetic 16 amino acid peptide from 2nd extracellular domain of human GPR81.
<b>Purification</b>	Purified by affinity chromatography
<b>Conjugation</b>	Unconjugated

**Note**

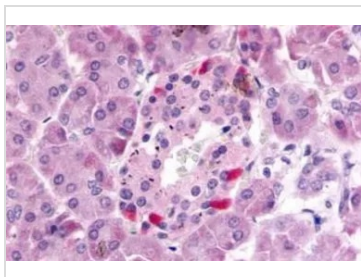
For laboratory research use only. Not for any clinical, therapeutic, or diagnostic use in humans or animals. Not for animal or human consumption.

Purchasers shall not, and agree not to enable third parties to, analyze, copy, reverse engineer or otherwise attempt to determine the structure or sequence of the product.

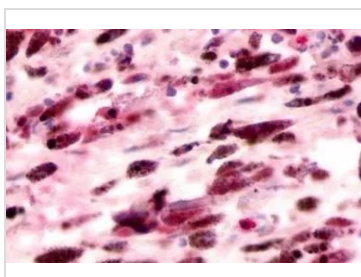


For full product information, images and publications, please visit our [website](#).

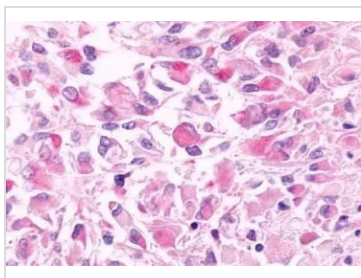
## DATA IMAGES

**GTX12960 IHC-P Image**

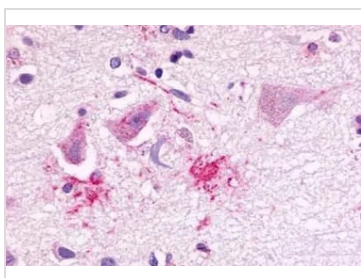
IHC-P analysis of human pancreas islet of langerhans tissue using GTX12960 GPR81 antibody.  
Antigen retrieval : Heat-induced antigen retrieval

**GTX12960 IHC-P Image**

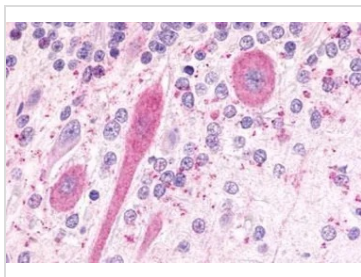
IHC-P analysis of human skin, melanoma tissue using GTX12960 GPR81 antibody.  
Antigen retrieval : Heat-induced antigen retrieval

**GTX12960 IHC-P Image**

IHC-P analysis of brain, glioblastoma tissue using GTX12960 GPR81 antibody.

**GTX12960 IHC-P Image**

IHC-P analysis of brain, alzheimer's, neurons and senile plaque tissue using GTX12960 GPR81 antibody.

**GTX12960 IHC-P Image**

IHC-P analysis of brain, cerebellum, purkinje cell layer tissue using GTX12960 GPR81 antibody.



For full product information, images and publications, please visit our [website](#).