

Timeless antibody

Cat. No. GTX129604

Host	Rabbit
Clonality	Polyclonal
Isotype	IgG
Application	WB, ICC/IF, IP
Reactivity	Human, Mouse

Reference (1)
 Package
 100 µl, 25 µl

APPLICATION

Application Note

*Optimal dilutions/concentrations should be determined by the researcher.

Suggested dilution	Recommended dilution
WB	1:500-1:3000
ICC/IF	1:100-1:2000
IP	1:100-1:500

Not tested in other applications.

Calculated MW 139 kDa. ([Note](#))

PROPERTIES

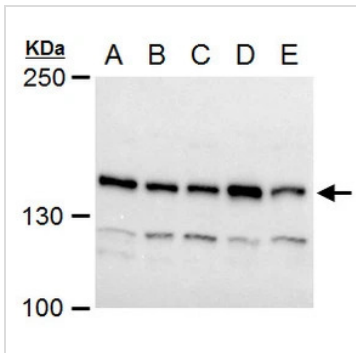
Form	Liquid
Buffer	PBS, 20% Glycerol
Preservative	0.025% ProClin 300
Storage	Store as concentrated solution. Centrifuge briefly prior to opening vial. For short-term storage (1-2 weeks), store at 4°C. For long-term storage, aliquot and store at -20°C or below. Avoid multiple freeze-thaw cycles.
Concentration	1 mg/ml (Please refer to the vial label for the specific concentration.)
Immunogen	Recombinant protein encompassing a sequence within the C-terminus region of human TIMELESS. The exact sequence is proprietary.
Purification	Purified by antigen-affinity chromatography.
Conjugation	Unconjugated

Note For laboratory research use only. Not for any clinical, therapeutic, or diagnostic use in humans or animals. Not for animal or human consumption.

Purchasers shall not, and agree not to enable third parties to, analyze, copy, reverse engineer or otherwise attempt to determine the structure or sequence of the product.



For full product information, images and publications, please visit our [website](#).

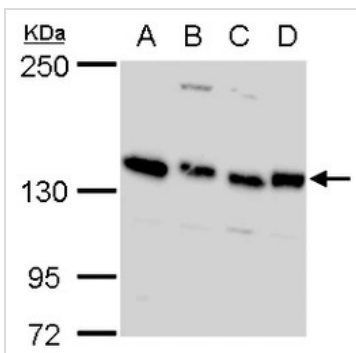
DATA IMAGES

GTx129604 WB Image

TIMELESS antibody detects TIMELESS protein by western blot analysis.

- A. 30 μ g Neuro2A whole cell extract
- B. 30 μ g C8D30 whole cell extract
- C. 30 μ g NIH-3T3 whole cell extract
- D. 30 μ g Raw 264.7 whole cell extract
- E. 30 μ g C2C12 whole cell extract

5 % SDS-PAGE

TIMELESS antibody (GTx129604) dilution: 1:1000

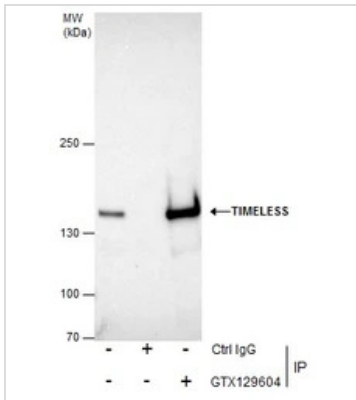

GTx129604 WB Image

TIMELESS antibody detects TIMELESS protein by western blot analysis.

- A. 30 μ g 293T whole cell lysate/extract
- B. 30 μ g A431 whole cell lysate/extract
- C. 30 μ g HeLa whole cell lysate/extract
- D. 30 μ g HepG2 whole cell lysate/extract

5 % SDS-PAGE

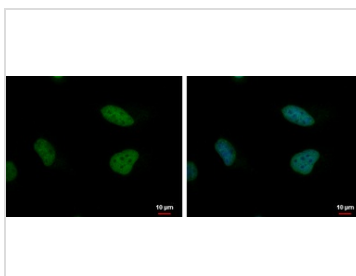
TIMELESS antibody (GTx129604) dilution: 1:1000


GTx129604 IP Image

Immunoprecipitation of TIMELESS protein from 293T whole cell extracts using 5 μ g of TIMELESS antibody (GTx129604).

Western blot analysis was performed using TIMELESS antibody (GTx129604).

EasyBlot anti-Rabbit IgG (GTx221666-01) was used as a secondary reagent.


GTx129604 ICC/IF Image

TIMELESS antibody detects TIMELESS protein at nucleus by immunofluorescent analysis.

Sample: HeLa cells were fixed in 4% paraformaldehyde at RT for 15 min.

Green: TIMELESS protein stained by TIMELESS antibody (GTx129604) diluted at 1:2000.

Blue: Hoechst 33342 staining.



For full product information, images and publications, please visit our [website](https://www.genetex.com).